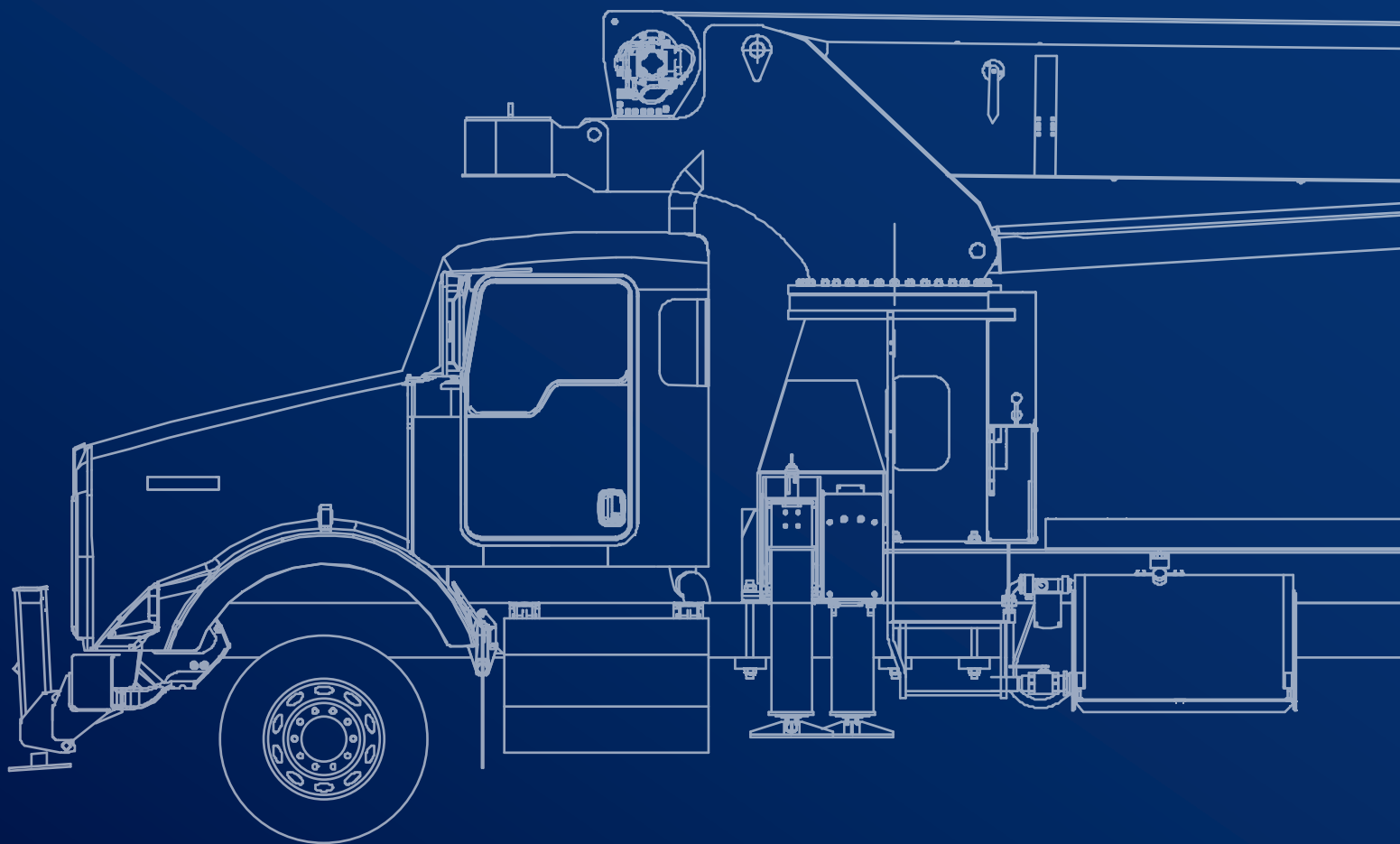


# CM350

## SERIES PRODUCT GUIDE

35 TON (32 MT) TELESCOPIC CRANE

***Manitex***





November 2025. Unless otherwise specified, all information in this brochure refers to a standard crane equipment, and it is intended as general information only. No liability is assumed. Errors reserved. Product specifications and prices are subject to changes without notice. The photographs and/or drawings in this brochure are for illustrative purposes only. For correct and safe crane operation, the original operating manual and lifting capacity charts are essential. Failure to follow the corresponding Operator's Manual when using our equipment or failure to otherwise act responsibly may result in property damage, serious injury or death. The sole warranty applicable with respect to our equipment is the standard warranty as per general terms and conditions of sales and service (ask your local Tadano dealer for details), and Tadano makes no other warranty, express or implied. All rights reserved. Any use of the trademarks, logos, brand names and model names used herein is prohibited.

© Tadano Ltd. 2025

# Contents

Chassis Data .....	6-7
Outrigger Extension .....	8
Area of Operation.....	9
Reeving Diagram .....	9
35100C Load Chart: Main Boom and Jib .....	12
35100C Boom Diagram.....	13
35124C Load Chart: Main Boom and Jib .....	14
35124C Boom Diagram.....	15
LMI Operating Codes .....	16
Technical Description .....	18-19
Technical Description – Options .....	20-21

# Key

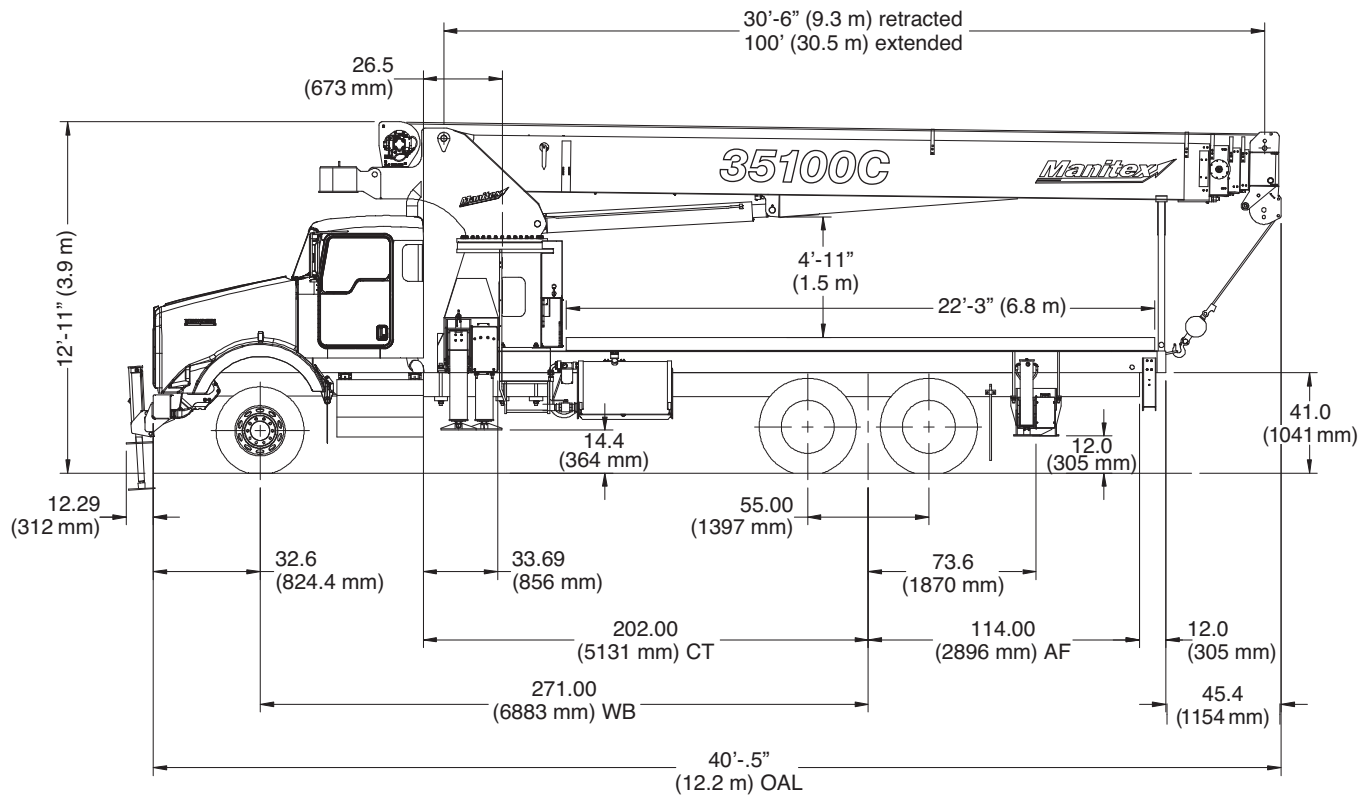
	Operator aids		Radio remote control
	Cab		Hook block
	Heating / Air conditioning		Distance from hook to head sheave pin
	Controls		Hook and ball
	Hoist speed		Hydraulics
	1 - Main hoist 2 - Auxiliary winch 3 - Recovery winch		Boom elevation angle
	Rope length		Max. boom length with extension
	Rope – Standard / optional		Boom with extension retracted
	Rope diameter		Boom angle
	Permissible line pull		Telescoping mode
	Maximum line pull		Working radius
	Slewing / Allowable slewing range		Boom length
	Slewing gears		Hydraulic actuated boom
	Slewing brake		Full power mechanical synchronized
	Outriggers / Lifting on outriggers		Boom head / Hook block dimension
	2-person man basket		Main boom with auxiliary head
	Counterweight		Tip height

# CM 350



# 35100C Chassis Data

## Dimensions



## Chassis Data

Model	35100C
Wheelbase (WB)	271 in. (6,883 mm)
Cab to tandem (CT)	202 in. (5,131 mm)
After frame (AF)	114 in. (2,896 mm)
Nominal frame width	34 in. (864 mm)
Frame section modulus at 180° / 360° area of operation*	30 in <sup>3</sup> (491.6 cm <sup>3</sup> ) 125,000 psi · 861,875 kPa

\* Frame selection modulus at 360° area of operation requires front bumper stabilizer.

## Truck Axle Weight

Front axle gross weight rating	20,000 lbs (9,072 kg)
Rear axle gross weight rating	40,000 lbs (18,144 kg)
Min. truck axle weight – Front**	8,450 lbs (3,833 kg)
Min. truck axle weight – Rear**	8,300 lbs (3,765 kg)

\* Minimum chassis weight is required to meet 85% stability requirements.  
Chassis data is general – not for engineering. Some dimensions depend on truck selection.

## Crane Weight

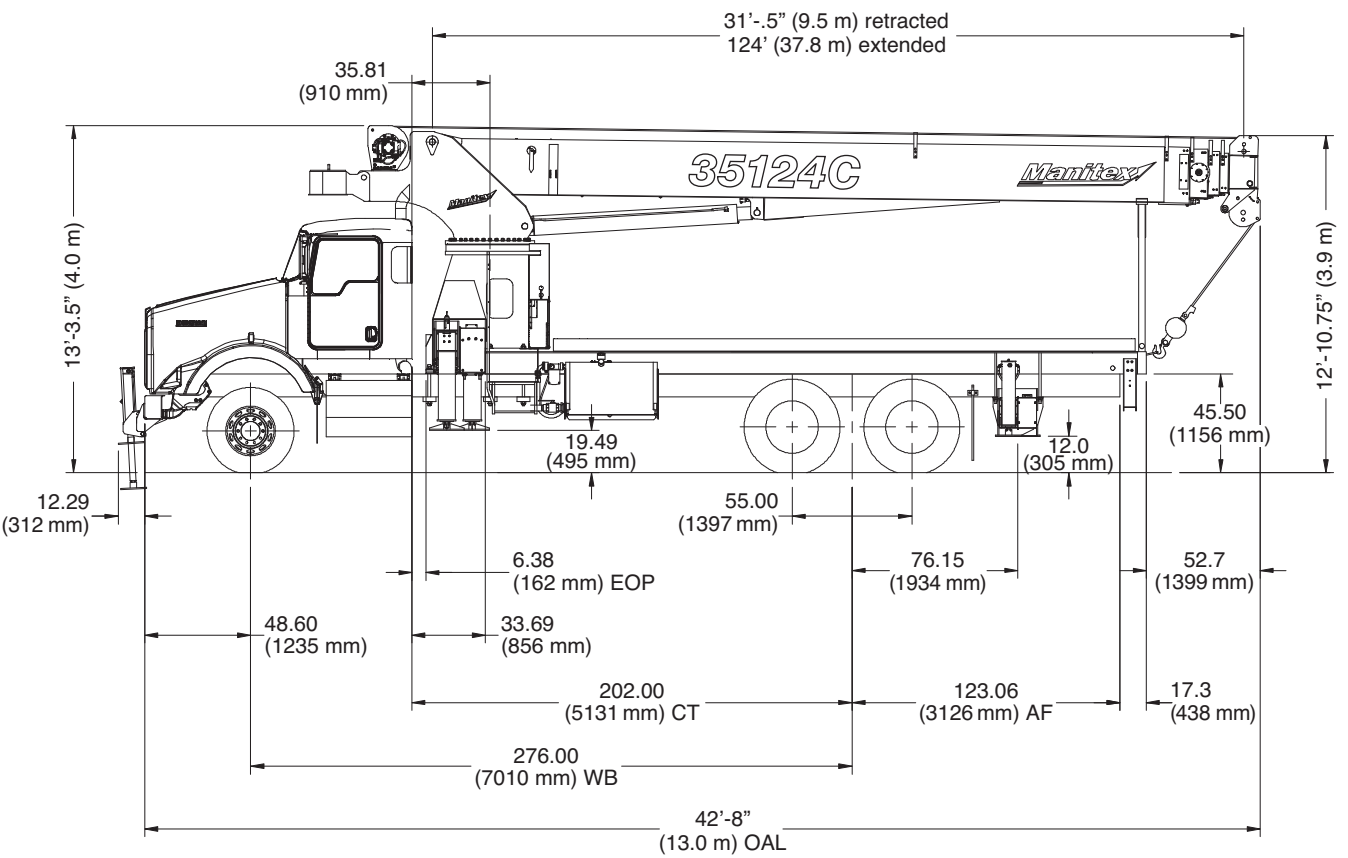
Model	35100C
Total crane (standard)	29,580 lbs (13,417 kg)
22 ft (6.7 m) Flatbed weight	1,980 lbs (898 kg)

Notes:  
Additional axles required for federal bridge legal configuration – consult Manitex.  
Manitex highly recommends addition of a front stabilizer and may be required on some installations – consult Manitex.

Data published herein is intended as a guide only. Crane operation is subject to machine specific load charts and information.

# 35124C Chassis Data

## Dimensions



Chassis Data	
Model	35124C
Wheelbase (WB)	276 in. (7,010 mm)
Cab to tandem (CT)	202 in. (5,131 mm)
After frame (AF)	123.06 in. (3,126 mm)
Nominal frame width	34 in. (864 mm)
Frame section modulus at 180° / 360° area of operation*	30 in <sup>3</sup> (491.6 cm <sup>3</sup> ) 125,000 psi · 861,875 kPa

\* Frame selection modulus at 360° area of operation requires front bumper stabilizer.

Truck Axle Weight	
Front axle gross weight rating	20,000 lbs (9,072 kg)
Rear axle gross weight rating	40,000 lbs (18,144 kg)
Min. truck axle weight – Front**	8,450 lbs (3,833 kg)
Min. truck axle weight – Rear**	8,300 lbs (3,765 kg)

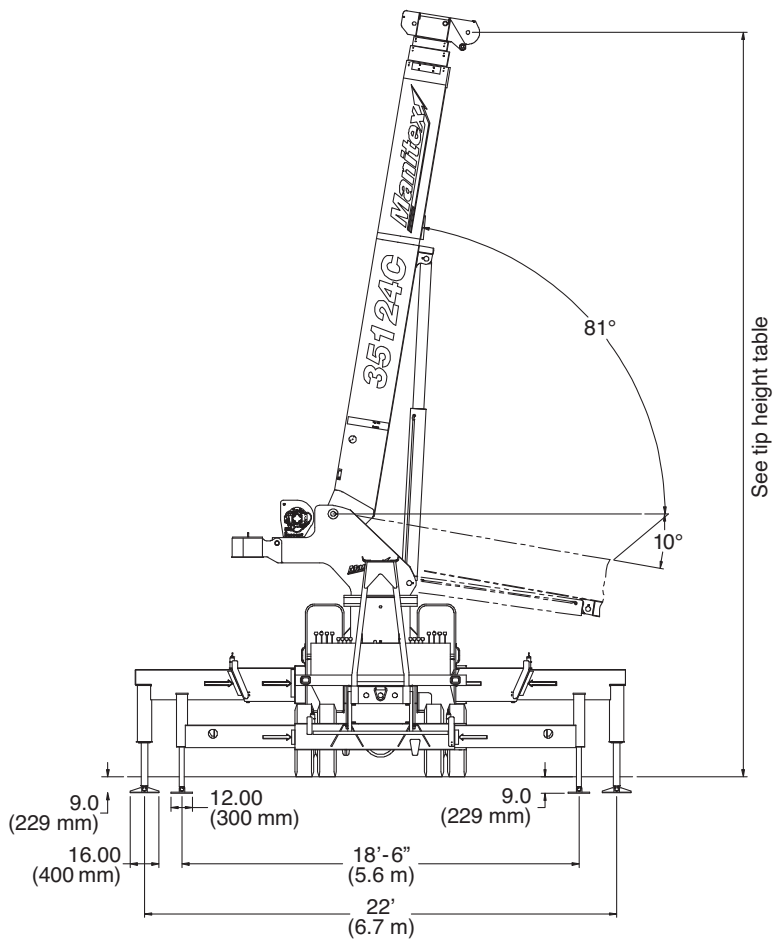
Crane Weight	
Model	35124C
Total crane (standard)	32,260 lbs. (14,633 kg)
22 ft (6.7 m) Flatbed weight	1,980 lbs (898 kg)

Notes:  
Additional axles required for federal bridge legal configuration – consult Manitex.  
Manitex highly recommends addition of a front stabilizer and may be required on some installations – consult Manitex.

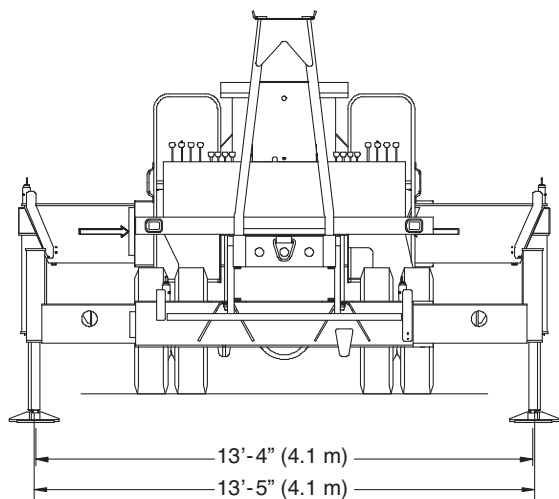
Data published herein is intended as a guide only. Crane operation is subject to machine specific load charts and information.

# Outrigger Extension

## Outrigger Stabilizer Combination – Fully Extended (optional)



## Outrigger Stabilizer Combination – Intermediate Extended

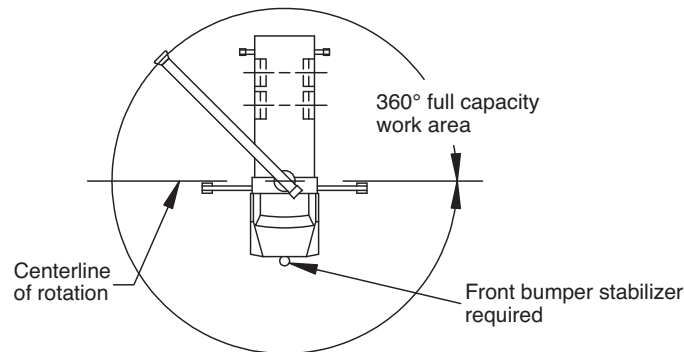


Data published herein is intended as a guide only. Crane operation is subject to machine specific load charts and information.



# Area of Operation · Reeving Diagram

## Area of Operation



## Deductions from rated loads for load handling devices supplied by Manitex

Auxiliary block	50 lbs (22.7 kg)
Auxiliary sheave	50 lbs (22.7 kg)
Overhaul ball	See overhaul ball mfr. nameplate
Load blocks	See block mfr. nameplate
Hose reel	260 lbs (117.9 kg)
Swing-around jib	See load chart

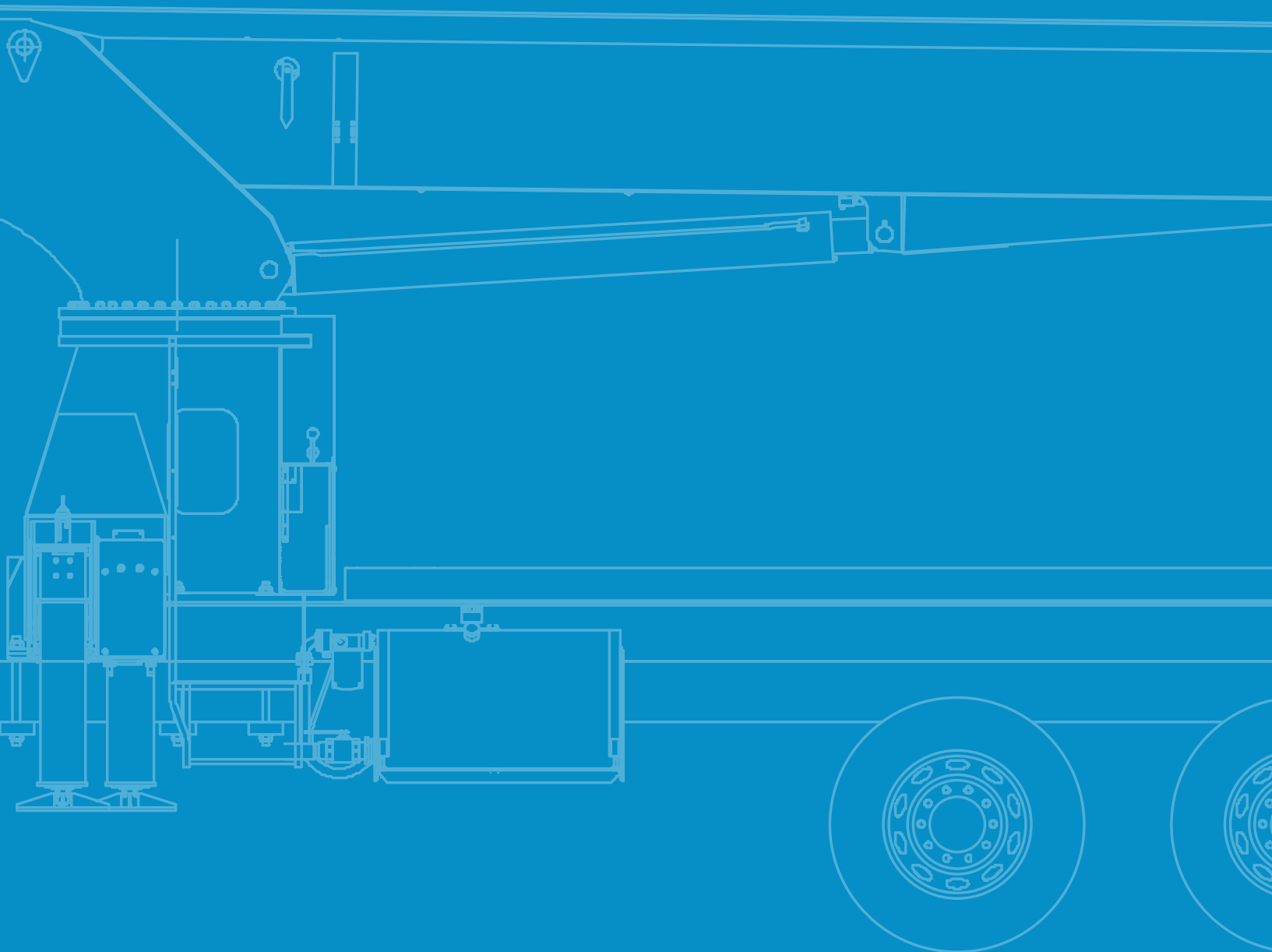
**WARNING:** Lifting off the main boom point while the jib is erected is not intended nor approved.

## Reeving Diagram

Allowable Line Pull								<b>WARNING</b>  <b>Anti-Two-Block System must be in good operating condition before operating crane.</b>  <b>Refer to the owner's manual.</b>  <b>Keep at least 3 wraps of load line on the drum at all times.</b>
1 part line	2 part line	3 part line	4 part line	5 part line	6 part line	7 part line	8 part line	
9,080 lbs	18,160 lbs	27,240 lbs	36,320 lbs	45,400 lbs	54,480 lbs	63,560 lbs	70,000 lbs	5/8" rot resistant (5.0 : 1 SF) 45,400 lbs min. breaking strength
9,500 lbs	19,000 lbs	28,500 lbs	38,000 lbs	47,500 lbs	57,000 lbs	66,500 lbs	70,000 lbs	5/8" 6 x 25 IWRC (3.5 : 1 SF) 33,250 lbs min. breaking strength









## Notes

**CM 350**



# 35100C Load Chart

## Main Boom Jib

 30.5 ft – 100 ft – 4 section Jib 30.5 ft – 55 ft			 360° non-continuous			 22 ft (6.7m) Outriggers			18.4 ft (5.6 m) Stabilizers														
															Fixed Jib			Telescopic Jib					
30.5 ft			52 ft (A)			68 ft (B)			84 ft (C)			100 ft (D)			30.5 ft			30.5 ft			55 ft		
ft	°	lbs	°	lbs	°	lbs	°	lbs	°	lbs	°	lbs	ft	°	lbs	°	lbs	°	lbs	°	lbs		
6	80	70,000	-	-	-	-	-	-	-	-	-	-	6	-	-	-	-	-	-	-	-		
8	76	53,500	-	-	-	-	-	-	-	-	-	-	8	-	-	-	-	-	-	-	-		
10	72	45,670	-	-	-	-	-	-	-	-	-	-	10	-	-	-	-	-	-	-	-		
12	68	39,830	78	31,500	-	-	-	-	-	-	-	-	12	-	-	-	-	-	-	-	-		
15	61	33,660	75	30,330	79	28,500	-	-	-	-	-	-	15	-	-	-	-	-	-	-	-		
20	49	24,380	69	23,790	75	22,580	79	21,780	80	14,000	-	-	20	-	-	-	-	-	-	-	-		
25	33	18,310	62	18,810	70	18,470	75	17,690	78	13,500	-	-	25	-	-	-	-	-	-	-	-		
30	-	-	56	14,700	65	14,850	71	14,760	75	13,000	-	-	30	79	7,300	79	7,000	-	-	-	-		
35	-	-	48	11,350	60	11,530	67	11,630	72	11,170	-	-	35	77	7,100	77	6,800	80	4,000	-	-		
40	-	-	40	8,910	55	9,070	63	9,170	69	9,240	-	-	40	75	6,800	75	6,670	78	3,850	-	-		
45	-	-	29	7,120	50	7,290	59	7,380	66	7,440	-	-	45	73	6,450	73	6,060	76	3,700	-	-		
50	-	-	-	-	43	5,930	55	6,020	62	6,080	-	-	50	71	5,900	71	5,510	74	3,550	-	-		
55	-	-	-	-	36	4,860	51	4,950	59	5,000	-	-	55	68	5,200	68	4,790	72	3,400	-	-		
60	-	-	-	-	27	3,990	46	4,080	55	4,140	-	-	60	65	4,330	65	3,920	70	3,250	-	-		
65	-	-	-	-	12	3,280	40	3,370	51	3,430	-	-	65	63	3,610	63	3,200	68	3,040	-	-		
70	-	-	-	-	-	-	34	2,770	47	2,830	-	-	70	60	3,010	60	2,600	66	2,830	-	-		
75	-	-	-	-	-	-	27	2,270	43	2,320	-	-	75	57	2,500	57	2,090	64	2,640	-	-		
80	-	-	-	-	-	-	15	1,830	38	1,880	-	-	80	55	2,060	55	1,650	62	2,310	-	-		
85	-	-	-	-	-	-	-	-	33	1,500	-	-	85	52	1,680	52	1,260	60	1,920	-	-		
90	-	-	-	-	-	-	-	-	26	1,170	-	-	90	49	1,350	49	930	58	1,580	-	-		
95	-	-	-	-	-	-	-	-	17	870	-	-	95	45	1,050	45	630	55	1,280	-	-		
100	-	-	-	-	-	-	-	-	-	-	-	-	100	42	790	-	-	53	1,010	-	-		
105	-	-	-	-	-	-	-	-	-	-	-	-	105	38	550	-	-	50	770	-	-		
110	-	-	-	-	-	-	-	-	-	-	-	-	110	-	-	-	-	47	560	-	-		

### Deductions from main boom capacities for stowed jibs

SFJ	600 lbs	350 lbs	270 lbs	220 lbs	180 lbs
STJ	900 lbs	530 lbs	400 lbs	330 lbs	290 lbs

SFJ = Stowed fixed jib · STJ = Stowed telescopic jib

↑	Structural
↓	Stability

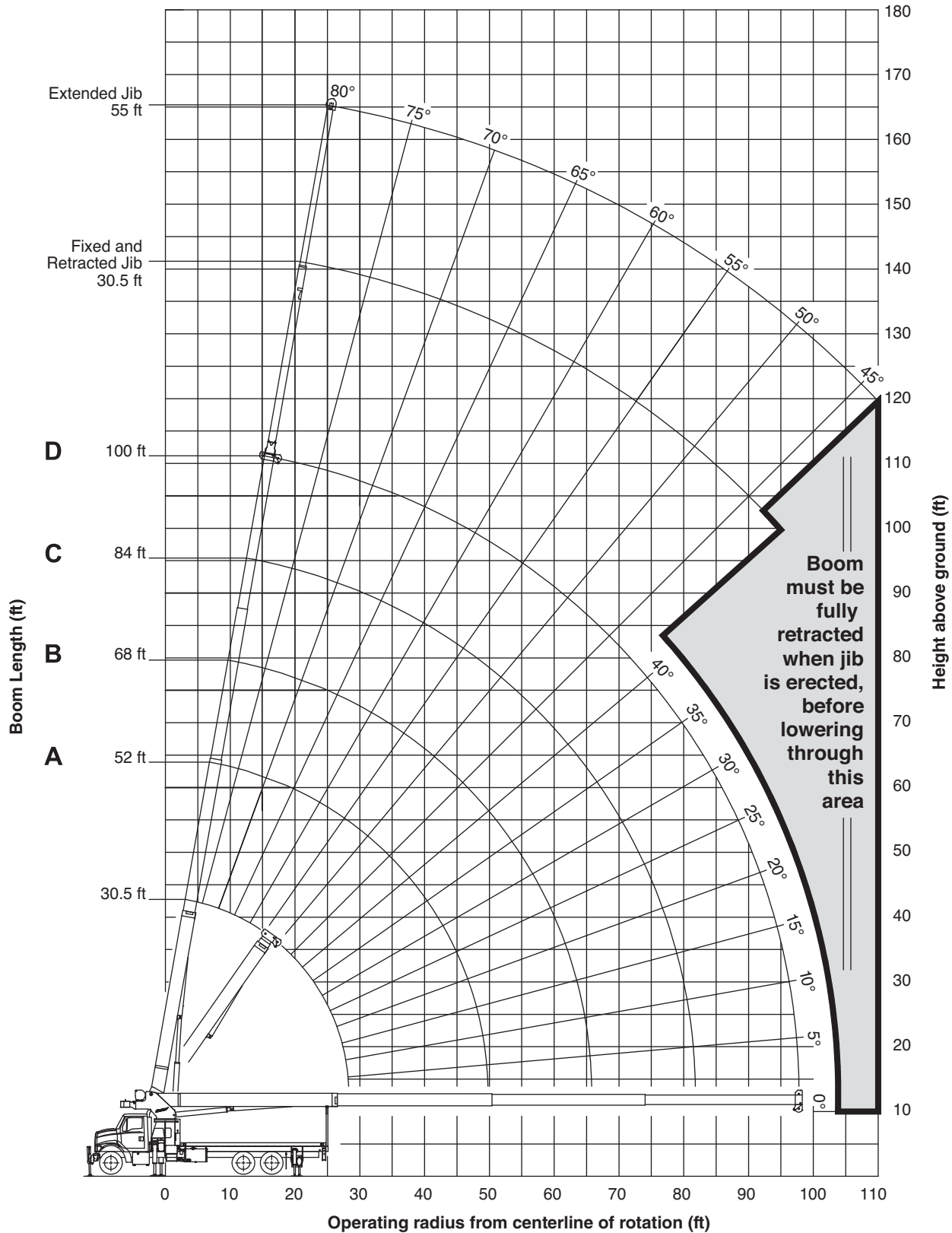
### NOTES:

- All loads rated at 360° pick
- Loads based on crane on fully extended outriggers and stabilizers
- All “on outriggers” loads are based on 85% tipping
- Loads above heavy line are based on structural rating
- Loads below heavy line are based on stability rating

Data published herein is intended as a guide only. Crane operation is subject to machine specific load charts and information.

# 35100C Boom Diagram







## Main Boom Jib



Data published herein is intended as a guide only. Crane operation is subject to machine specific load charts and information.

# 35124C Load Chart

## Main Boom Jib

31 ft – 123.7 ft – 5 section Jib 31 ft							360° non-continuous		22 ft (6.7m) Outriggers		18.4 ft (5.6 m) Stabilizers		
												Fixed Jib	
ft	°	lbs	°	lbs	°	lbs	°	lbs	°	lbs	ft	°	lbs
6	81	70,000	-	-	-	-	-	-	-	-	6	-	-
8	76	53,390	-	-	-	-	-	-	-	-	8	-	-
10	72	45,380	-	-	-	-	-	-	-	-	10	-	-
12	68	39,420	79	25,000	-	-	-	-	-	-	12	-	-
15	61	33,110	76	25,000	81	21,500	-	-	-	-	15	-	-
20	49	23,710	71	22,870	78	19,700	81	14,500	-	-	20	-	-
25	34	17,680	65	18,280	74	17,420	79	13,500	81	8,450	25	-	-
30	-	-	60	14,150	70	14,320	76	12,820	79	8,150	30	81	4,000
35	-	-	53	11,080	66	11,270	73	11,370	76	7,800	35	79	3,850
40	-	-	47	8,590	62	8,770	69	8,870	74	7,280	40	77	3,700
45	-	-	39	6,780	57	6,960	66	7,050	72	6,780	45	75	3,550
50	-	-	29	5,400	52	5,580	63	5,660	69	5,710	50	73	3,400
55	-	-	13	4,320	47	4,490	59	4,570	66	4,620	55	71	3,250
60	-	-	-	-	42	3,620	56	3,700	64	3,740	60	69	3,080
65	-	-	-	-	36	2,890	52	2,970	61	3,020	65	67	2,910
70	-	-	-	-	28	2,290	48	2,370	58	2,410	70	66	2,740
75	-	-	-	-	18	1,770	44	1,850	55	1,900	75	64	2,220
80	-	-	-	-	-	-	39	1,410	52	1,450	80	62	1,770
85	-	-	-	-	-	-	34	1,030	49	1,070	85	60	1,390
90	-	-	-	-	-	-	28	690	45	730	90	57	1,050
95	-	-	-	-	-	-	-	-	-	-	95	55	750

### Deductions from main boom capacities for stowed jibs

SJ	450 lbs	240 lbs	180 lbs	140 lbs	120 lbs
----	---------	---------	---------	---------	---------

SJ = Stowed jib

↑	Structural
↓	Stability

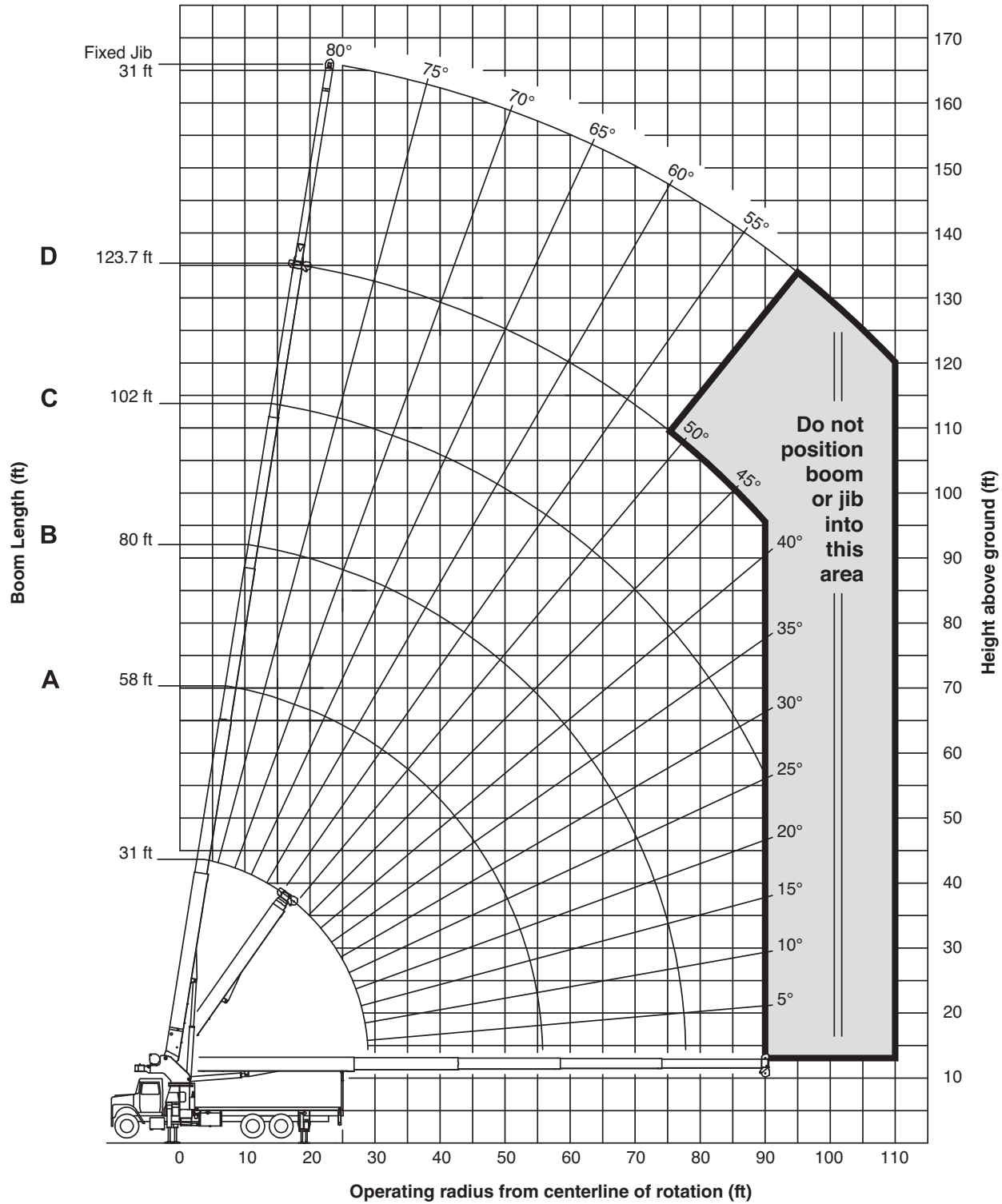
#### NOTES:

- All loads rated at 360° pick
- Loads based on crane on fully extended outriggers and stabilizers
- All “on outriggers” loads are based on 85% tipping
- Loads above heavy line are based on structural rating
- Loads below heavy line are based on stability rating

Data published herein is intended as a guide only. Crane operation is subject to machine specific load charts and information.

# 35124C Boom Diagram

## Main Boom Jib



Data published herein is intended as a guide only. Crane operation is subject to machine specific load charts and information.

# LMI Operating Codes

LMI Operating Codes		
Code	Crane Configuration	Outrigger Configuration
1	Main boom	Fully extended
2	Fixed jib	Fully extended
3	Telescopic jib – Retracted	Fully extended
4	Telescopic jib – Extended	Fully extended
5	Personnel lifting platform on main boom	Fully extended
6	Personnel lifting platform on fixed jib	Fully extended
7	Personnel lifting platform on telescopic jib – Retracted	Fully extended
8	Personnel lifting platform on telescopic jib – Extended	Fully extended
9	Main boom	Intermediate
10	Fixed jib	Intermediate
11	Telescopic jib – Retracted	Intermediate
12	Telescopic jib – Extended	Intermediate

## WARNING

1. The operator must read and understand the owner's manual before operating the crane.
2. Positioning or operation of crane beyond areas shown on these charts is not intended or approved except where specified in owner's manual.
3. Loaded boom angles at specified boom lengths give only an approximation of the operating radius. The boom angle before loading should be greater to account for deflections. Do not exceed the operating radius for rated loads.
4. The operating radius shown in the jib rating chart is for fully extended boom only. When boom is not fully extended, use only loaded boom angle to determine load rating of jib.
5. For boom angles not shown on jib load rating chart, use rating of next lower boom angle.
6. For boom lengths not shown, use rating of next shorter or longer boom length, whichever is less. For radii not shown, use rating of next longer radius.
7. Crane load ratings on outriggers are based on freely suspended loads with the machine leveled and standing on a firm uniform supporting surface. No attempt shall be made to move a load horizontally on the ground in any direction.
8. Practical working loads depend on supporting surface, wind, and other factors affecting stability such as hazardous surroundings, experience of personnel, and proper handling, all of which must be taken into account by the operator.
9. The maximum load which may be telescoped is limited by hydraulic pressure, boom angle, and boom lubrication. It is safe to attempt to telescope any load within the limits of the load rating chart.
10. Lifting off the main boom point while the swing around jib is erected is not intended or approved.
11. 360° area of operation is only valid with the use of a front bumper stabilizer.

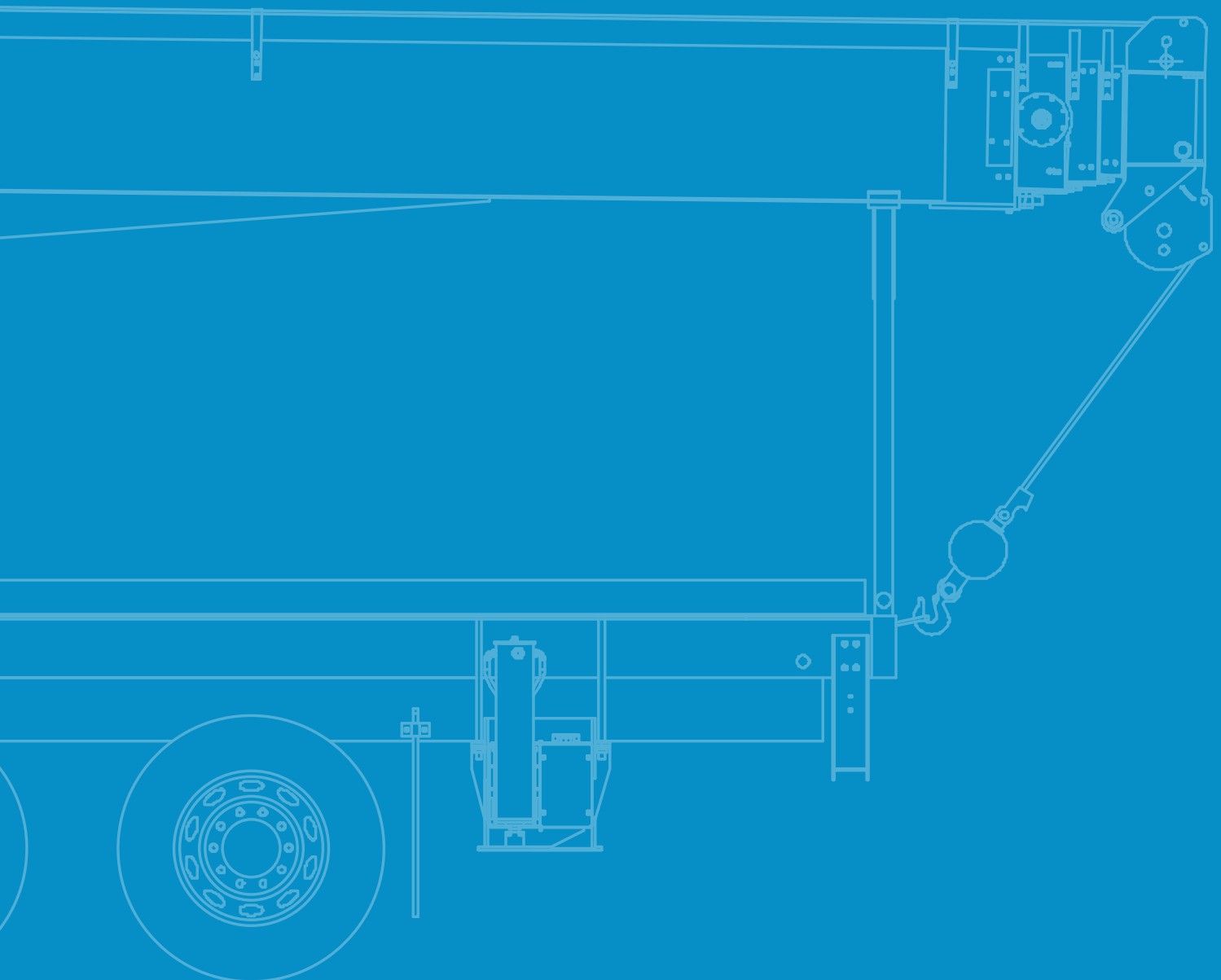
## DEFINITIONS

1. Operating radius is the horizontal distance from the axis of rotation to the center of the vertical hoist line or tackle with load applied.
2. Loaded boom angle as shown in the column head, is the included angle between the horizontal and longitudinal axes of the boom base after lifting rated load at rated radius.

Data published herein is intended as a guide only. Crane operation is subject to machine specific load charts and information.



**CM 350**



# Technical Description

## Boom



Boom length: Proportional boom

- 4-section 100 ft (30.5 m)
- 5-section 124 ft (37.8 m)

2 upper and 3 lower quick reeve boom point

Self lubricating slider pads



35100C:

- Boom max. tip height 111.2 ft (33.9 m)
- Boom min. tip height 100 ft (30.5 m)

35124C:

- Boom max. tip height 133.8 ft (40.8 m)
- Boom min. tip height 124 ft (37.8 m)



Boom angle (min./max.):  
-9° / 80.6°

## Rotation



Ball-bearing swing circle with external gear

Double-reduction planetary gearbox driven by hydraulic motor



Slewing brake:

Spring-applied pressure released parking brake



Slewing speed: 0 - 1.5 rpm

Boom rotation: 372° non-continuous

## Outriggers



Outriggers: Out and Down style

FBS – Front Bumper Stabilizer (optional)

Outriggers fully extended: 22 ft (6.7 m)

Stabilizers fully extended: 18.4 ft (5.6 m)

## Hoist, Rope and Hook



Maximum theoretical line speed:  
453 fpm (138 mpm)



Maximum theoretical bottom-layer line pull:  
14,500 lbs (6,577 kg)



Main winch cable diameter: 0.625 in. (15.9 mm)

rotation resistant



Line length: 380 ft (115.8 m)



Main winch motor:

Bent axis 2-speed hydraulic motor (activated electrically)



Hook and ball:

5 t (4.5 mt) capacity hook with heavy-duty swivel and weight is provided for single line operation

# Technical Description

## Hydraulics



8-bolt direct mounted PTO and SAE B input and SAE BB output

3-section gear pump standard CCW rotation

Hydraulic reservoir capacity:  
115 gallons (435 liter)

Pump sections @ 2000 rpm with 100 psi

- Shaft end pump: 38.4 gpm (145 lpm)
- Center pump: 27.4 gpm (104 lpm)
- Cover end pump: 11.2 gpm (42 lpm)

## Operator Aids



External wired LMI with crane function cut-offs for overload protection

Wired anti-two block system

## Control System



Dual operating stations are equipped with four single-lever crane controls arranged in accordance with ANSI B30.5 standards.

Fully proportional control valves

Each station includes:

- Individual control levers for each outrigger and stabilizer
- Engine start and stop
- Electronic foot throttle
- Signal horn
- Boom angle indicator
- Beverage holder
- Load chart with range diagram and mount for removable LMI display

## Electrical System

State-of-the-art, weather-resistant components throughout

Hermetically sealed enclosure includes power in relays and circuit status LEDs

## Mounting System

Pedestal sub-frame and stabilizers are mounted to chassis by threaded rods and clamp plates

Sub-frame:

Torsion resistant, rigid 4-plate design mounted under crane full length of truck frame

Rear under-ride protection:

Standard on factory mounted cranes

Boom rest:

Heavy-duty fabrication, easily removed

# Technical Description – Options

## Flatbeds

- 22 ft (6.7 m) wood bed
- 22 ft (6.7 m) steel bed
- 22 ft (6.7 m) heavy hauler flatbed 0.1875 in. (4.8 mm) steel

## Jib

- 35100C:
- 1-section fixed jib      30.5 ft (9.3 m)
  - 2-section telescopic jib   30.5 ft (9.3 m) – 55 ft (16.8 m) jib
- 35124C:
- 1-section fixed jib      31.0 ft (9.4 m)



- 35100C:
- Max. tip height with extension:      166.7 ft (50.8 m)
  - Max. tip height with extension retracted:   142.1 ft (43.3 m)



- 35124C:
- Max. tip height with extension:      166.0 ft (50.6 m)
  - Max. tip height with extension retracted:   142.1 ft (43.3 m)

## Hoist, Rope and Hook



- 0.625 in. (15.9 mm) diameter  
6 x 25 EIPS IWRC wire rope

# Technical Description – Options

## Hydraulics



3-section vane pump, CCW or CW

- FBS – Front Bumper Stabilizer
- Hydraulic oil cooler
- Hose reel

## 2-Person Basket



2-person man basket – Aluminum or steel – consult Manitex

- Non-rotating (600 lbs capacity) – Steel
- Rotating quick attached – Aluminum – Main boom only

## Radio Remote



4-function radio remote crane control system

## Tool Boxes and Bulkhead

Tool Boxes

- 24 in. L x 18 in. W x 18 in. H ( 610 mm L x 457 mm W x 457 mm H) – Steel
- 48 in. L x 24 in. W x 24 in. H (1,219 mm L x 610 mm W x 610 mm H) – Aluminium

Bulkhead:

- 24 in. (610 mm)

## Notes

## Notes

[www.tadano.com](http://www.tadano.com)  
[www.manitex.com](http://www.manitex.com)

**Tadano Ltd.**

Kanda Square 18th Floor, 2-2-1 Kanda-Nishikicho, Chiyoda-ku, Tokyo 101-0054, Japan  
Phone: +81-3-6811-7309 (International Division)

**Manitex Inc.**

3000 South Austin Avenue #7544, Georgetown, TX 78626, USA  
Phone: +1 (803) 526-9672



Reaching new heights

