

25 E Series

PICK & CARRY CRANE

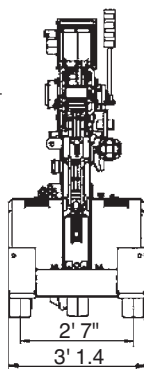
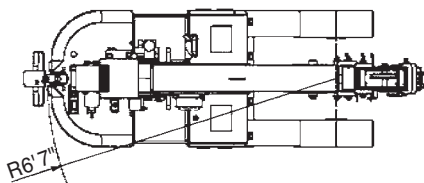
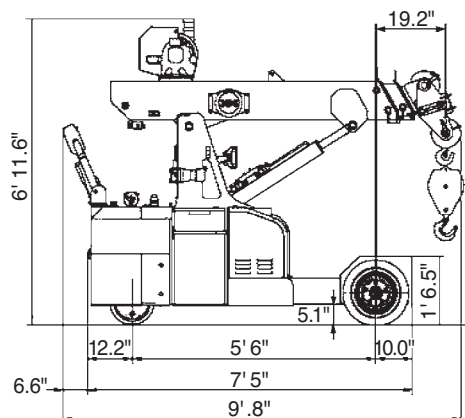
FEATURES

- Max. capacity 4,950 lbs or 5,500 lbs
- Max. boom extension 9'2"
- Max. boom angle 55°
- Min. boom angle -20°
- Conformity 2006/42 CE; 2014/30 CE; 2014/35 CE; 2000/14 CE; EN 13000
- Weight 4,400 lbs or 5,300 lbs

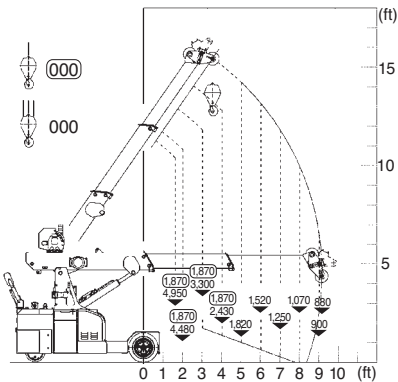


Model	25 E Series
Crane Frame	Three-wheel Pick & Carry design, constructed from high quality steel with a built-in counterweight. Maintaining a compact footprint, without the need for outriggers. Pick & Carry design means ability to move with a load.
Crane Boom	Three section boom; with 2 telescoping sections. Sequential telescoping action using internal dual hydraulic cylinders, fitted with nylon wear pads and adjustable wear pads on the sides of the boom.
Winch	Dual-speed hydraulic winch equipped with 223 ft of high-grade wire rope. 12,000 lbs minimum breaking point.
Boom Control	Hydraulic boom action using a 5 kW 48 V powerful pump motor, controlled by electronic proportional joystick distributors. Hand-held remote control with high speed winch functionality.
Load Monitor	Electronic Load Moment Indicator. New condensation resistant design. LCD display showing lifted load, max. allowed load, tilting percentage, operating radius, angle, boom telescope length, and more.
Battery	48 V 200 Ah battery power, in two lead-acid 24 V batteries. Battery power meter on dashboard also displays alarms and working hours. Capable of working 8-10 hours without needing a recharge.
Charger	On board smart battery charger plugs into standard 110 V outlets, and automatically stops when full charge is reached. Balances the battery cells and maintains battery health. Full charge requires an 8 hour charge cycle.
Drive Motor	Crane drive powered by an AC, 3 kW 48 V reversible electric motor, controlled by an inverter.
Steering	Power assist steering tiller, with 180° rotation powered by AC electric steering assist motor, controlled by an inverter. Complete with proportional joystick controls and an anti-crushing safety device when reversing.
Brake	Electromagnetic disc brake engages automatically, and is integrated into drive motor.
Wheels	3 wheel design, non marking wheels.

25E Series



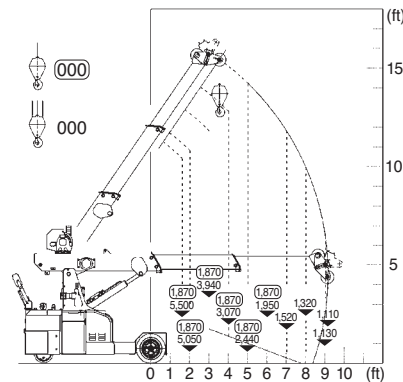
Model 25EL



Options:

De-rated (1,870 lbs) and dual rated units are also available

Model 25E



Wired remote for boom and winch



Power assisted steering tiller with 180° rotation for max. maneuverability



Fully hydraulic telescopic boom

Tadano Ltd.

Kanda Square 18th Floor, 2-2-1 Kanda-Nishikicho, Chiyoda-ku, Tokyo 101-0054, Japan
Phone: +81-3-6811-7309 (International Division)

Tadano America Corporation

4242 West Greens Road, Houston, TX 77066, Phone: +1 (281) 869-0030, Fax: +1 (281) 869-0040

tac.sales@tadano.com
www.tadano.com

