

19 E Series

PICK & CARRY CRANE

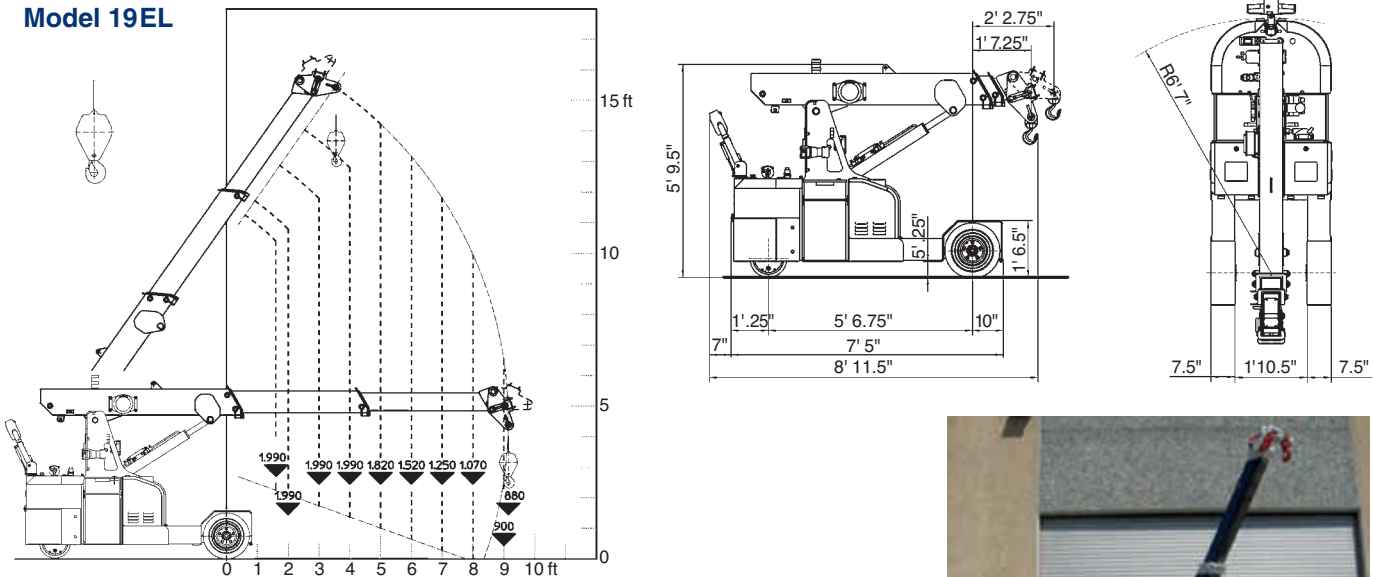
FEATURES

- Max. capacity 1,990 lbs
- Max. boom extension 9'2"
- Max. boom angle 55°
- Min. boom angle -20°
- Conformity 2006/42 CE;
2014/30 CE; 2014/35 CE;
2000/14 CE; EN 13000
- Weight 4,400 lbs



Model	19 E Series
Chassis	3 wheels structure made in high quality steel, with internal counterweights
Wheels	Front: n° 2 superelastic wheels 18 x 7 – R8" · Rear: n° 1 cushion wheel 300 x 135
Traction	Rear traction with electric motor AC – 3 kW controlled by inverter
Hydraulic System	Powered by electric motor AC – 4 kW (5 kW with hydraulic winch)
Brakes	On real wheel by electro brake
Steering	Rear by steering helm with 180° rotation powered by electric steering motor AC 700 W, controlled by inverter. Complete with safety device on backward.
Boom	Manufactured in high quality steel, composed by three elements: main boom and two telescopic hydraulic sections
Power Supply	Electric
Battery	48 V – 200 Ah
Boom's Control	By wired remote control
Drive Control	By steering helm
Safety System	Electronic load moment indicator (LMI) with display for load, boom's position and boom's angle control
Optionals	Hydraulic winch, manual jib, radio remote control, non marking wheels, battery watering system, on board battery charger, carry deck, front wheels electro brakes

Model 19EL



Wired remote for boom and winch



Power assisted steering tiller with 180° rotation for max. maneuverability



Fully hydraulic telescopic boom

Tadano Ltd.

Kanda Square 18th Floor, 2-2-1 Kanda-Nishikicho, Chiyoda-ku, Tokyo 101-0054, Japan
Phone: +81-3-6811-7309 (International Division)

Tadano America Corporation

4242 West Greens Road, Houston, TX 77066, Phone: +1 (281) 869-0030, Fax: +1 (281) 869-0040

tac.sales@tadano.com
www.tadano.com

