

Load Rating Chart

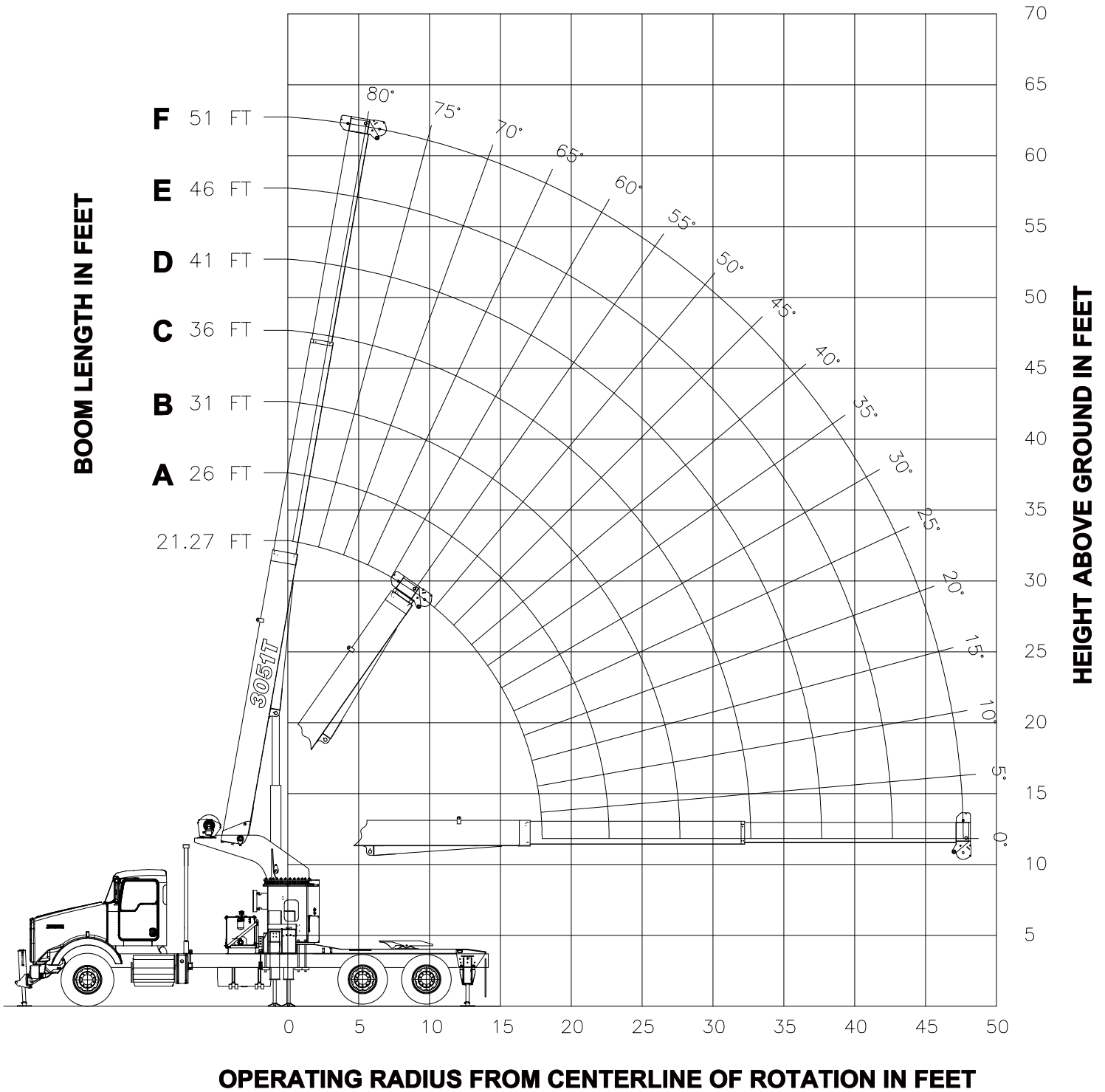
Model 3051T



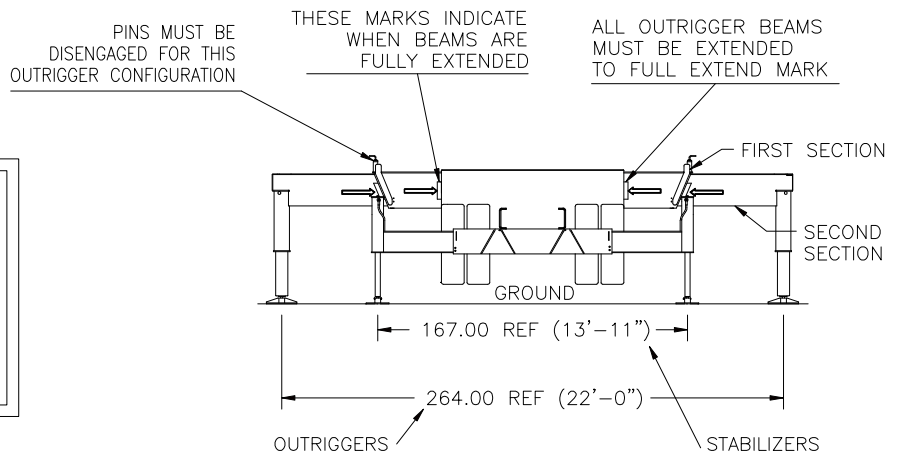
© Manitex

NOTE: Additional copies of this Load Rating Chart can be purchased from your Manitex Distributor. When ordering, use the part number shown in the bottom left corner of this page.

RANGE DIAGRAM -FULLY EXTENDED OUTRIGGER CONFIGURATION-



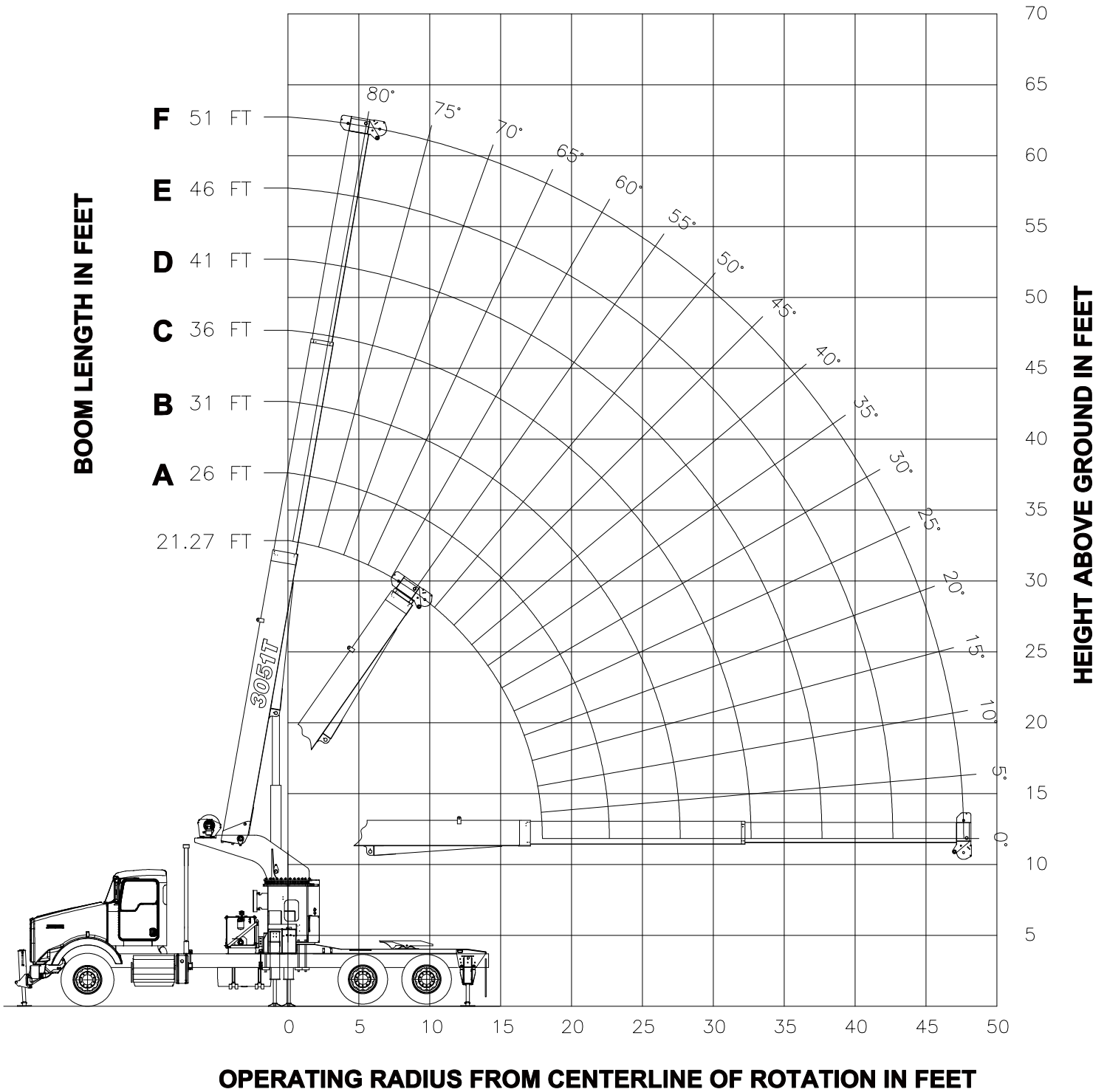
**USE THIS CHART ONLY
WHEN OUTRIGGERS
AND STABILIZERS ARE
FULLY EXTENDED**



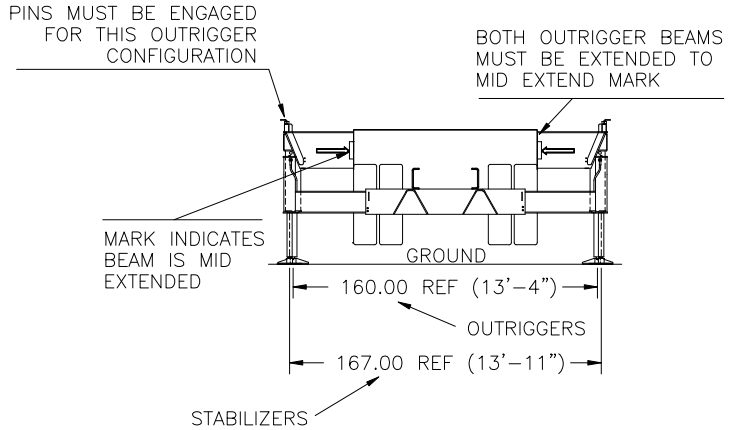
MAIN BOOM LMI CODE 1

LOAD RADIUS (FT)	21.27 FT		26 FT (A)		31 FT (B)		36 FT (C)		41 FT (D)		46 FT (E)		51 FT (F)		LOAD RADIUS (FT)
	LOADED BOOM ANGLE (DEG)	LOAD CAPACITY (LBS)	LOADED BOOM ANGLE (DEG)	CODE 1 LOAD CAPACITY (LBS)	LOADED BOOM ANGLE (DEG)	LOAD CAPACITY (LBS)	LOADED BOOM ANGLE (DEG)	LOAD CAPACITY (LBS)	LOADED BOOM ANGLE (DEG)	LOAD CAPACITY (LBS)	LOADED BOOM ANGLE (DEG)	LOAD CAPACITY (LBS)	LOADED BOOM ANGLE (DEG)	LOAD CAPACITY (LBS)	
5	70	60000													5
8	60.5	43700	66.5	41700	71	40100	74	38900	76.5	38000					8
10	54	38200	61.5	36400	67	35200	70.5	34100	73.5	33200	75.5	32200	77	28520	10
12	47	34300	56.5	32700	62.5	31200	67	30100	70.5	29250	73	28540	75	25800	12
14	38.5	30700	50.5	29440	58.5	28160	63.5	27110	67.5	26640	70.5	25940	72.5	23780	14
16	27.5	27160	44.5	26760	53.5	25990	60	25010	64	24190	67.5	23520	70.5	21820	16
18			37.5	24640	49	23840	56	22960	61	22200	65	21550	68	20190	18
20			28.5	22260	43.5	21980	52	21230	57.5	20530	62	19910	65.5	18520	20
25					26.5	17760	40.5	17770	48.5	17570	54.5	17070	58.5	15410	25
30							24.5	13040	38	13130	46	13190	51.5	12950	30
35									23	9230	36	9300	44	9340	35
40											22	7520	34.5	7580	40
45													21	6280	45
50															50
	0	19400	0	15550	0	12650	0	10550	0	9000	0	7790	0	3420	

RANGE DIAGRAM -MID EXTENDED OUTRIGGER CONFIGURATION-



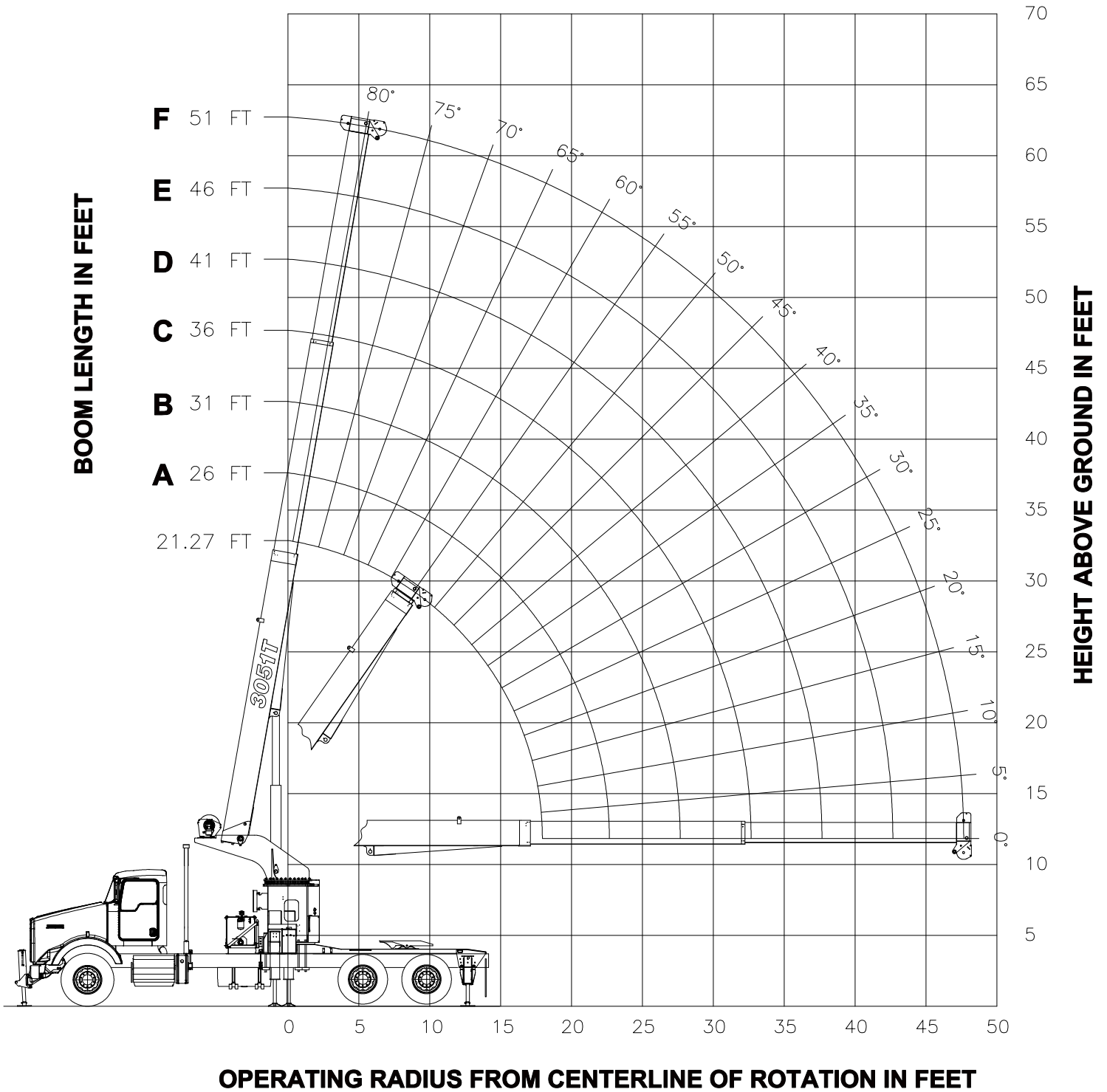
**USE THIS CHART ONLY WHEN
FRONT OUTRIGGERS ARE IN
THE INTERMEDIATE POSITION
AND STABILIZERS
ARE FULLY EXTENDED**



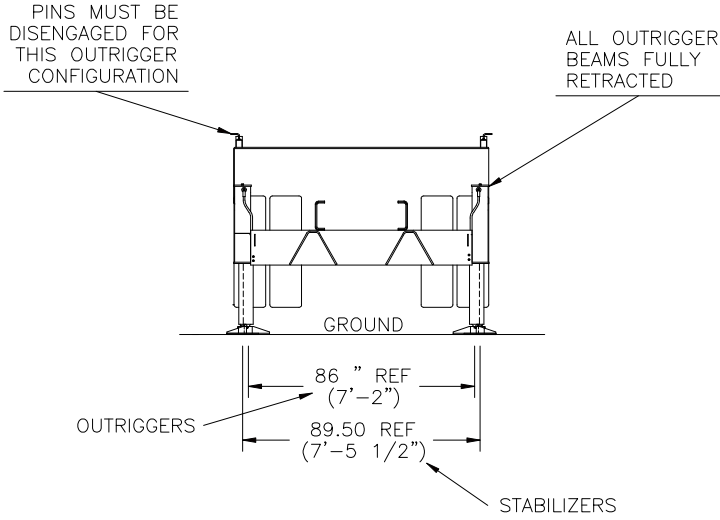
MAIN BOOM LMI CODE 2

LOAD RADIUS (FT)	21.27 FT		26 FT (A)		31 FT (B)		36 FT (C)		41 FT (D)		46 FT (E)		51 FT (F)		LOAD RADIUS (FT)
	LOADED BOOM ANGLE (DEG)	LOAD CAPACITY (LBS)	LOADED BOOM ANGLE (DEG)	CODE 1 LOAD CAPACITY (LBS)	LOADED BOOM ANGLE (DEG)	LOAD CAPACITY (LBS)	LOADED BOOM ANGLE (DEG)	LOAD CAPACITY (LBS)	LOADED BOOM ANGLE (DEG)	LOAD CAPACITY (LBS)	LOADED BOOM ANGLE (DEG)	LOAD CAPACITY (LBS)	LOADED BOOM ANGLE (DEG)	LOAD CAPACITY (LBS)	
5	70	60000													5
8	60.5	43700	66.5	41700	71	40100	74	38900	76.5	38000					8
10	54	38200	61.5	36400	67	35200	70.5	34100	73.5	33200	75.5	32200	77	28520	10
12	47	30630	56.5	30920	62.5	31120	67	30100	70.5	29250	73	28540	75	25800	12
14	38.5	21930	50.5	22190	58.5	22360	63.5	22480	67.5	22570	70.5	22640	72.5	22690	14
16	27.5	16830	44.5	17090	53.5	17250	60	17360	64	17440	67.5	17500	70.5	17540	16
18			37.5	13740	49	13900	56	14000	61	14070	65	14130	68	14170	18
20			28.5	11370	43.5	11530	52	11620	57.5	11690	62	11750	65.5	11790	20
25					26.5	7820	40.5	7920	48.5	7980	54.5	8030	58.5	8070	25
30							24.5	5770	38	5840	46	5890	51.5	5920	30
35									23	4000	36	4060	44	4100	35
40											22	3180	34.5	3230	40
45													21	2560	45
50															50
	0	13830	0	9490	0	6730	0	4830	0	3560	0	2850	0	1200	

RANGE DIAGRAM -FULLY RETRACTED OUTRIGGER/STABILIZER CONFIGURATION-



**USE THIS CHART
ONLY WHEN
OUTRIGGERS AND
STABILIZERS ARE
FULLY RETRACTED**



MAIN BOOM LMI CODE 3

LOAD RADIUS (FT)	21.27 FT		26 FT (A)		31 FT (B)		36 FT (C)		41 FT (D)		46 FT (E)		51 FT (F)		LOAD RADIUS (FT)
	LOADED BOOM ANGLE (DEG)	LOAD CAPACITY (LBS)	LOADED BOOM ANGLE (DEG)	CODE 1 LOAD CAPACITY (LBS)	LOADED BOOM ANGLE (DEG)	LOAD CAPACITY (LBS)	LOADED BOOM ANGLE (DEG)	LOAD CAPACITY (LBS)	LOADED BOOM ANGLE (DEG)	LOAD CAPACITY (LBS)	LOADED BOOM ANGLE (DEG)	LOAD CAPACITY (LBS)	LOADED BOOM ANGLE (DEG)	LOAD CAPACITY (LBS)	
5	70	60000													5
8	60.5	22610	66.5	22850	71	23030	74	23150	76.5	23250					8
10	54	14810	61.5	15020	67	15170	70.5	15270	73.5	15340	75.5	15400	77	15450	10
12	47	10720	56.5	10910	62.5	11040	67	11130	70.5	11200	73	11250	75	11290	12
14	38.5	8190	50.5	8380	58.5	8500	63.5	8590	67.5	8650	70.5	8700	72.5	8730	14
16	27.5	6460	44.5	6660	53.5	6780	60	6860	64	6920	67.5	6960	70.5	7000	16
18			37.5	5410	49	5530	56	5610	61	5670	65	5710	68	5740	18
20			28.5	4460	43.5	4590	52	4670	57.5	4720	62	4760	65.5	4790	20
25					26.5	2980	40.5	3070	48.5	3130	54.5	3170	58.5	3200	25
30							24.5	2070	38	2130	46	2170	51.5	2200	30
35									23	1220	36	1280	44	1310	35
40											22	820	34.5	860	40
45													21	510	45
50															50
	0	5440	0	3670	0	2490	0	1620	0	1000	0	650	0	0	

WARNING

1. THE OPERATOR MUST READ AND UNDERSTAND THE OWNER'S MANUAL BEFORE OPERATING THIS CRANE.
2. POSITIONING OR OPERATION OF CRANE BEYOND AREAS SHOWN ON THIS CHART IS NOT INTENDED OR APPROVED EXCEPT WHERE SPECIFIED IN OWNER'S MANUAL.
3. LOADED BOOM ANGLES AT SPECIFIED BOOM LENGTHS GIVE ONLY AN APPROXIMATION OF THE OPERATING RADIUS. THE BOOM ANGLE BEFORE LOADING SHOULD BE GREATER TO ACCOUNT FOR DEFLECTIONS. DO NOT EXCEED THE OPERATING RADIUS FOR RATED LOADS.
4. THE OPERATING RADIUS SHOWN IN THE JIB RATING CHART IS FOR FULLY EXTENDED BOOM ONLY. WHEN BOOM IS NOT FULLY EXTENDED, USE ONLY LOADED BOOM ANGLE TO DETERMINE LOAD RATING OF JIB.
5. FOR BOOM ANGLES NOT SHOWN ON JIB LOAD RATING CHART, USE RATING OF NEXT LOWER BOOM ANGLE.
6. FOR BOOM LENGTHS NOT SHOWN, USE RATING OF NEXT SHORTER OR LONGER BOOM LENGTH, WHICHEVER IS LESS. FOR RADII NOT SHOWN, USE RATING OF NEXT LONGER RADIUS.
7. CRANE LOAD RATINGS ON OUTRIGGERS ARE BASED ON FREELY SUSPENDED LOADS WITH THE MACHINE LEVELED AND STANDING ON A FIRM UNIFORM SUPPORTING SURFACE. NO ATTEMPT SHALL BE MADE TO MOVE A LOAD HORIZONTALLY ON THE GROUND IN ANY DIRECTION.
8. PRACTICAL WORKING LOADS DEPEND ON SUPPORTING SURFACE, WIND, AND OTHER FACTORS AFFECTING STABILITY SUCH AS HAZARDOUS SURROUNDINGS, EXPERIENCE OF PERSONNEL, AND PROPER HANDLING, ALL OF WHICH MUST BE TAKEN INTO ACCOUNT BY THE OPERATOR.
9. THE MAXIMUM LOAD WHICH MAY BE TELESCOPED IS LIMITED BY HYDRAULIC PRESSURE, BOOM ANGLE, AND BOOM LUBRICATION. IT IS SAFE TO ATTEMPT TO TELESCOPE ANY LOAD WITHIN THE LIMITS OF THE LOAD RATING CHART.
10. LIFTING OFF THE MAIN BOOM POINT WHILE THE SWING AROUND JIB IS ERECTED IS NOT INTENDED OR APPROVED.

INFORMATION

1. DEDUCTIONS MUST BE MADE FROM RATED LOADS FOR STOWED JIB, OPTIONAL ATTACHMENTS, HOOKS, AND LOADBLOCKS (SEE DEDUCTION CHART). WEIGHTS OF SLINGS AND ALL OTHER LOAD HANDLING DEVICES SHALL BE CONSIDERED A PART OF THE LOAD.
2. LOAD RATINGS ABOVE THE HEAVY LINE ARE STRUCTURALLY LIMITED CAPACITIES. LOAD RATINGS BELOW THE HEAVY LINE ARE STABILITY LIMITED CAPACITIES AND DO NOT EXCEED 85% OF TIPPING.

DEFINITIONS

1. OPERATING RADIUS IS THE HORIZONTAL DISTANCE FROM THE AXIS OF ROTATION TO THE CENTER OF THE VERTICAL HOIST LINE OR TACKLE WITH LOAD APPLIED.
2. LOADED BOOM ANGLE AS SHOWN IN THE COLUMN HEADED BY \sphericalangle , IS THE INCLUDED ANGLE BETWEEN THE HORIZONTAL AND LONGITUDINAL AXES OF THE BOOM BASE AFTER LIFTING RATED LOAD AT RATED RADIUS.