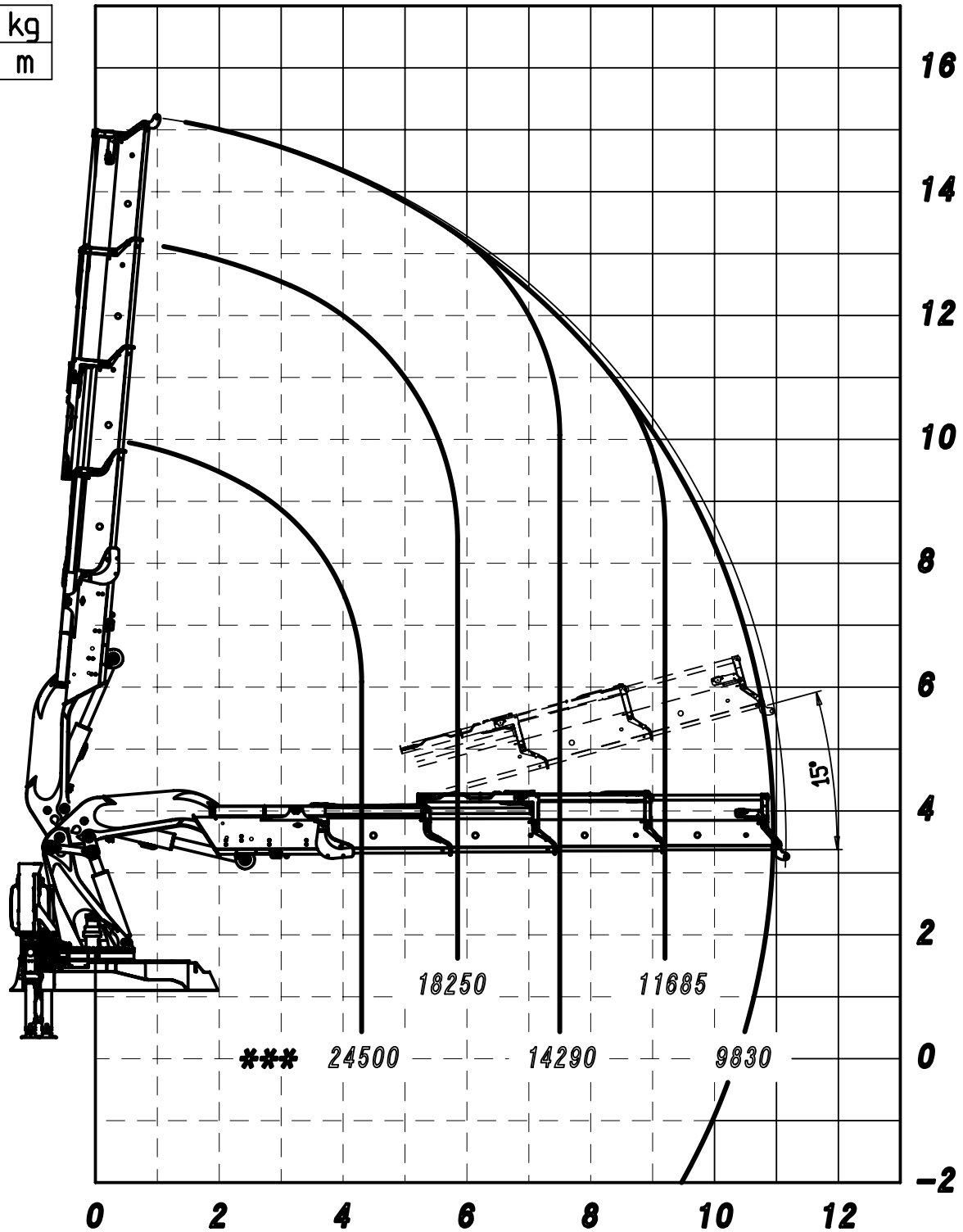


kg
m

A

B

C



*** PORTATA MASSIMA PASSANTE PER L'ORIZZONTALE
 LE PRESTAZIONI INDICATE SI OTTENGONO CON
 ANGOLO DI TARGA A 20°

** 150024 SP ** 188239

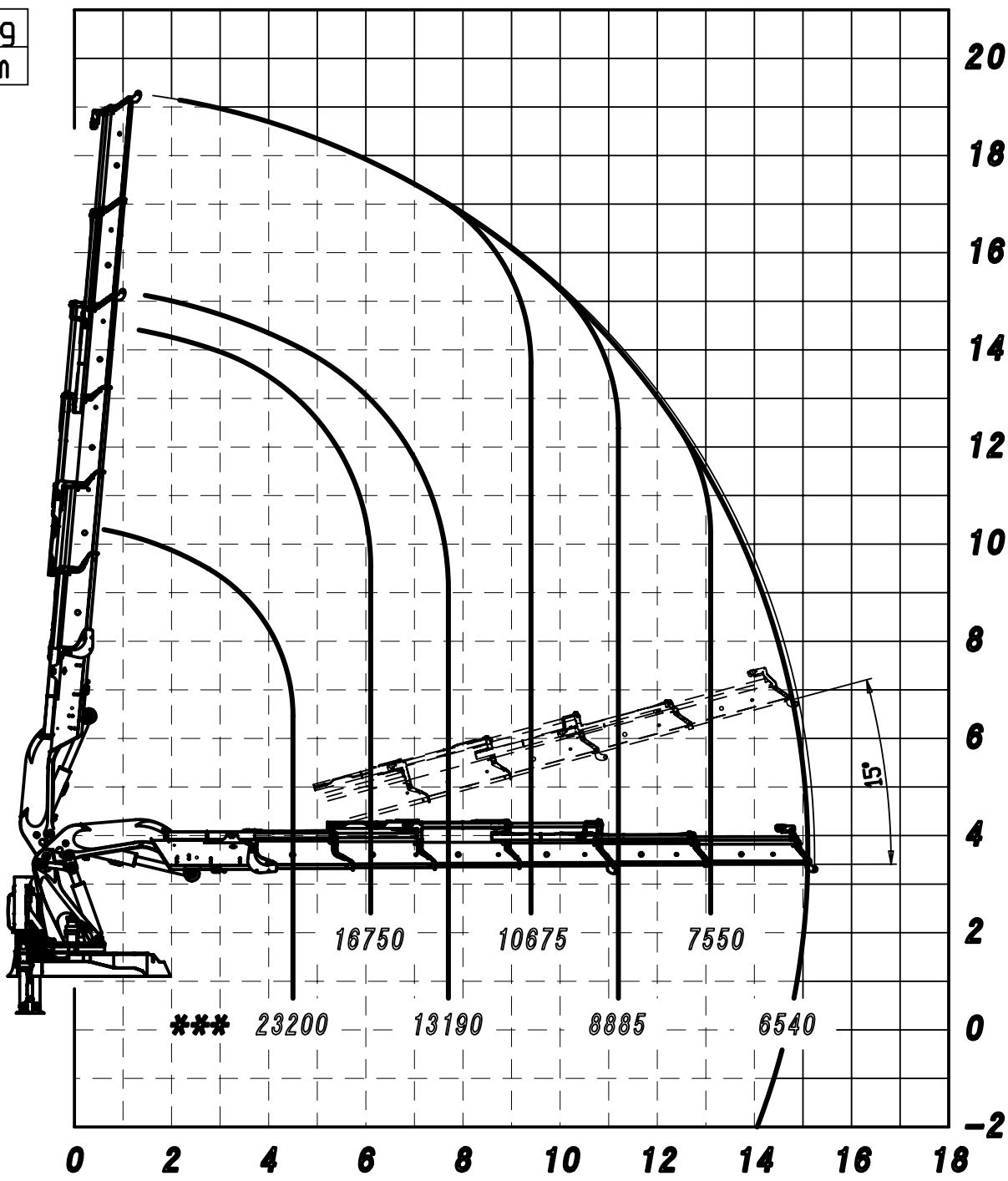
01/10/2013

kg
m

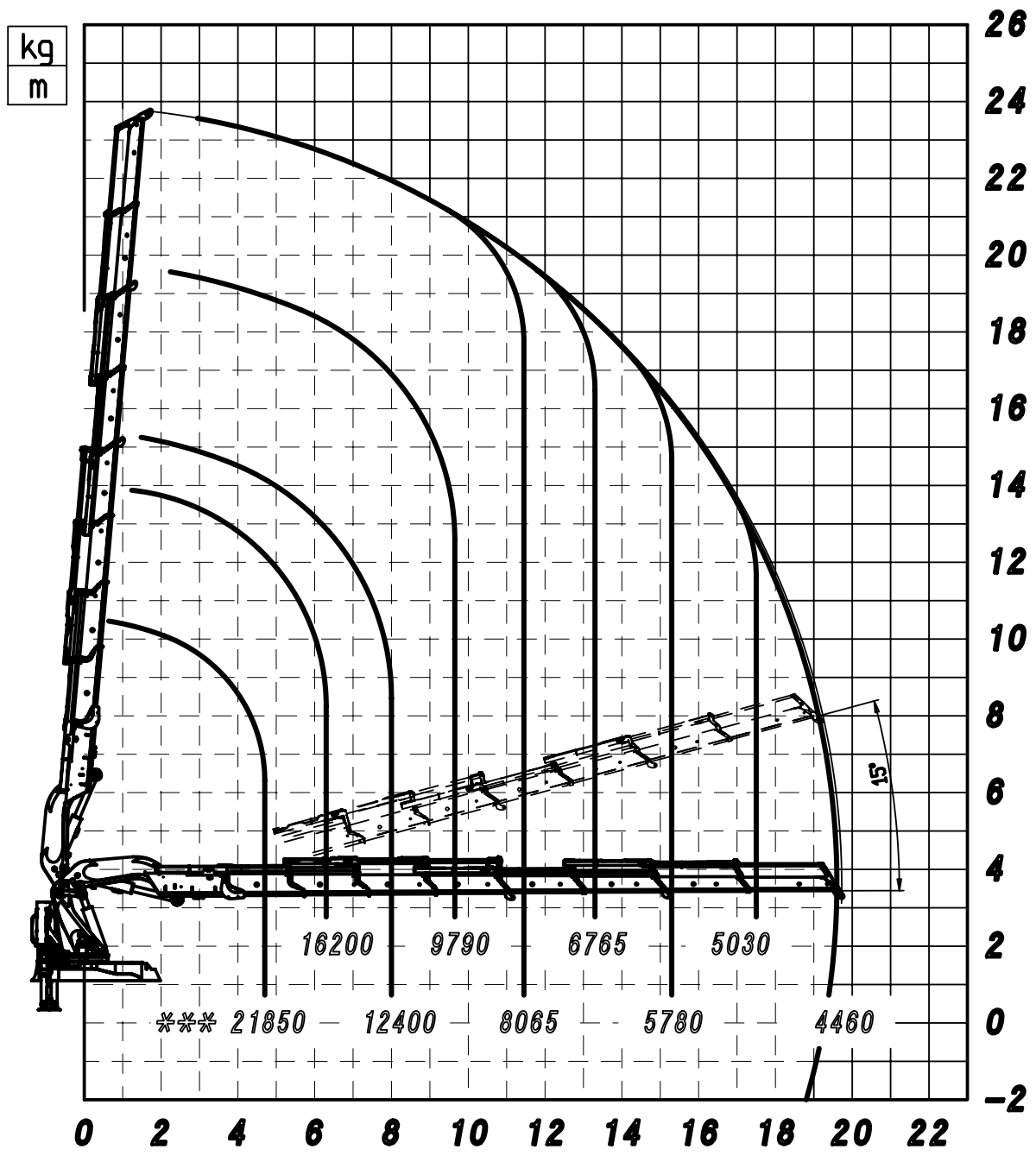
A

B

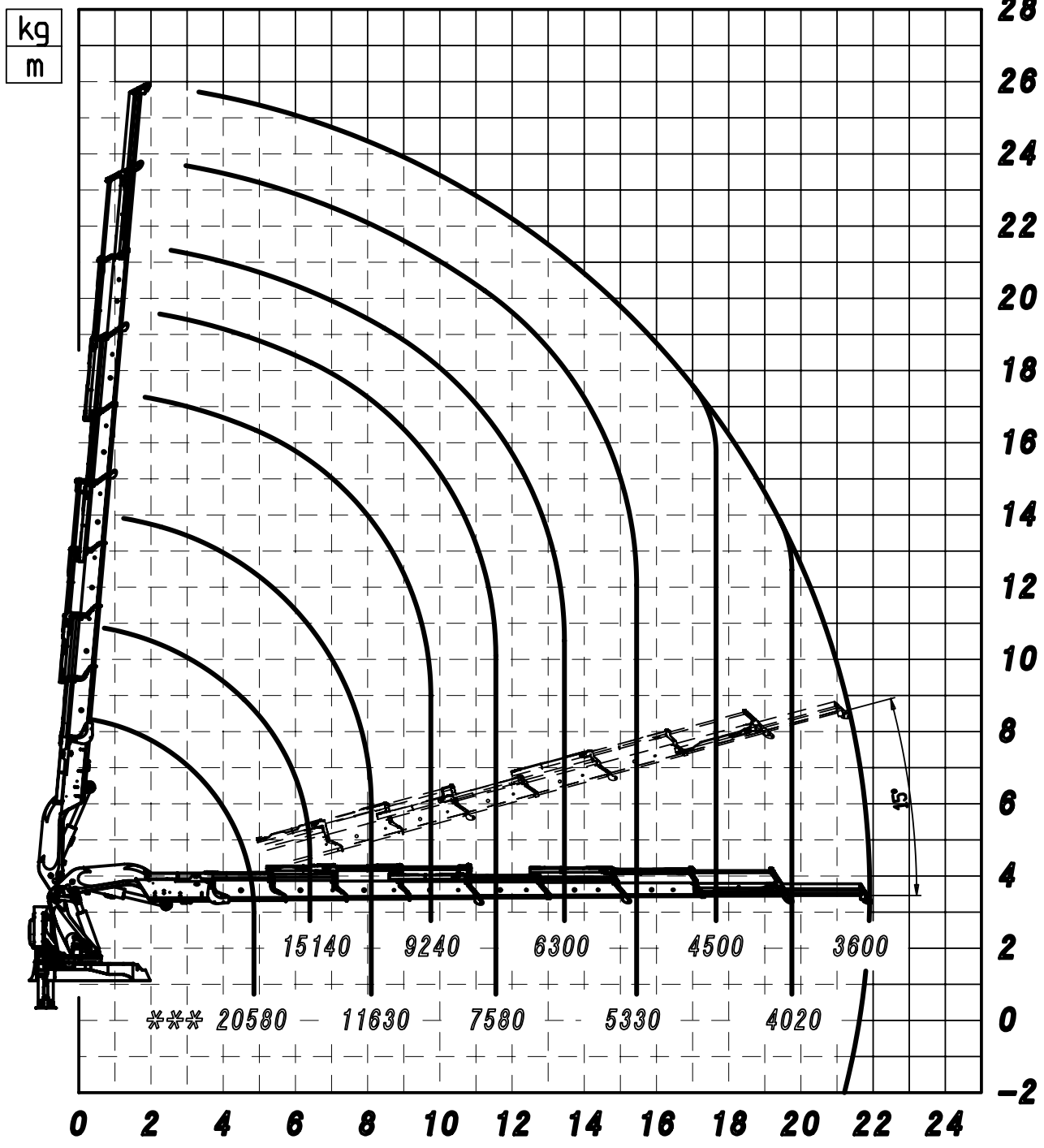
C



*** PORTATA MASSIMA PASSANTE PER L'ORIZZONTALE
 LE PRESTAZIONI INDICATE SI OTTENGONO CON
 ANGOLO DI TARGA A 20°

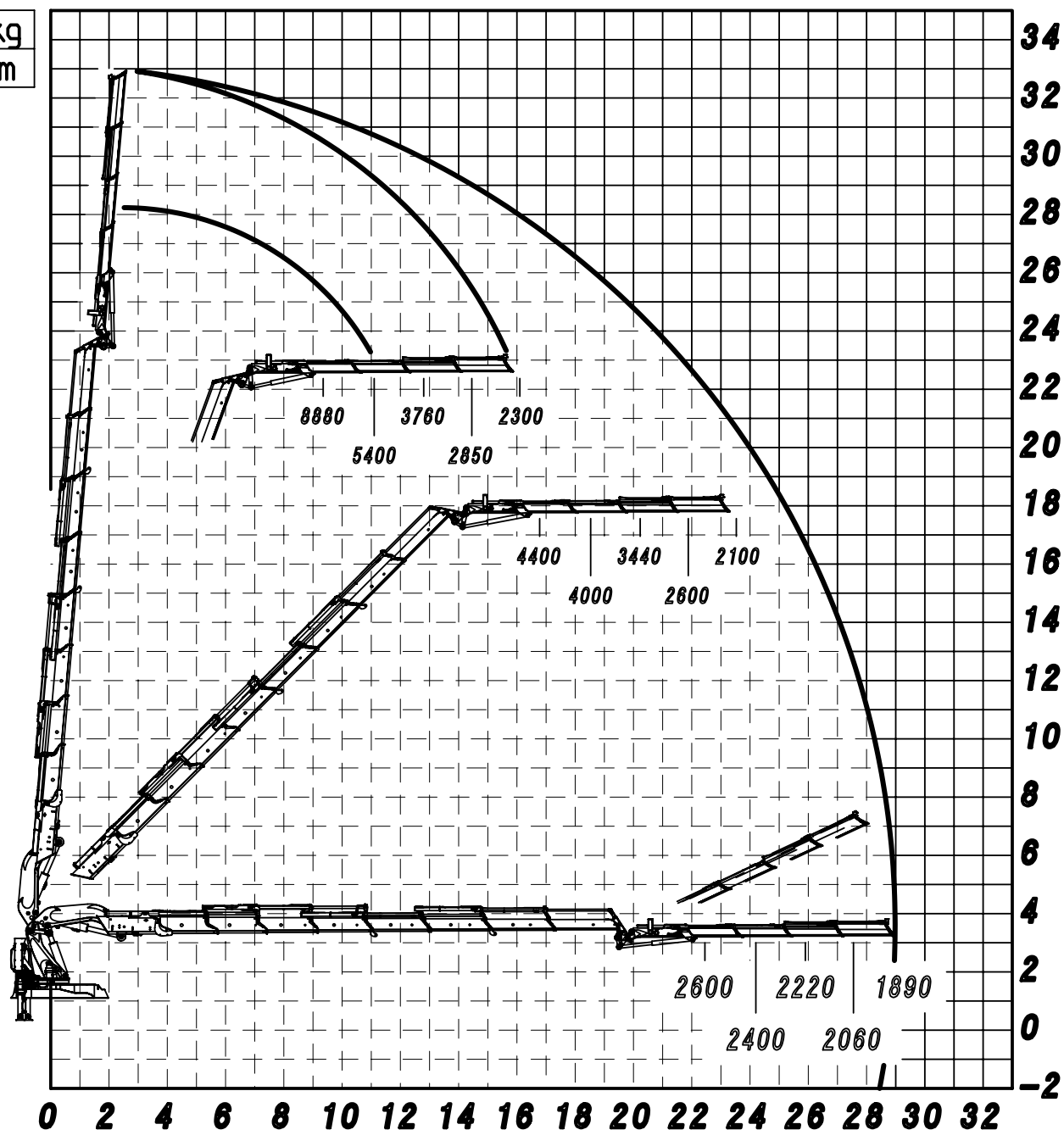


*** PORTATA MASSIMA PASSANTE PER L'ORIZZONTALE
 LE PRESTAZIONI INDICATE SI OTTENGONO CON
 ANGOLO DI TARGA A 20°



*** PORTATA MASSIMA PASSANTE PER L'ORIZZONTALE
 LE PRESTAZIONI INDICATE SI OTTENGONO CON
 ANGOLO DI TARGA A 20°

kg
m

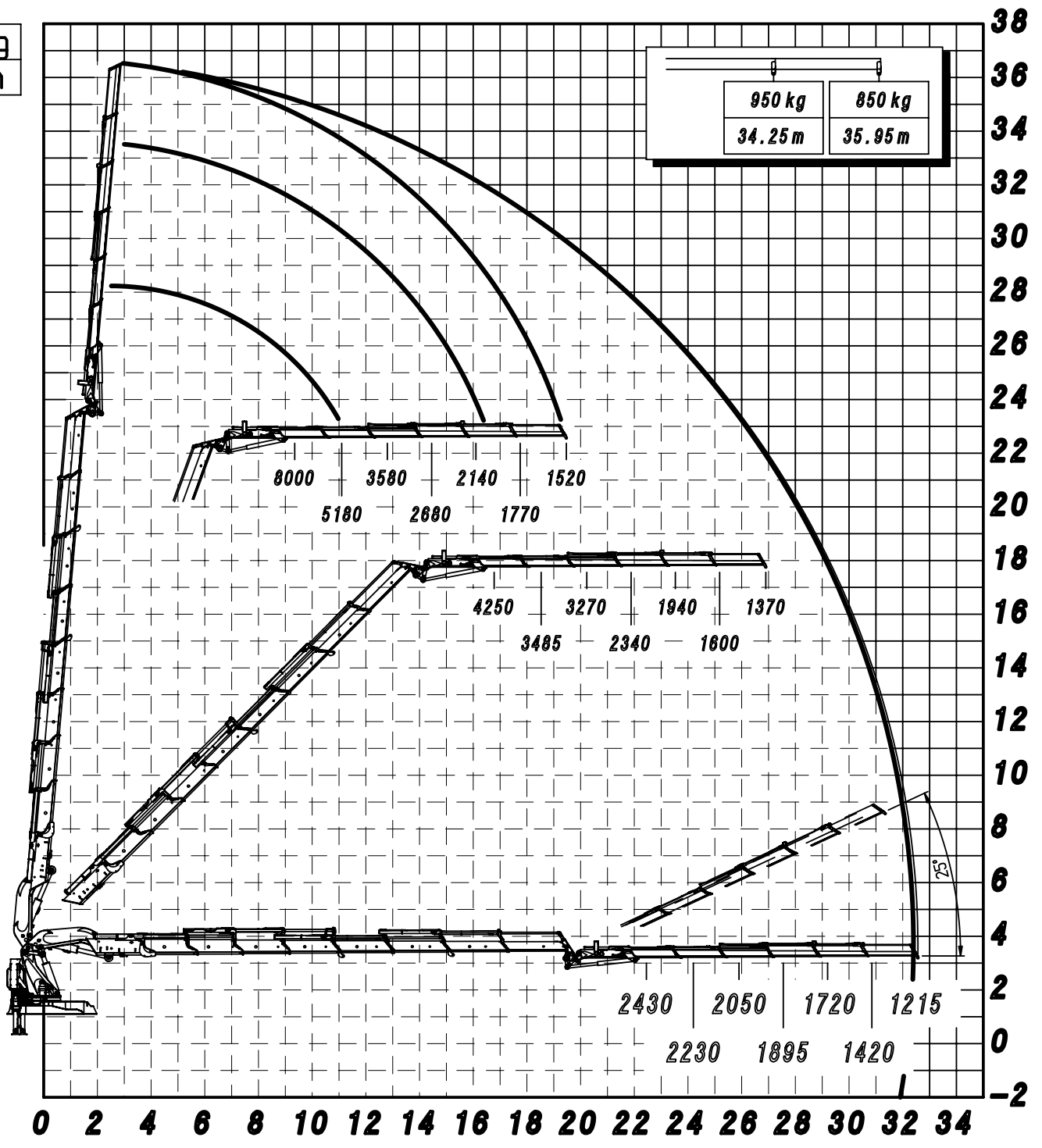


** 150028 SP +J2414.20 ** 188385

09/04/2014

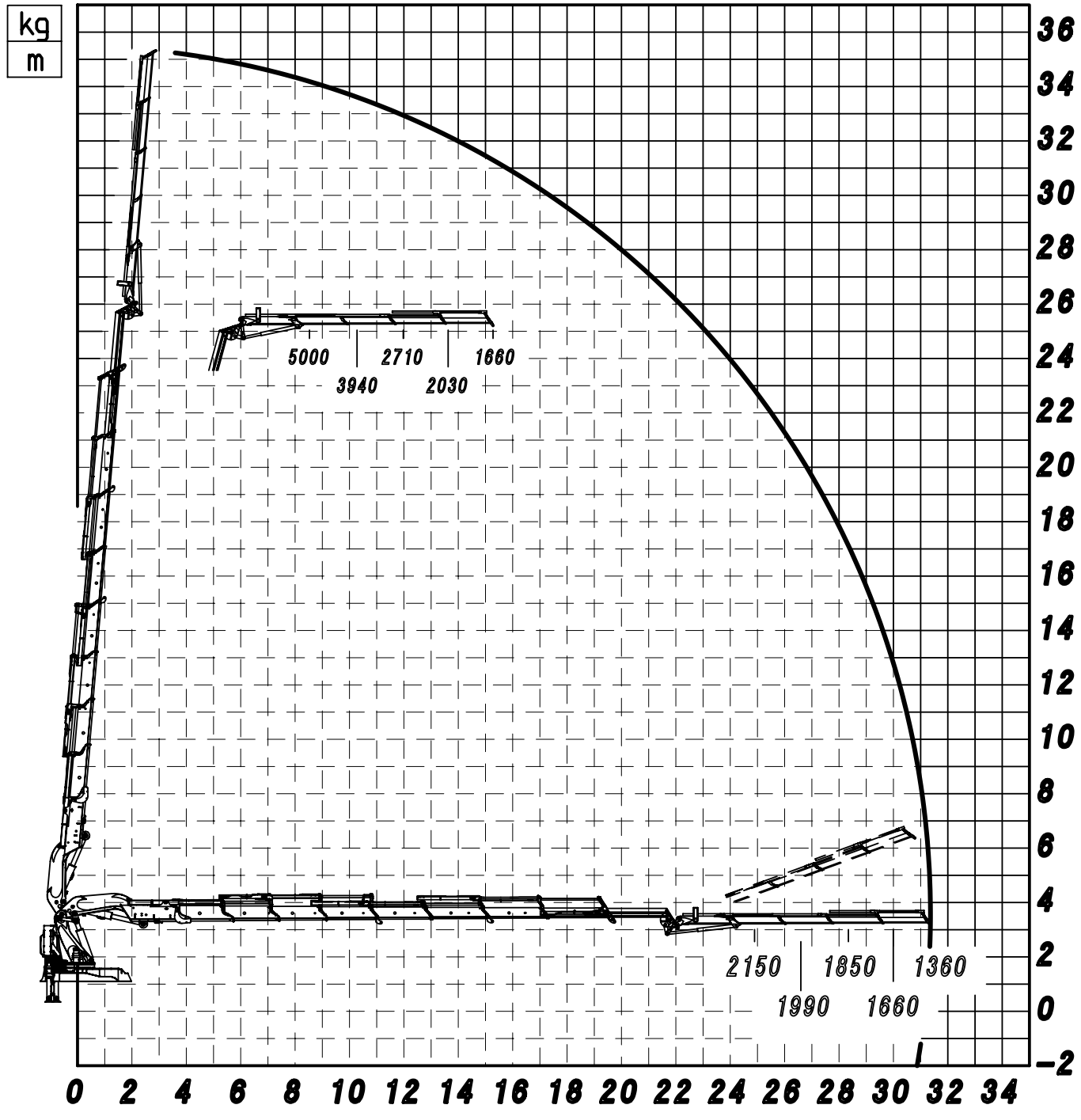
kg
m

950 kg	850 kg
34.25 m	35.95 m



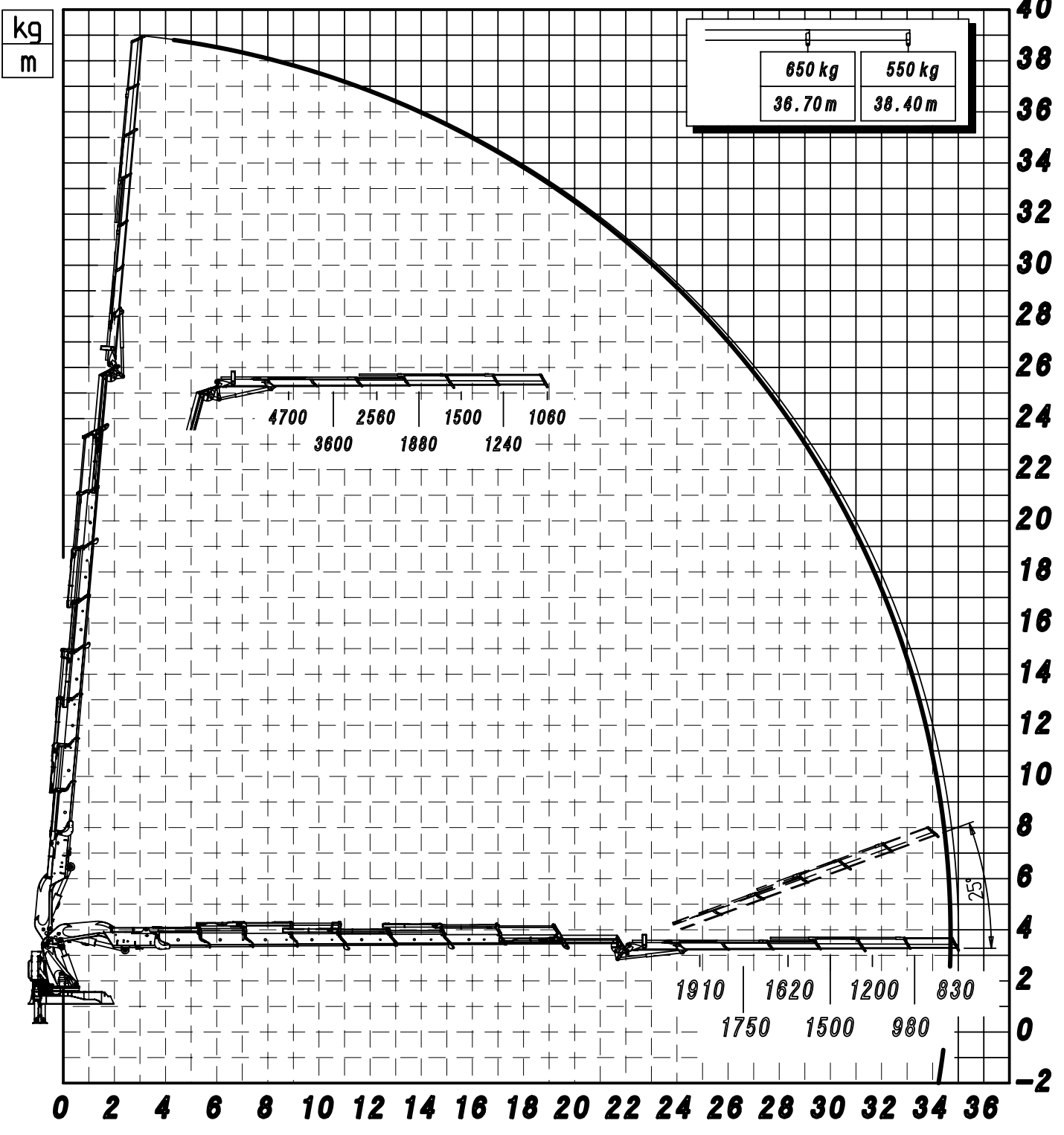
** 150028 SP +J2416.20 ** 188315

26/11/2014



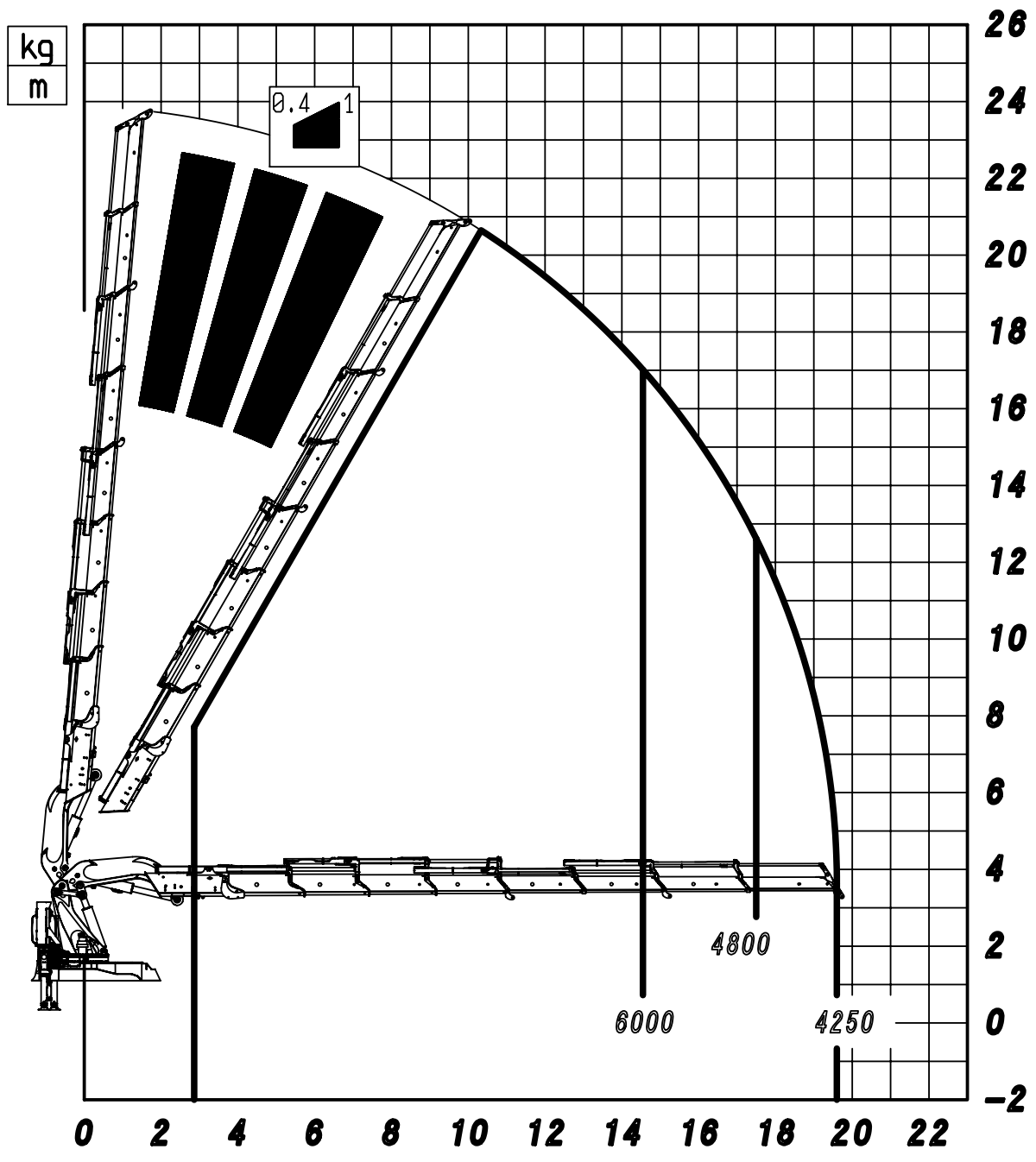
** 150029 SP +J2014.20 ** 188387


09/04/2014



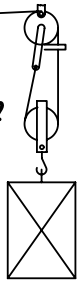
** 150029 SP +J2016.20 ** 188271

09/04/2014




MAX 3.6 T
 Classe: M 6 (UNI ISO 4301/1)

CAPACITY

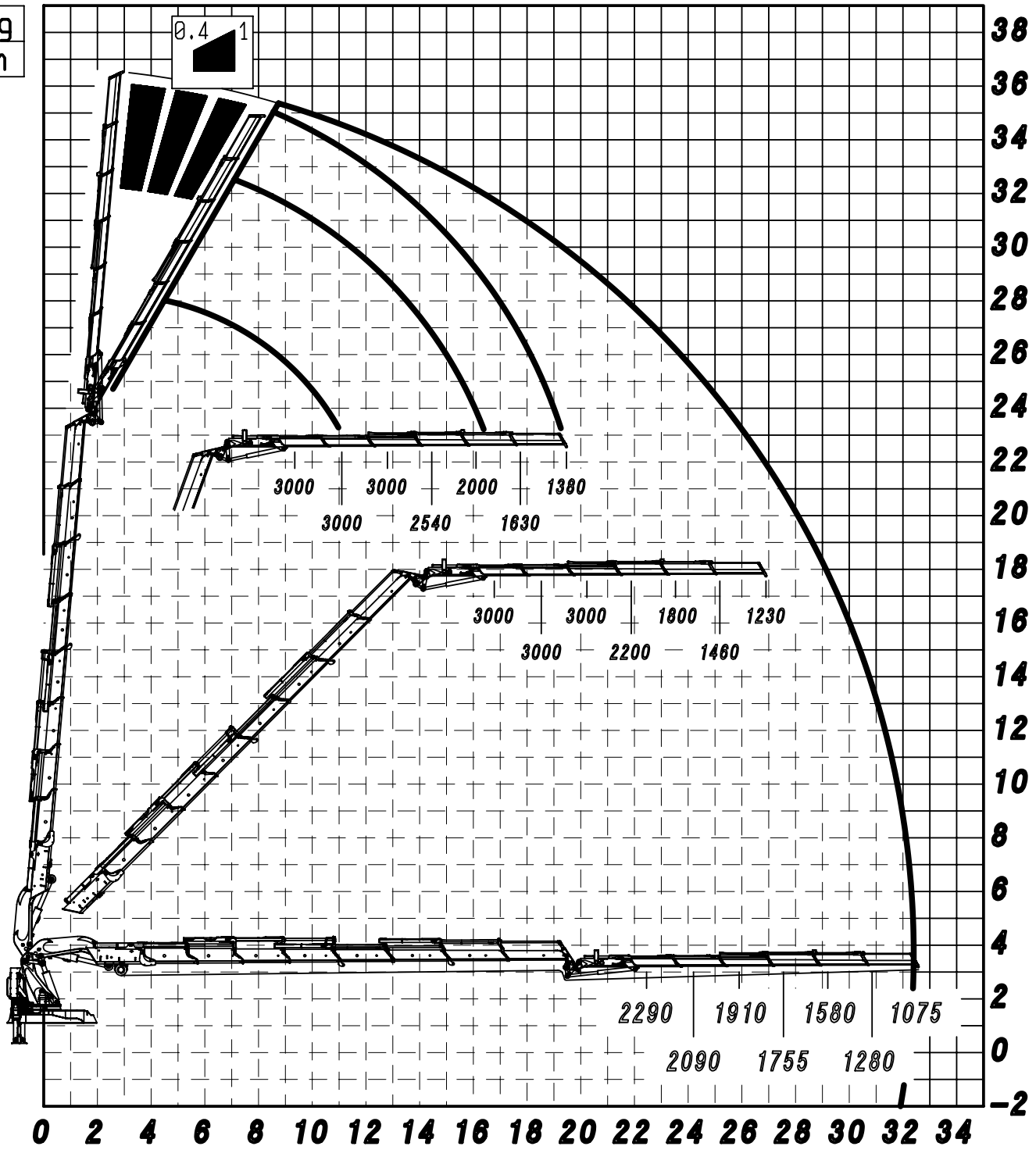
○	4° - 2750 kg.	} x2	
○	3° - 3000 kg.		
○	2° - 3310 kg.		
○	1° - 3680 kg.		


**** 150028 SP + A80PM ** 188317**

20/12/2013


kg
m





0.4 1

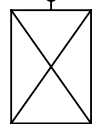


 **MAX 3.6 T**
Classe: M 6 (UNI ISO 4301/1)

CAPACITY

← 

-  4° - 2750 kg.
-  3° - 3000 kg.
-  2° - 3310 kg.
-  1° - 3680 kg.



**** 150028 SP +J2416.20 +A80PM ** 188319**

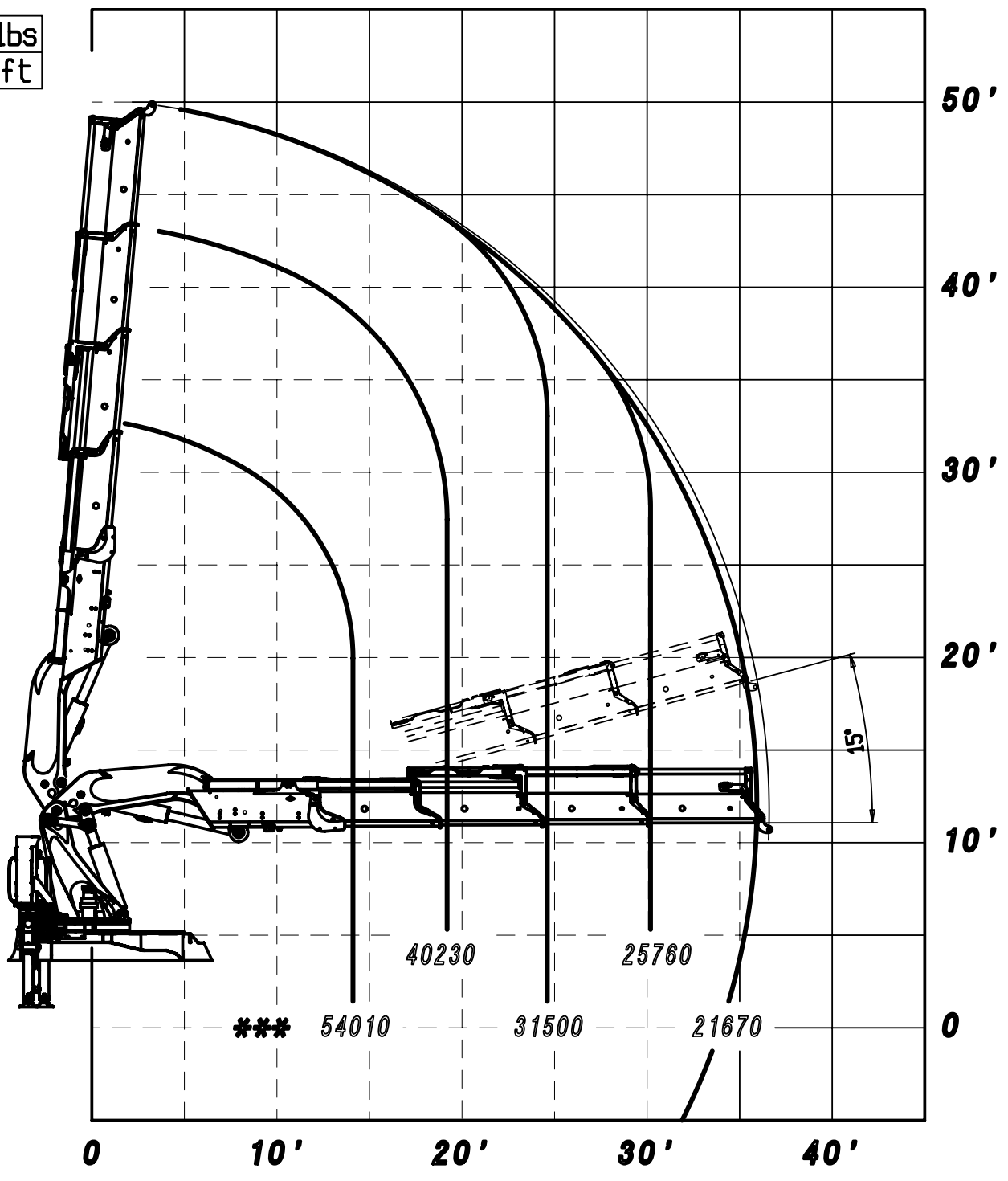
26/11/2014

lbs
ft

A

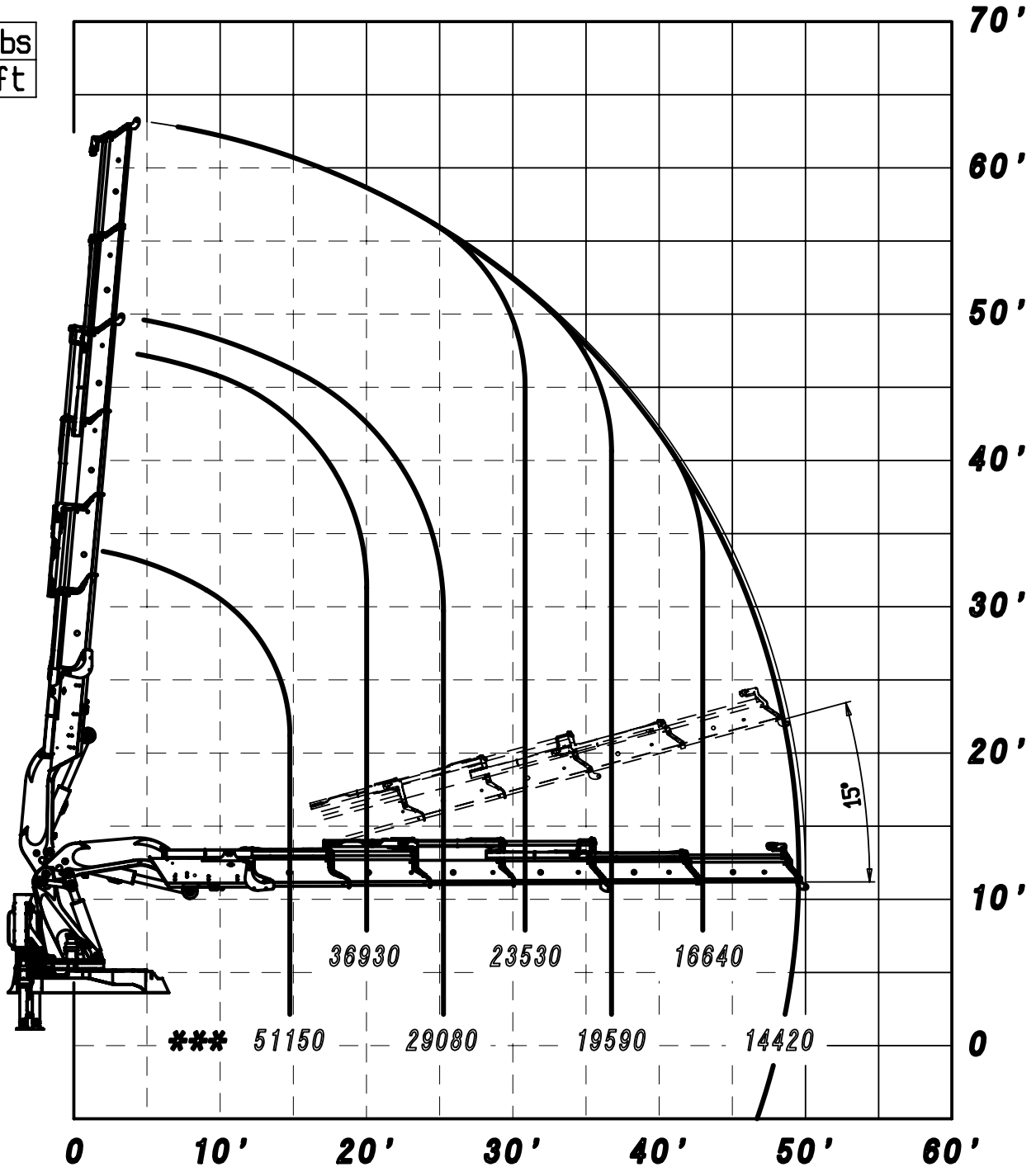
B

C

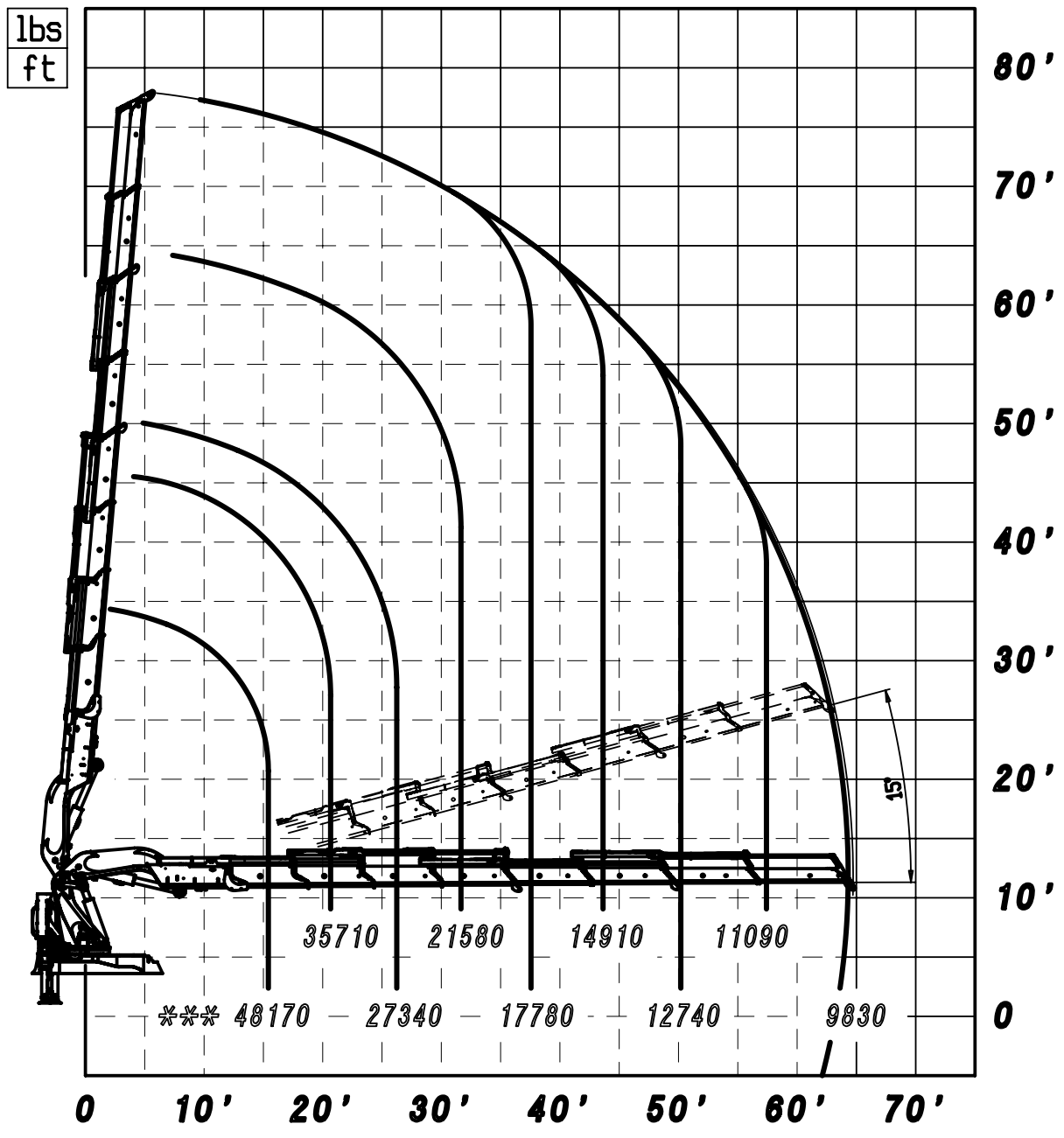


*** MAX. CAPACITY FROM HORIZONTAL TO VERTIUCAL
 THE STATED PERFORMANCES CAN BE OBTAINED WITH
 20° INCLINATED MAIN BOOM

lbs
ft

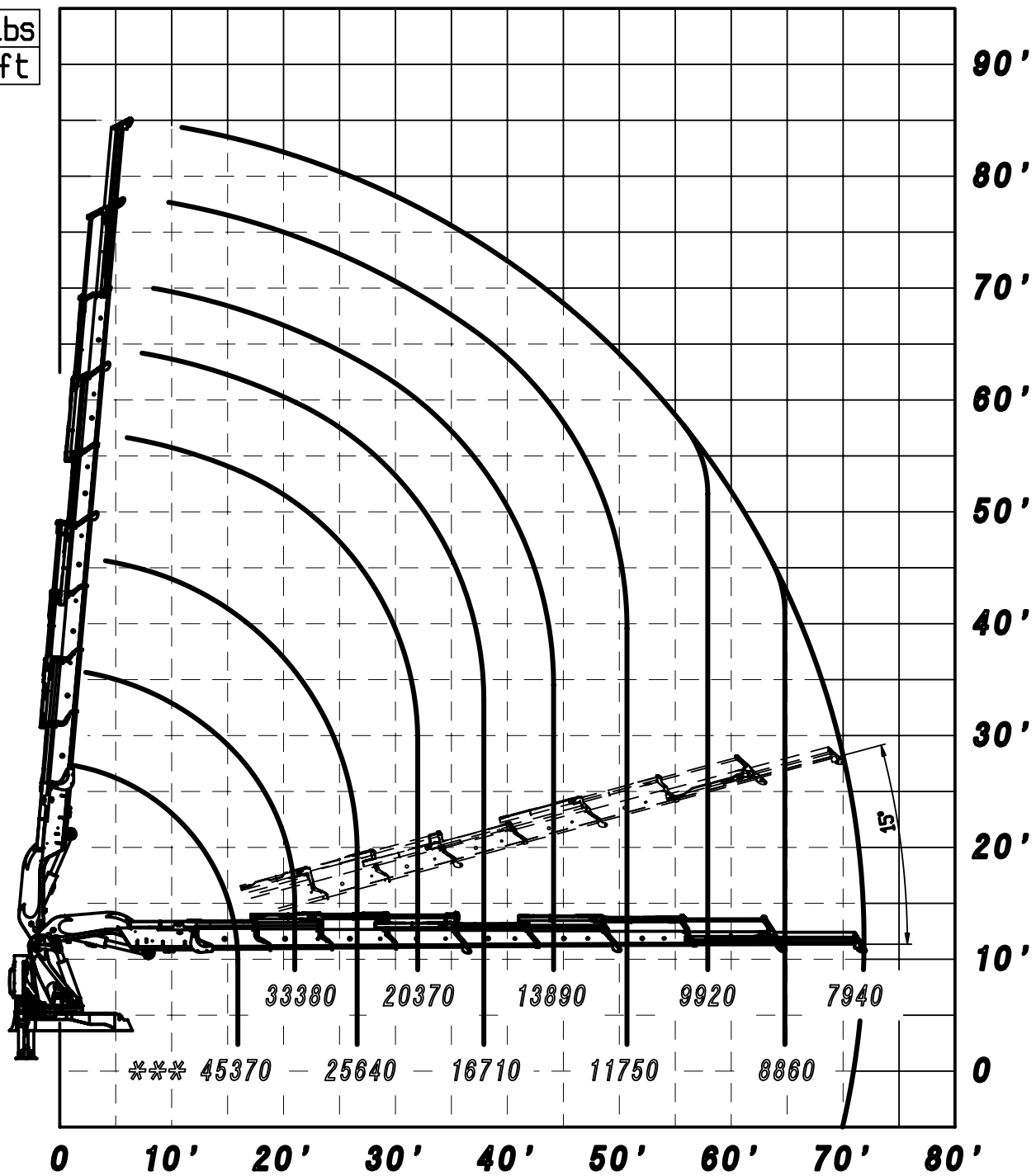


*** MAX. CAPACITY FROM HORIZONTAL TO VERTIUCAL
 THE STATED PERFORMANCES CAN BE OBTAINED WITH
 20° INCLINATED MAIN BOOM



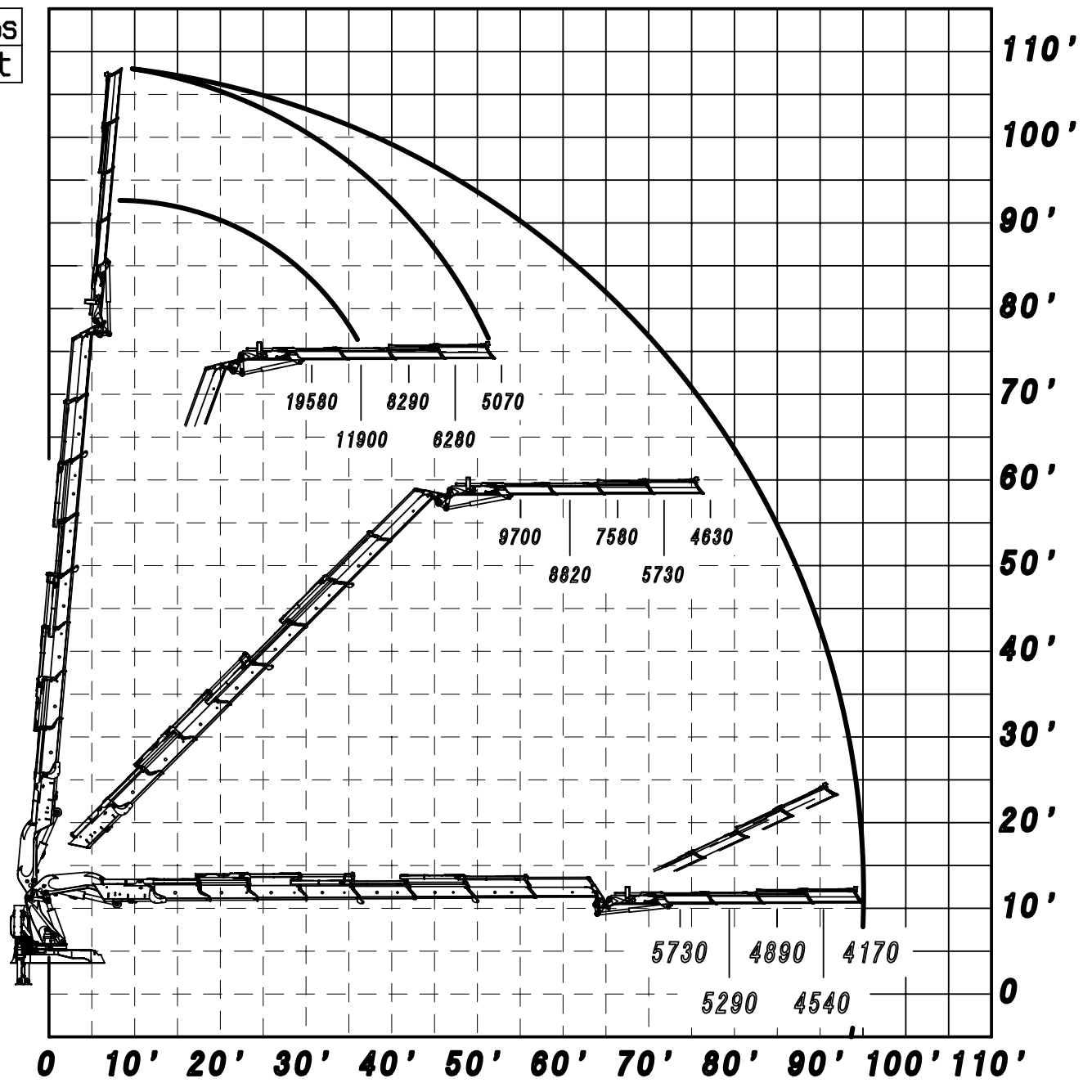
*** PORTATA MASSIMA PASSANTE PER L'ORIZZONTALE
 LE PRESTAZIONI INDICATE SI OTTENGONO CON
 ANGOLO DI TARGA A 20°

lbs
ft



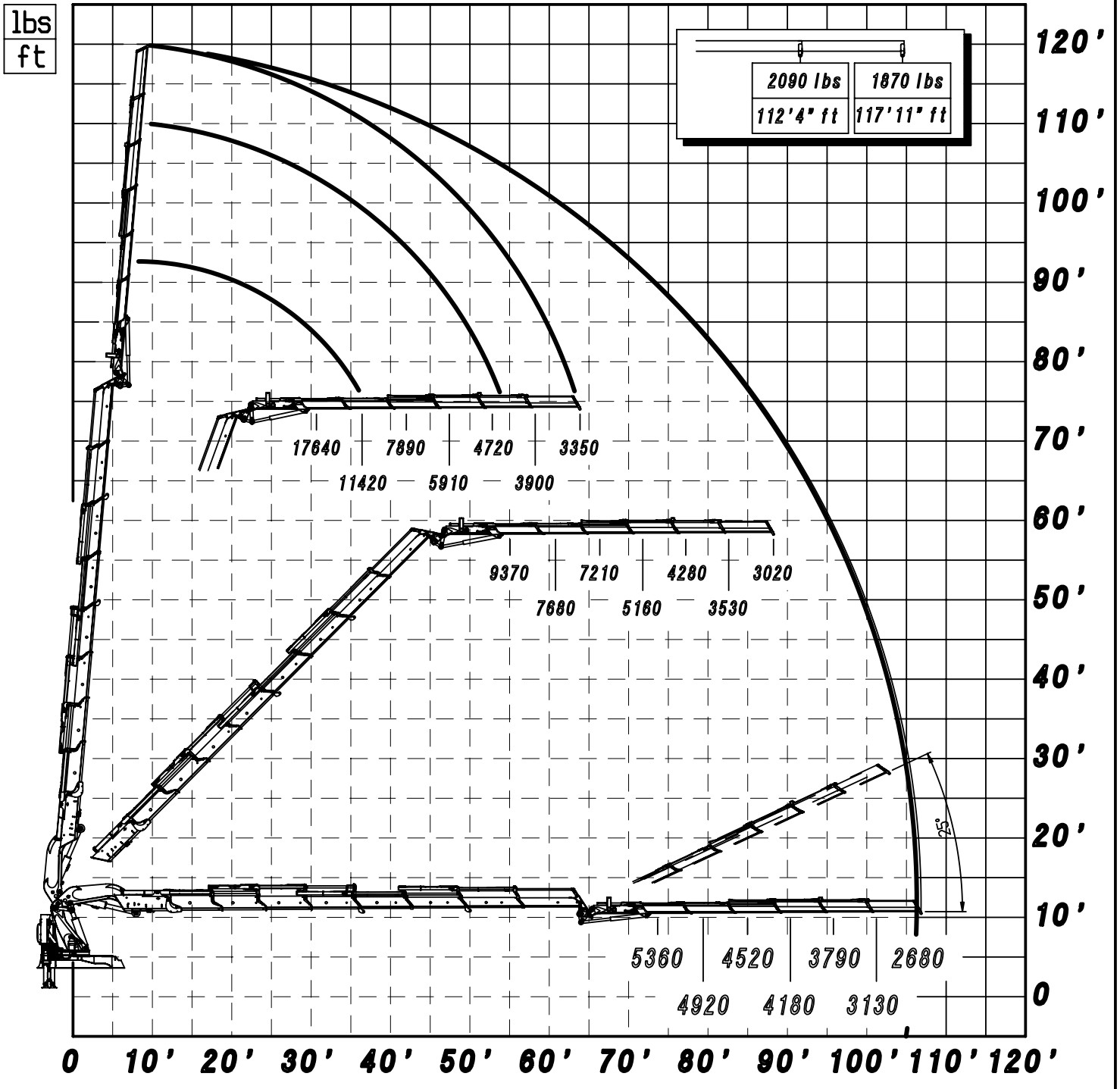
*** MAX. CAPACITY FROM HORIZONTAL TO VERTIVCAL
 THE STATED PERFORMANCES CAN BE OBTAINED WITH
 20° INCLINATED MAIN BOOM

lbs
ft



** 150028 SP +J2414.20 ** 188386

09/09/2014



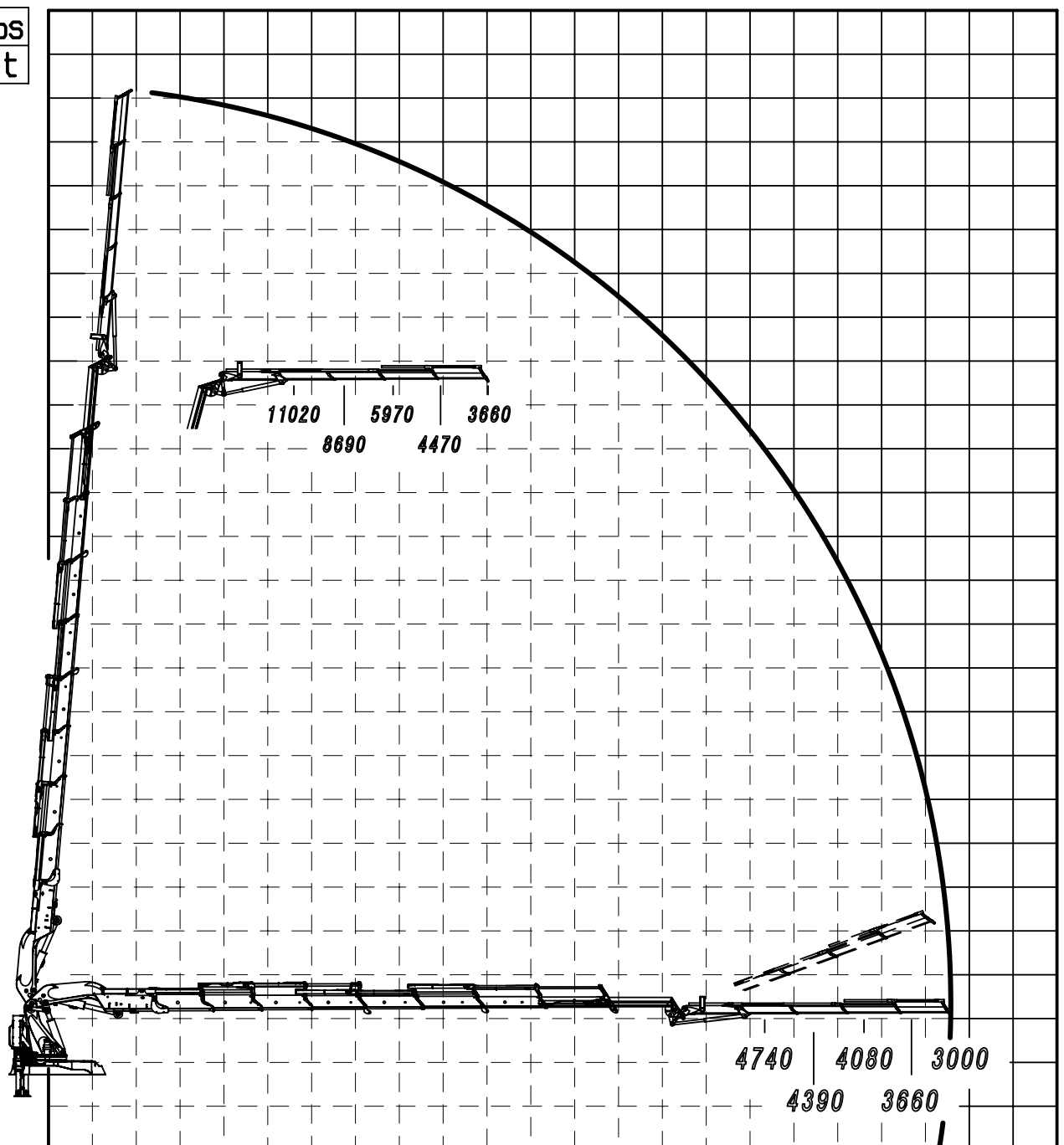
** 150028 SP +J2416.20 ** 188316

26/11/2014

lbs
ft

120'
110'
100'
90'
80'
70'
60'
50'
40'
30'
20'
10'
0

0 10' 20' 30' 40' 50' 60' 70' 80' 90' 100' 110'



** 150029 SP +J2014.20 ** 188388
09/04/2014

lbs
ft

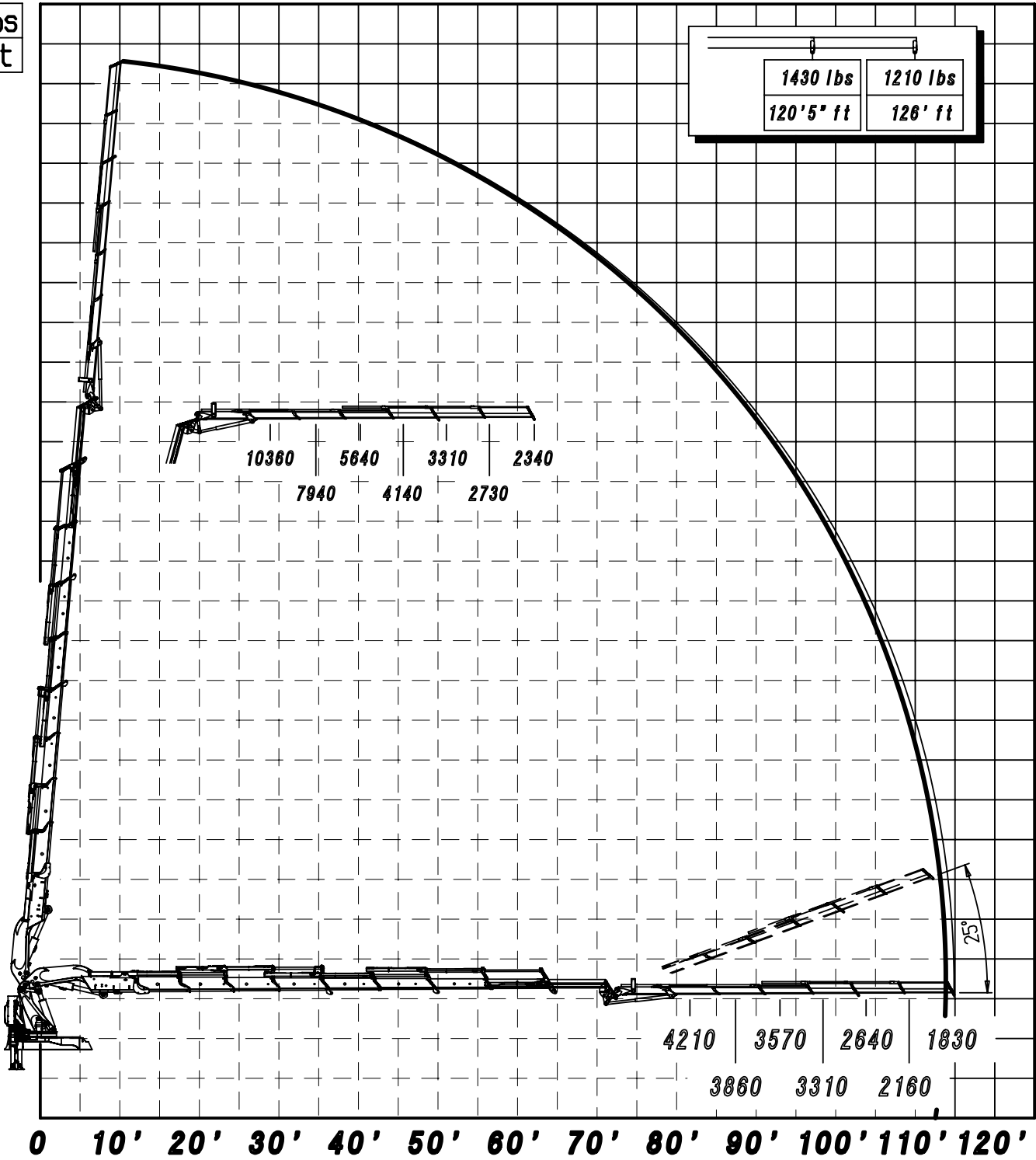
1430 lbs	1210 lbs
120'5" ft	126' ft

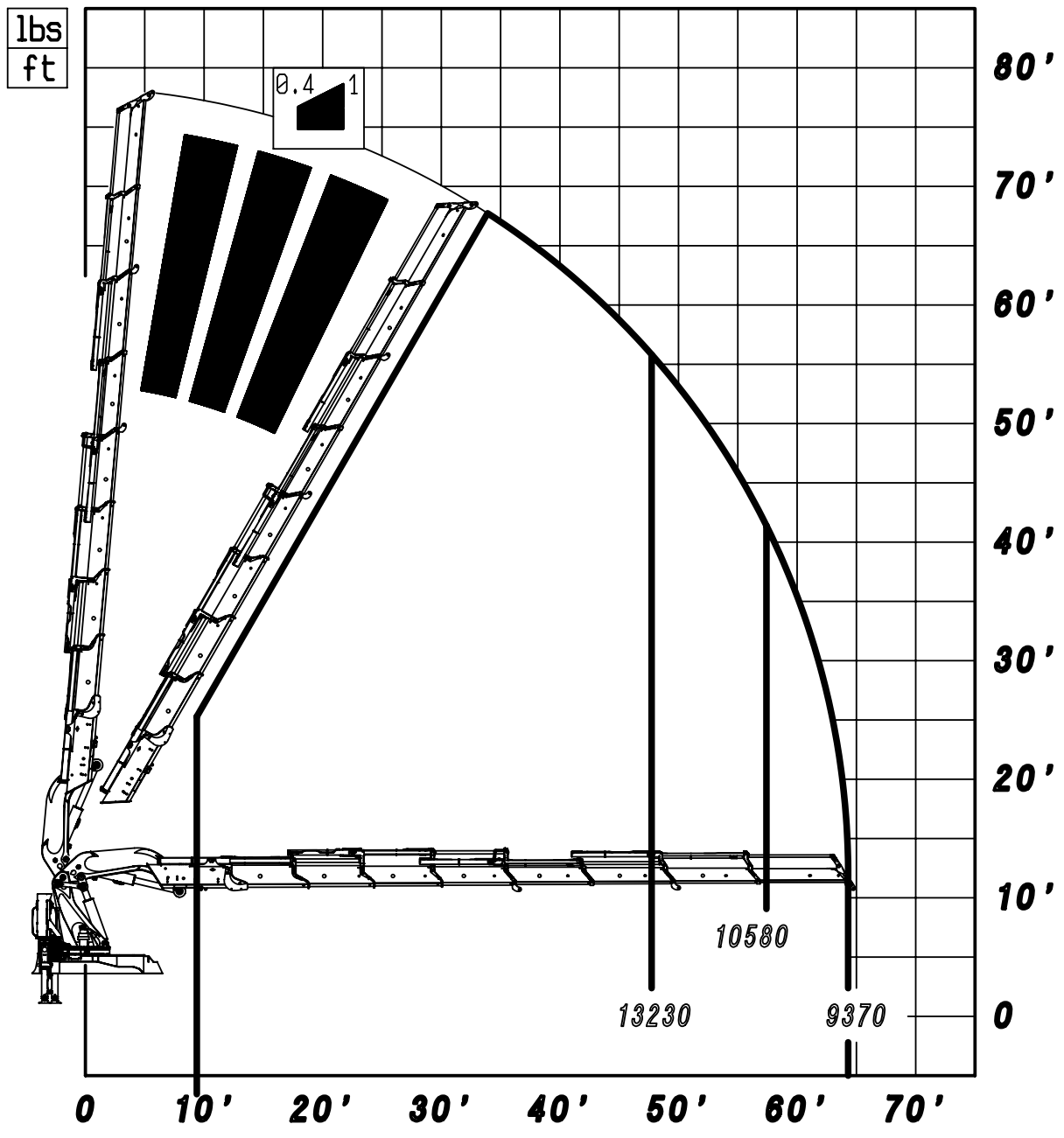
A


B

C

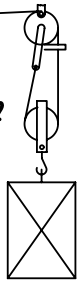
130'
120'
110'
100'
90'
80'
70'
60'
50'
40'
30'
20'
10'
0





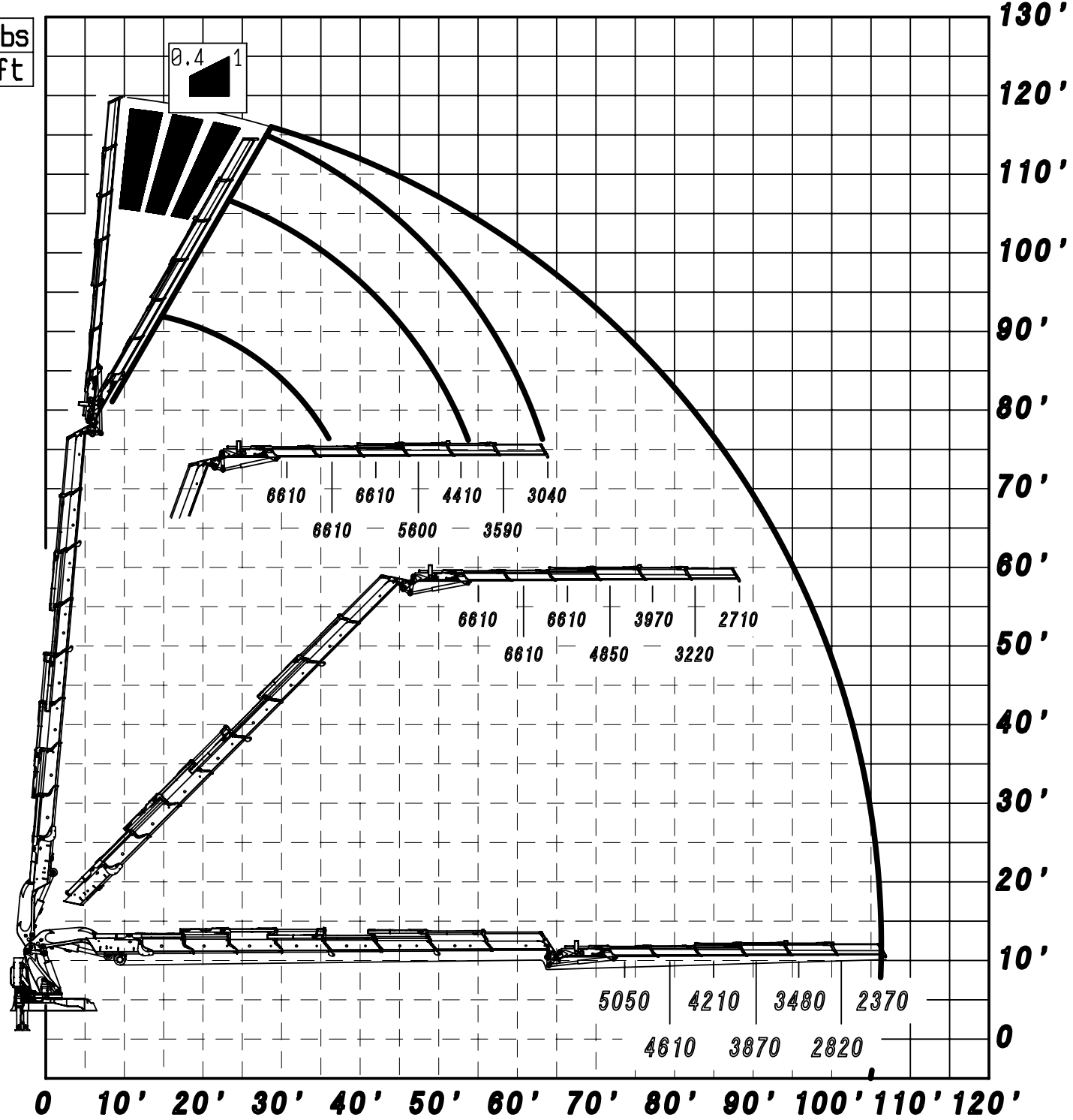
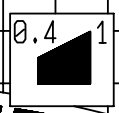

MAX 3.6 T
 Classe: M 6 (UNI ISO 4301/1)


CAPACITY

○	4° - 6060 lbs	} x2	
○	3° - 6610 lbs		
○	2° - 7300 lbs		
○	1° - 8110 lbs		

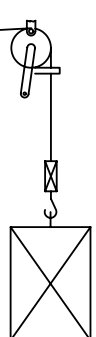
** 150028 SP + A80PM ** 188318
 20/12/2013





lbs
ft



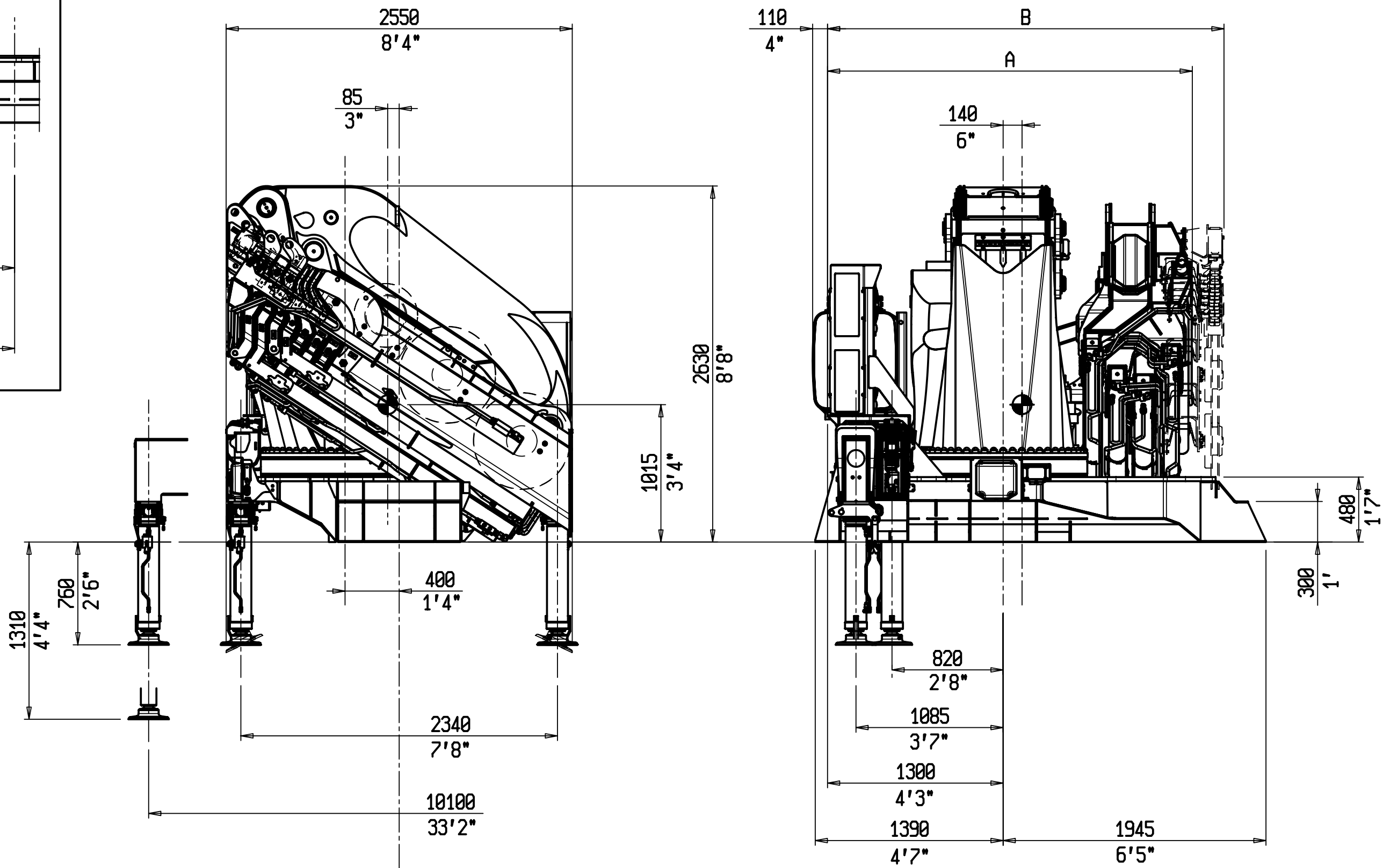
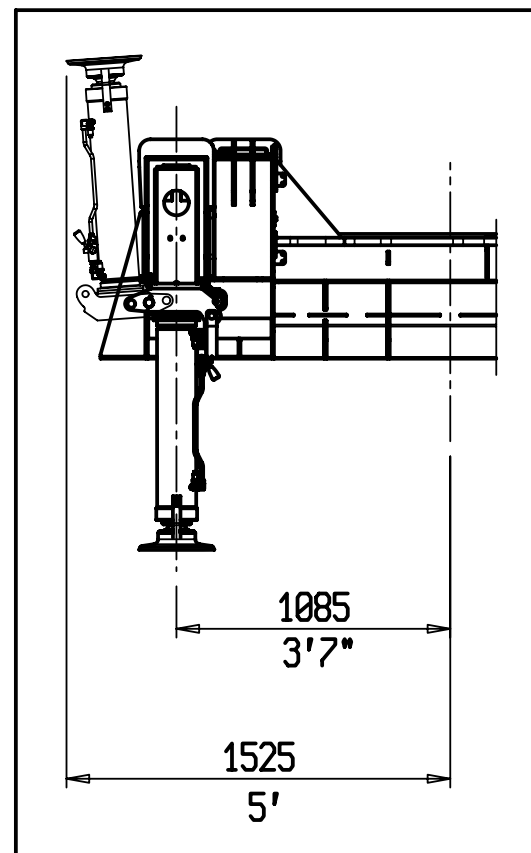
 **MAX 3.6 T**
Classe: M 6 (UNI ISO 4301/1)

CAPACITY

← 

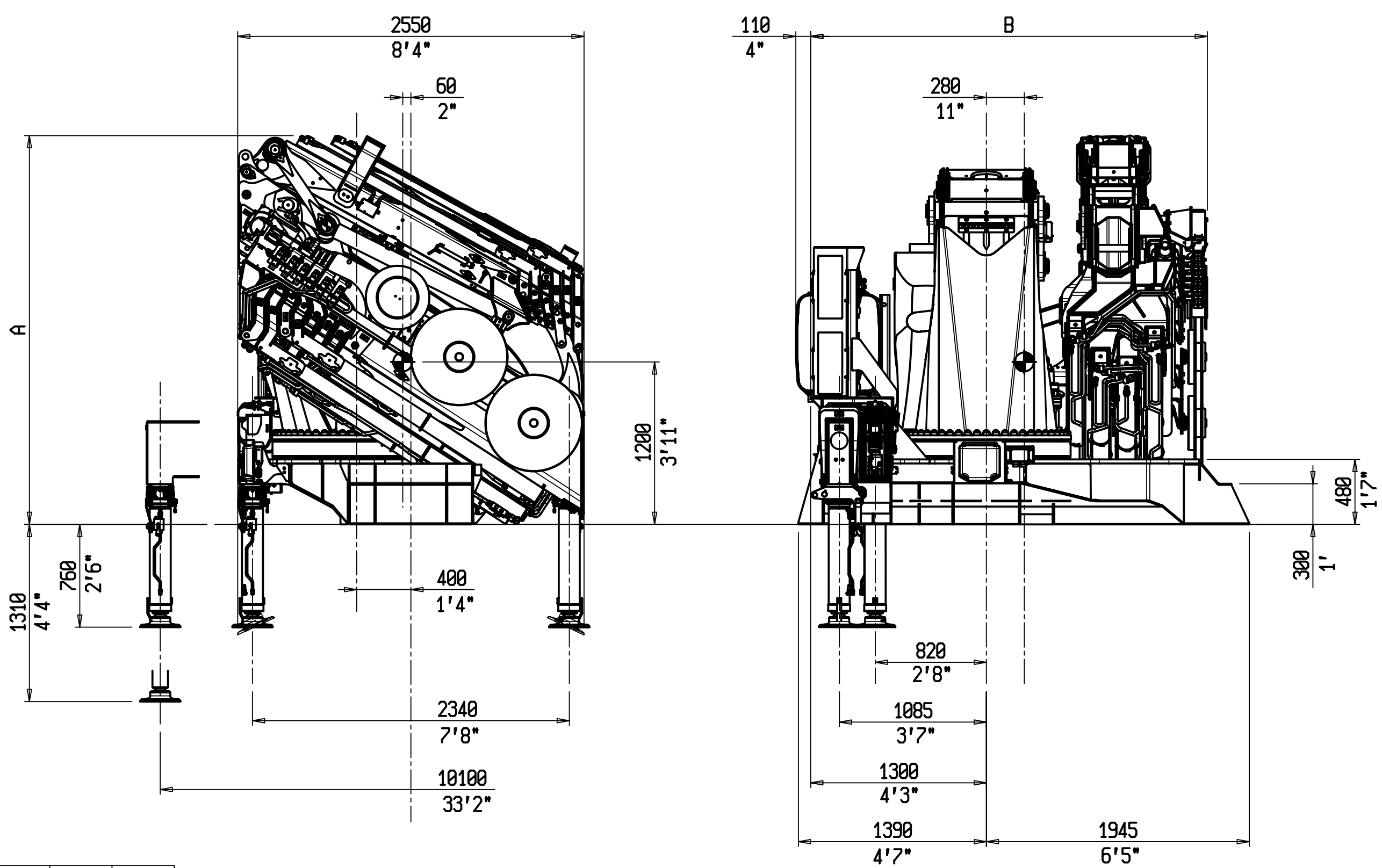
-  4° - 6060 lbs
-  3° - 6610 lbs
-  2° - 7300 lbs
-  1° - 8110 lbs

**** 150028 SP +J2416.20 +A80PM ** 188320**
 26/11/2014



A	mm	ft
Vers.24	2650	8'8"
Vers.26	2650	8'8"
Vers.28	2650	8'8"
Vers.29	2700	8'10"

B				
	mm	ft	mm	ft
Vers.24	2700	8'10"	----	----
Vers.26	2700	8'10"	----	----
Vers.28	2700	8'10"	2850	9'4"
Vers.29	2935	9'8"	----	----



A	mm	ft
150028 SP + J2416.25	2895	9'6"
150029 SP + J2016.25	2870	9'5"

B	mm	ft
150028 SP + J2416.25	2700	8'10"
150029 SP + J2016.25	2935	9'8"

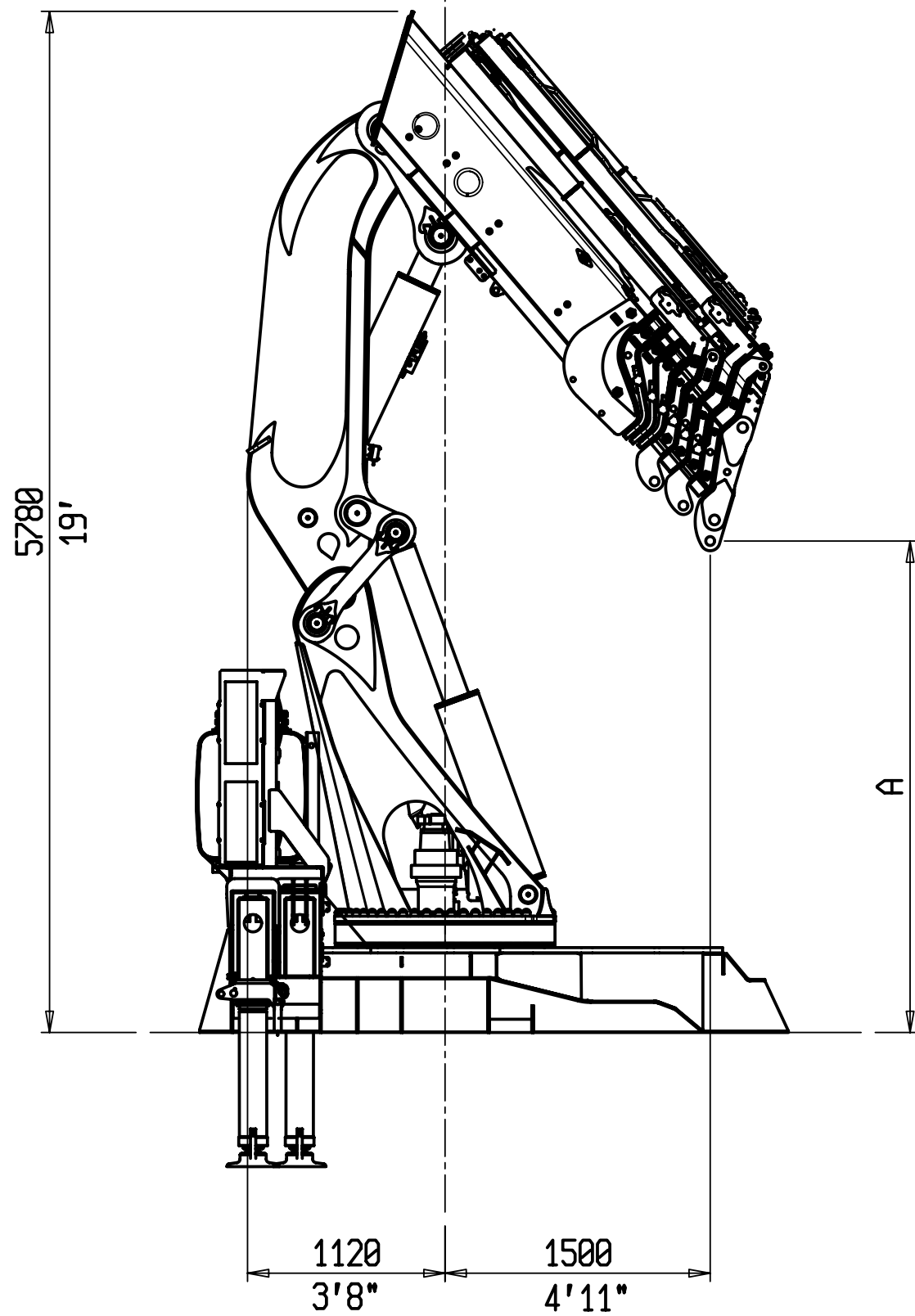
** PM 150 SP ** 188369
09/04/2014

1

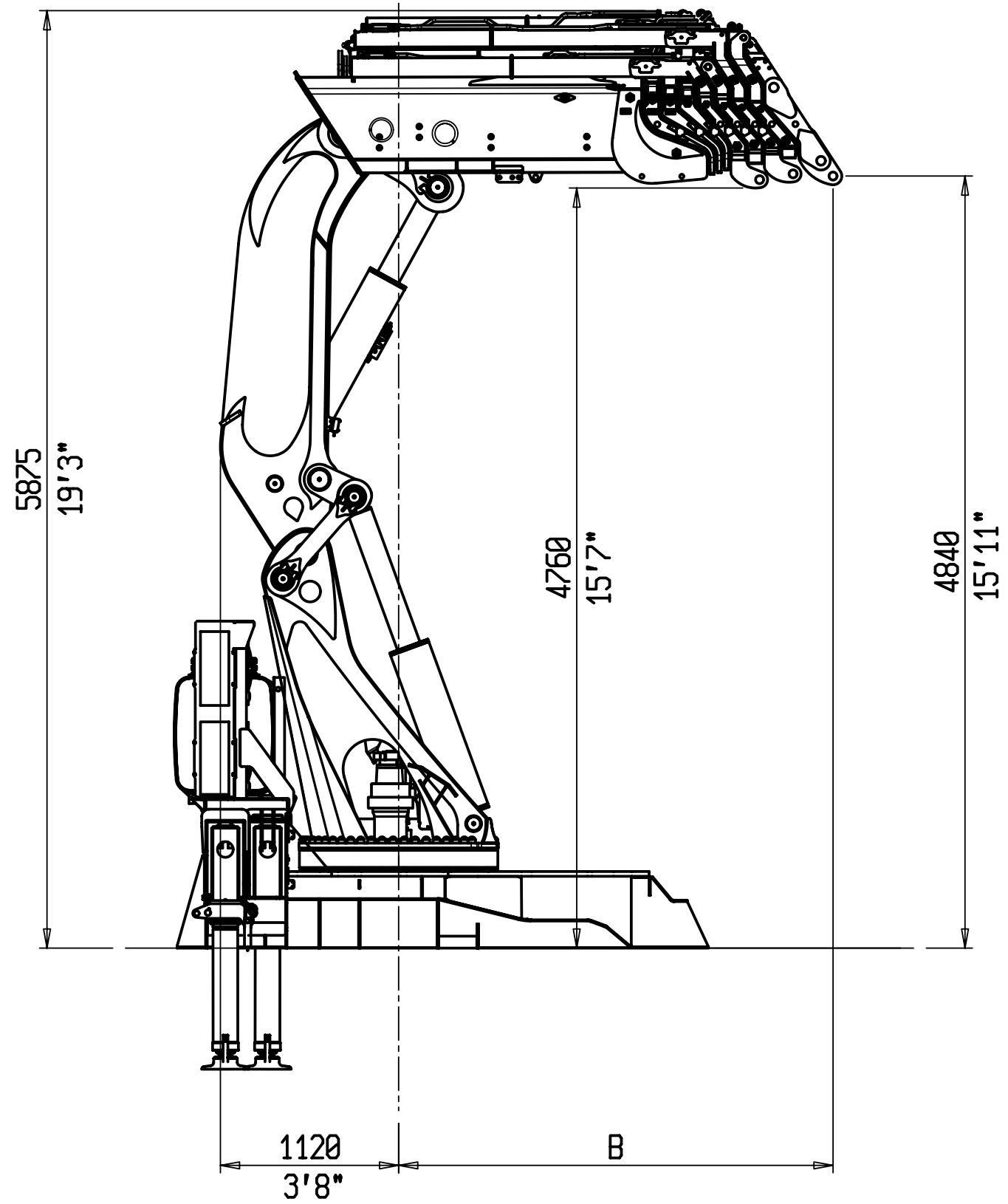
2

3

4



A	mm	ft
Vers.24	3360	11'
Vers.26	3090	10'2"
Vers.28	2780	9'1"
Vers.29	2775	9'1"



B	mm	ft
Vers.24	2260	7'5"
Vers.26	2400	7'10"
Vers.28	2725	8'11"
Vers.29	2730	8'11"

** PM 150 SP ** 188370

09/04/2014