

MANITEX ADDS VALUE

WITH MANITEX,
CRANES CAN BE
USED AS A LIFT
CRANE AND AN
AERIAL WORK
PLATFORM IN
THE SAME DAY!

ANNOUNCING NEW DUAL PURPOSE MACHINE

COME SEE THE ALL NEW
TC400/450/45142
AT ICUEE BOOTH N2019

A92.2 CERTIFICATION

Available now on the TC500/50155S/SHL and coming soon to the all new TC400/450/45142 being introduced at ICUEE Booth N2019

The dual-rating option can be ordered from factory or as upgrade to qualifying existing fleet. The A92.2 option includes lift crane and aerial platform operating modes, radio remote controls and "Quick Attach" personnel basket.

The new options eliminates the need for basket test weights, saving you valuable time and greatly increasing productivity.

PLEASE CONTACT YOUR REGIONAL BUSINESS MANAGER OR MANITEX PARTS DEPARTMENT FOR MORE INFORMATION.

ICUEE BOOTH
N2019



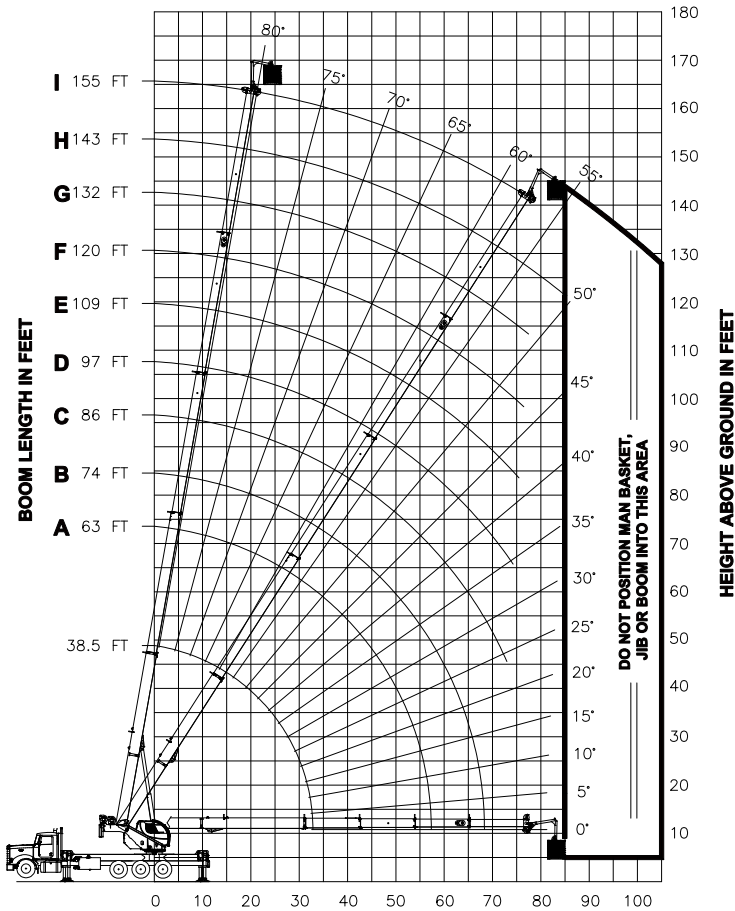
50155SHL

RANGE DIAGRAMS

1200 LBS. MAXIMUM BASKET CAPACITY

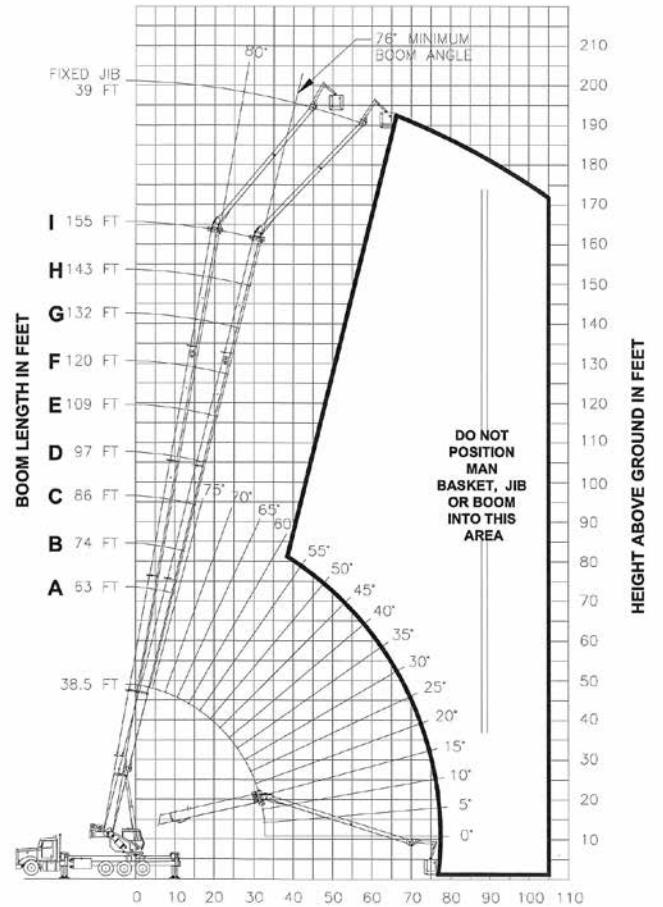
MAIN BOOM

Operating Code 25



FIXED JIB 30° OFFSET

Operating Code 26



OPERATING RADIUS FROM CENTERLINE OF ROTATION IN FEET

WARNING: OUTRIGGERS MUST BE FULLY DEPLOYED BEFORE OPERATING WITH A MANBASKET



Manitex, Inc.

3000 South Austin Avenue, Georgetown, TX 78626-7544

Phone: 512-942-3000 | Fax: 512-863-3776 | manitex.com | manitex-uptime.com