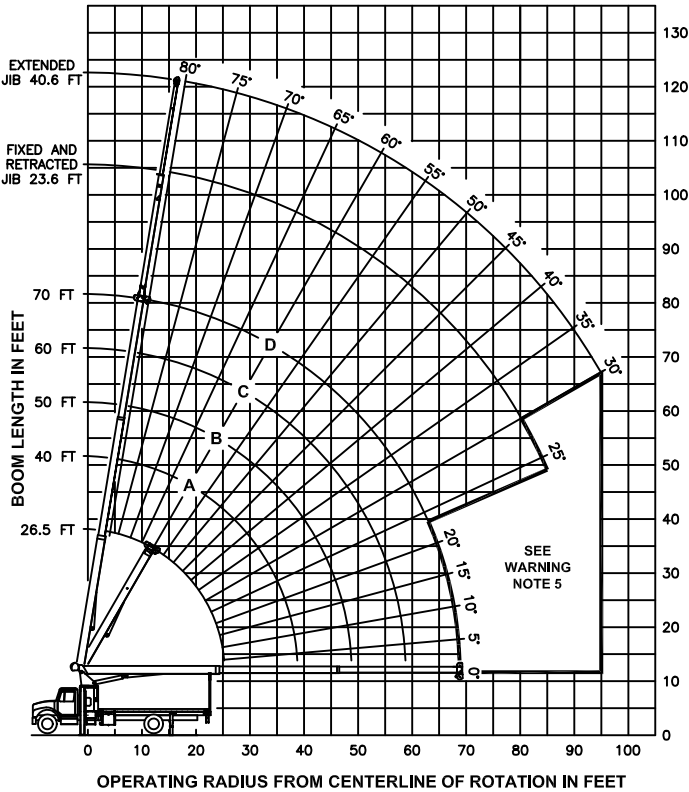


### RANGE DIAGRAM



### LOAD RATINGS IN LBS WITH OUTRIGGERS AND STABILIZERS EXTENDED

LMI CODE #1						JIB LOAD RATINGS IN LBS WITH OUTRIGGERS AND STABILIZERS EXTENDED										
BOOM LENGTH IN FEET	LOADED BOOM ANGLE	BOOM LENGTH AND MARKER				FIXED JIB				TELESCOPIC JIB						
		LMI CODE #1				LMI CODE #2		LMI CODE #3		LMI CODE #4						
		A	B	C	D	BOOM ANGLE	JIB LENGTH FOR ALL BOOM LENGTHS	BOOM ANGLE	JIB LENGTH FOR ALL BOOM LENGTHS	BOOM ANGLE	JIB LENGTH FOR ALL BOOM LENGTHS					
5	79	34000	40 FT	50 FT	60 FT	70 FT										
8	73	23930	79	22330												
10	68	20230	76	18670	80	18000										
12	63	17600	73	16100	77	15450	80	13420								
15	55	14420	69	13400	74	12780	77	11900	80	9400						
20	40	10350	61	10540	68	9970	72	9550	76	8180	20	80	4400	80	4200	
25	12	7830	52	8070	61	8130	67	7800	71	7000	25	78	4200	78	4000	
30			41	6400	54	6470	62	6510	67	6050	30	75	4000	75	3800	
35			28	5160	47	5240	56	5280	62	5280	35	71	3600	71	3380	
40					37	4200	50	4260	58	4300	40	68	3220	68	3010	
45					25	3360	43	3420	52	3460	45	65	2880	65	2650	
50							35	2790	47	2820	50	61	2580	61	2340	
55							24	2290	40	2330	55	57	2310	57	2060	
60										33	1930	60	53	2020	53	1790
65										23	1600	65	49	1690	49	1460
70											70	45	1410	45	1180	
75											75	40	1180	40	950	
80											80	34	980	34	750	
85											85	27	810	27	570	
90											90				49	700
95											95				34	560
						350 LBS	240 LBS	190 LBS	160 LBS	140 LBS	DEDUCTIONS FOR STOWED FIXED JIB					
						530 LBS	350 LBS	280 LBS	240 LBS	200 LBS	DEDUCTIONS FOR STOWED TELESCOPIC JIB					

### WARNING

- THE OPERATOR MUST READ AND UNDERSTAND THE OWNER'S MANUAL BEFORE OPERATING THIS CRANE.
- POSITIONING OR OPERATION OF CRANE BEYOND AREAS SHOWN ON THIS CHART IS NOT INTENDED OR APPROVED EXCEPT WHERE SPECIFIED IN OWNER'S MANUAL.
- LOADED BOOM ANGLES AT SPECIFIED BOOM LENGTHS GIVE ONLY AN APPROXIMATION OF THE OPERATING RADIUS. THE BOOM ANGLE BEFORE LOADING SHOULD BE GREATER TO ACCOUNT FOR DEFLECTIONS. DO NOT EXCEED THE OPERATING RADIUS FOR RATED LOADS.
- THE OPERATING RADIUS SHOWN IN THE JIB RATING CHART IS FOR FULLY EXTENDED BOOM ONLY. WHEN BOOM IS NOT FULLY EXTENDED, USE ONLY LOADED BOOM ANGLE TO DETERMINE LOAD RATING OF JIB.
- BOOM MUST BE FULLY RETRACTED WHEN JIB IS ERECTED, BEFORE LOWERING BOOM THROUGH THIS AREA.
- FOR BOOM ANGLES NOT SHOWN ON JIB LOAD RATING CHART, USE RATING OF NEXT LOWER BOOM ANGLE.
- FOR BOOM LENGTHS NOT SHOWN, USE RATING OF NEXT LONGER BOOM LENGTH. FOR RADII NOT SHOWN, USE RATING OF NEXT LONGER RADIUS.
- CRANE LOAD RATINGS ON OUTRIGGERS ARE BASED ON FREELY SUSPENDED LOADS WITH THE MACHINE LEVELLED AND STANDING ON A FIRM UNIFORM SUPPORTING SURFACE. NO ATTEMPT SHALL BE MADE TO MOVE A LOAD HORIZONTALLY ON THE GROUND IN ANY DIRECTION.
- PRACTICAL WORKING LOADS DEPEND ON SUPPORTING SURFACE, WIND, AND OTHER FACTORS AFFECTING STABILITY SUCH AS HAZARDOUS SURROUNDINGS, EXPERIENCE OF PERSONNEL, AND PROPER HANDLING, ALL OF WHICH MUST BE TAKEN INTO ACCOUNT BY THE OPERATOR.
- THE MAXIMUM LOAD WHICH MAY BE TELESCOPED IS LIMITED BY HYDRAULIC PRESSURE, BOOM ANGLE, AND BOOM LUBRICATION. IT IS SAFE TO ATTEMPT TO TELESCOPE ANY LOAD WITHIN THE LIMITS OF THE LOAD RATING CHART. BOOM MUST BE FULLY RETRACTED AGAINST BOOM STOPS AT ALL TIMES WHEN LIFTING MINIMUM BOOM LENGTH CAPACITY LOADS.

### DEFINITIONS

- DEDUCTIONS MUST BE MADE FROM RATED LOADS FOR STOWED JIB, OPTIONAL ATTACHMENTS, HOOKS, AND LOADBLOCKS (SEE DEDUCTION CHART). WEIGHTS OF SLINGS AND ALL OTHER LOAD HANDLING DEVICES SHALL BE CONSIDERED A PART OF THE LOAD.
- CRANE LOAD RATINGS WITH OUTRIGGERS ARE BASED ON OUTRIGGERS AND STABILIZERS EXTENDED AND SET WITH MACHINE LEVELLED.
- LOAD RATINGS ABOVE THE HEAVY LINE ARE STRUCTURALLY LIMITED CAPACITIES. LOAD RATINGS BELOW THE HEAVY LINE ARE STABILITY LIMITED CAPACITIES AND DO NOT EXCEED 85% OF TIPPING.

### DEFINITIONS

- OPERATING RADIUS IS THE HORIZONTAL DISTANCE FROM THE AXIS OF ROTATION TO THE CENTER OF THE VERTICAL HOIST LINE OR TACKLE WITH LOAD APPLIED.
- LOADED BOOM ANGLE AS SHOWN IN THE COLUMN HEADED BY  $\angle$  IS THE INCLUDED ANGLE BETWEEN THE HORIZONTAL AND LONGITUDINAL AXES OF THE BOOM BASE AFTER LIFTING RATED LOAD AT RATED RADIUS.

### LMI OPERATING CODES

SETTING	CRANE CONFIGURATION	SETTING	CRANE WITH PERSONNEL LIFTING PLATFORM
#1	MAIN BOOM	#5	PERSONNEL LIFTING PLATFORM ON MAIN BOOM
#2	FIXED JIB	#6	PERSONNEL LIFTING PLATFORM ON FIXED JIB
#3	TELE JIB - RETRACTED	#7	PERSONNEL LIFTING PLATFORM ON TELE JIB - RETRACTED
#4	TELE JIB - EXTENDED		WARNING: LIFTING PERSONNEL FROM EXTENDED JIB IS NOT APPROVED

### ALLOWABLE LINE PULL

1 PART LINE	2 PART LINE	3 PART LINE	4 PART LINE
8500 LBS	17000 LBS	25500 LBS	34000 LBS
7400 LBS	14800 LBS	22200 LBS	29600 LBS

### WARNING

ANTI-TWO-BLOCK SYSTEM MUST BE IN GOOD OPERATING CONDITION BEFORE OPERATING CRANE. REFER TO OWNER'S MANUAL.

KEEP AT LEAST 3 WRAPS OF LOAD LINE ON DRUM AT ALL TIMES.

9/16" - 6X25 IWRC (3.5:1 S.F.)  
29750 LBS. BREAKING STRENGTH  
9/16" ROT RESISTANT (5.0:1 S.F.)  
37000 LBS. BREAKING STRENGTH

### DEDUCTIONS FROM RATED LOADS FOR LOAD HANDLING DEVICES SUPPLIED BY MANITEX

OVERHAUL BALL	-----	SEE OVERHAUL BALL MFG. NAMEPLATE LOAD BLOCKS
LOAD BLOCKS	-----	SEE BLOCK MFG. NAMEPLATE
HOSE REEL	-----	160 LBS
SWING AROUND JIB	-----	SEE LOAD CHART

### WARNING

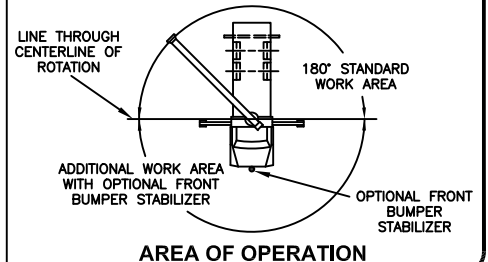
LIFTING OFF THE MAIN BOOM POINT WHILE THE JIB IS ERECTED IS NOT INTENDED OR APPROVED.

**Manitex**

MODELS  
1770C & 1770T

CRANE MEETS ANSI B30.5 REQUIREMENTS

7300086-007 NR



AREA OF OPERATION