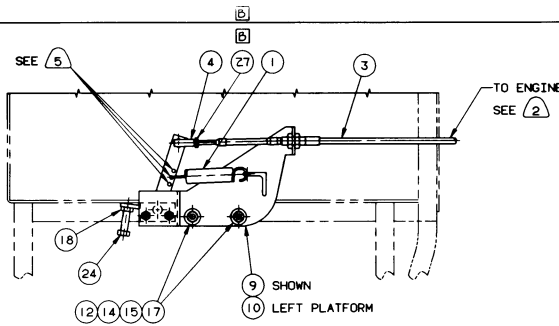
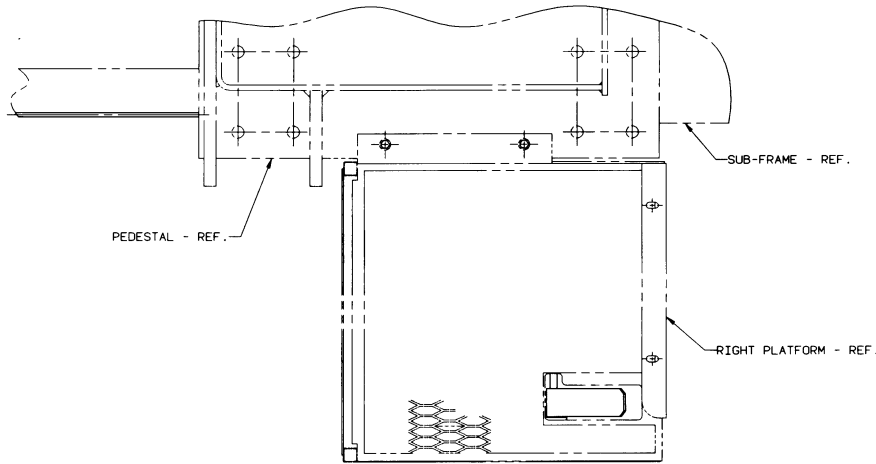


SECTION "A"-"A"



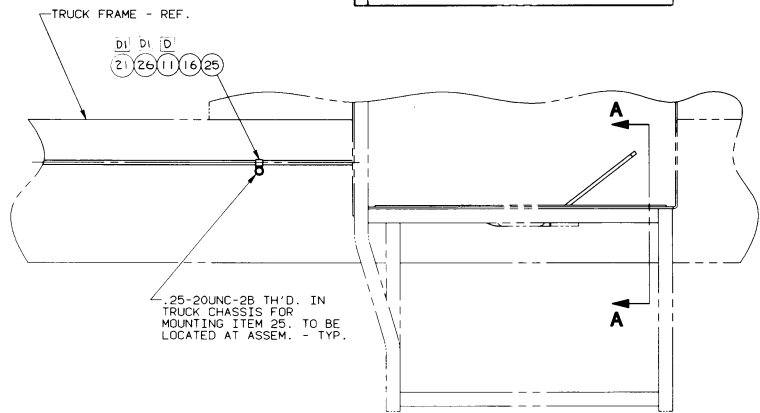
VIEW "B"-"B"



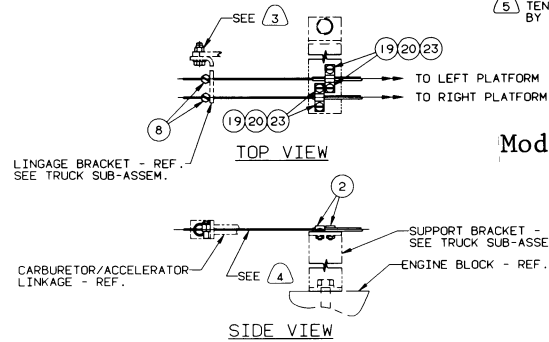
PEDESTAL - REF.

SUB-FRAME - REF.

RIGHT PLATFORM - REF.



.25-20UNC-2B TH'D. IN TRUCK CHASSIS FOR MOUNTING ITEM 25. TO BE LOCATED AT ASSEM. - TYP.



LINKAGE BRACKET - REF. SEE TRUCK SUB-ASSEM.

CARBURETOR/ACCELERATOR LINKAGE - REF.

BILL OF MATERIAL					REVISED	DATE
ITEM NO.	DESCRIPTION	MATERIAL	QTY	UNIT	REV.	DATE
1	2 SPRING	4000170-001	.12			
2	CABLE CLAMP	4000206-101	.01			
3	THROTTLE CABLE	4000230-001	2.0			
4	BALL JOINT CONNECTOR	4000231-001	.02			
5	THROTTLE PEDAL - L.H.	5000697-001	1.7			
6	THROTTLE PEDAL - R.H.	5000698-001	2.4			
7	BLOCK	5000700-001	.02			
8	CABLE STOP	4000207-002	.02			
9	THROTTLE BRACKET - R.H.	5000840-001	1.2			
10	THROTTLE BRACKET - L.H.	5000841-001	1.2			
11	4.25-20UNC-2A X 1.00 LG. GR 5 BOLT	2004-041016	.02			
12	4.3125-18UNC-2A X .88 LG. GR 5 BOLT	2004-051014	.03			
13	2.25-28UNF-2B HEX JAM NUT	2010-042000	.01			
14	4.3125-18UNC-2B HEX NUT	2005-051000	.02			
15	4.3125 LOCKWASHER	2006-050000	.01			
16	1/2 .25 S.A.E. FLAT WASHER	2008-040000	.01			
17	4.3125 S.A.E. FLAT WASHER	2008-050000	.01			
18	2.375-16UNC-2B HEX JAM NUT	2010-061000	.01			
19	4#10-24UNC-2B HEX NUT	2018-101000	.01			
20	4#10 LOCKWASHER	2020-100000	.01			
21	1/2 .25 LOCKWASHER	2006-040000	.01			
22	8.25-20UNC-2A X 1.50 LG. GR 5 BOLT	2004-041024	.03			
23	4#10-24UNC-2A X .63 LG. SLOTTED PAN HD SCR	2027-101010	.01			
24	2.375-16UNC-2A X 1.50 LG. GR 5 BOLT	2004-061024	.06			
25	4 HOSE SUPPORT CLAMP	30140-04-00	.02			
26	1/2 .25-20UNC-2B HEX NUT	2005-041000	.01			
27	2#10-32 UNF-2B HEX NUT	2018-102000	.02			
TOTAL ASSEMBLY WEIGHT (LBS.)				12.4		

- 1 INSTALLATION FOR RIGHT PLATFORM SHOWN. INSTALLATION FOR LEFT PLATFORM SIMILAR.
- 2 ROUTE THE CABLE TO THE ENGINE IN A MANNER IN WHICH IT CANNOT GET ENTTANGLED IN MOVING PARTS OF THE TRUCK. DO NOT LET THE CABLE SAG BELOW THE TRUCK FRAME. IT COULD GET TANGLED WITH OBJECTS BEING DRIVEN OVER. DO NOT LET THE CABLE COME IN CONTACT WITH HOT ENGINE OR EXHAUST COMPONENTS. MIN. BEND RADIUS FOR CABLE IS 6.00 IN.
- 3 DO NOT TIGHTEN NUT. LINKAGES MUST BE FREE TO MOVE INDEPENDENTLY.
- 4 WIRE MUST RUN STRAIGHT BETWEEN END OF CASING AND ATTACHMENT TO ENGINE THROTTLE LINKAGE. IDEALLY, THE MOTION OF THE LINKAGE BRACKET SHOULD NOT CAUSE THIS WIRE TO BEND IN ANY DIRECTION.
- 5 TENSION MAY BE ADJUSTED TO OPERATOR PREFERENCE BY INSTALLING SPRING IN OTHER HOLES.

Model 900 S/N 90001 & UP  
 1100 S/N 11067 & UP  
 1400, 1500, 1700, 1900  
 2200, 2800 & 2500

THIS PRINT REMAINS THE PROPERTY OF MANITEX INC.		TOLERANCE UNLESS OTHERWISE SPECIFIED		SCALE	DATE	REV.	BY	CHECKED	APPROVED
DECIMAL PLACES	FRACTIONS	ANGLES	WELDING	3/4" = 1"					
ALL DIMENSIONS UNLESS OTHERWISE SPECIFIED ARE IN INCHES.	1/16" PLACE ±.0005	1/32" PLACE ±.0005	1/8" PLACE ±.0005	1" PLACE ±.005	DATE	REV.	BY	CHECKED	APPROVED
IF IT IS LARGER, SUBJECT TO RETURN (UPON ORDER) AND ON EXPRESS CONDITION THAT IT IS NOT TO BE COPIED OR USED CORRECTLY OR INCORRECTLY IN ANY MANNER WITHOUT THE WRITTEN PERMISSION OF MANITEX INC.	1/16" PLACE ±.0005	1/32" PLACE ±.0005	1/8" PLACE ±.0005	1" PLACE ±.005	DATE	REV.	BY	CHECKED	APPROVED

MANITEX INC.	THROTTLE INSTALLATION
A SUBSIDIARY OF THE MANITEX COMPANY, INC.	ASSEMBLY
SEE 1	6000248