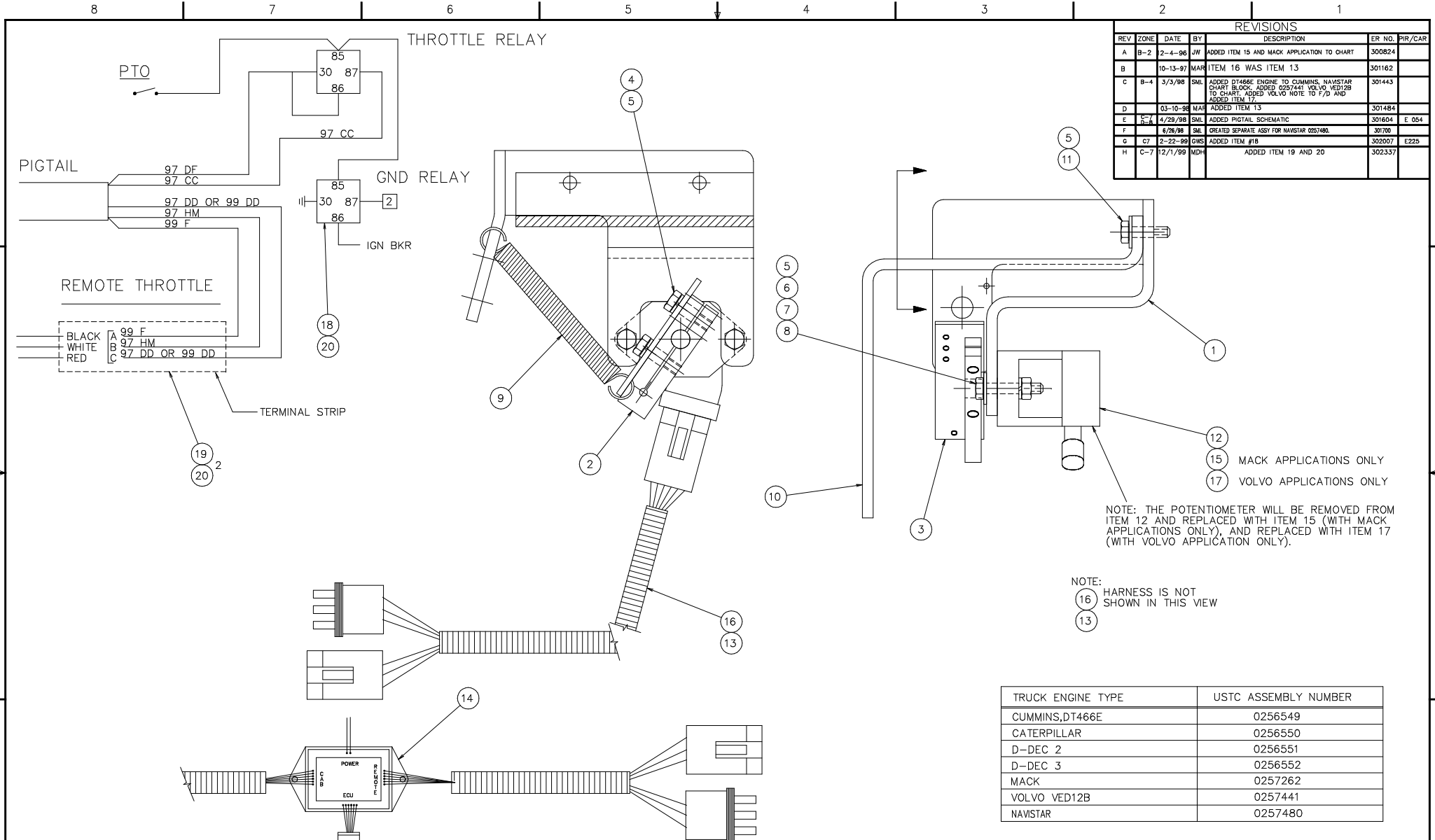


REVISIONS						
REV	ZONE	DATE	BY	DESCRIPTION	ER NO.	PIR/CAR
A	B-2	2-4-96	JW	ADDED ITEM 15 AND MACK APPLICATION TO CHART	300824	
B		10-13-97	MAR	ITEM 16 WAS ITEM 13	301162	
C	B-4	3/3/98	SML	ADDED DT466E ENGINE TO CUMMINS, NAVISTAR CHART BLOCK. ADDED 0257441 VOLVO, VED12B TO CHART. ADDED VOLVO NOTE TO F/D AND ADDED ITEM 17.	301443	
D		03-10-98	MAR	ADDED ITEM 13	301484	
E	C-7	4/29/98	SML	ADDED DIGITAL SCHEMATIC	301604	E 054
F		6/26/98	SML	CREATED SEPARATE ASSY FOR NAVISTAR 0257480.	301700	
G	C7	2-22-99	GWS	ADDED ITEM #18	302007	E225
H	C-7	12/1/99	MDH	ADDED ITEM 19 AND 20	302337	



SPECIFICATIONS		DIMENSIONAL TOLERANCES UNLESS OTHERWISE SPECIFIED				JLG INDUSTRIES INC. MATERIAL HANDLING DIVISION	
1. TORQUE ALL ITEMS DESIGNATED WITHIN A CLIPPER JLG TORQUE SPECS SPECIFIED ON THE B.O.M.		DIMENSIONS	0 TO 24"	24" TO 72"	72" TO 300"	> 300"	DRAWN BY: JOE W. DATE: 9-26-95 ASSOC. DRAWING:
2. ALL STRUCTURAL WELDING TO CONFORM TO APPLICABLE STRUCTURAL WELDING CODES. UNLESS OTHERWISE SPECIFIED, ALL DIMENSIONS ARE IN INCHES.		FRACTIONAL	+/- 1/16"	+/- 1/8"	+/- 1/8"	+/- 1/2"	SCALE: 1:1 WEIGHT: PROJECT:
		DECIMAL	+/- .010	+/- .020	+/- .020	+/- .020	MATERIAL: THIRD ANGLE PROJECTION ER NO. 300357
		ANGLES	+/- 2 DEGREES				HEAT TREATMENT: (SEE NOTE IF APPLICABLE) APPLIES U.O.S. REV. H 1 OF 1
		SURFACE FINISH SPECIFIED WITH		√125 MICRO INCHES R _a MAX.		TITLE: CHART, THROTTLE ASSEMBLY 1282599	