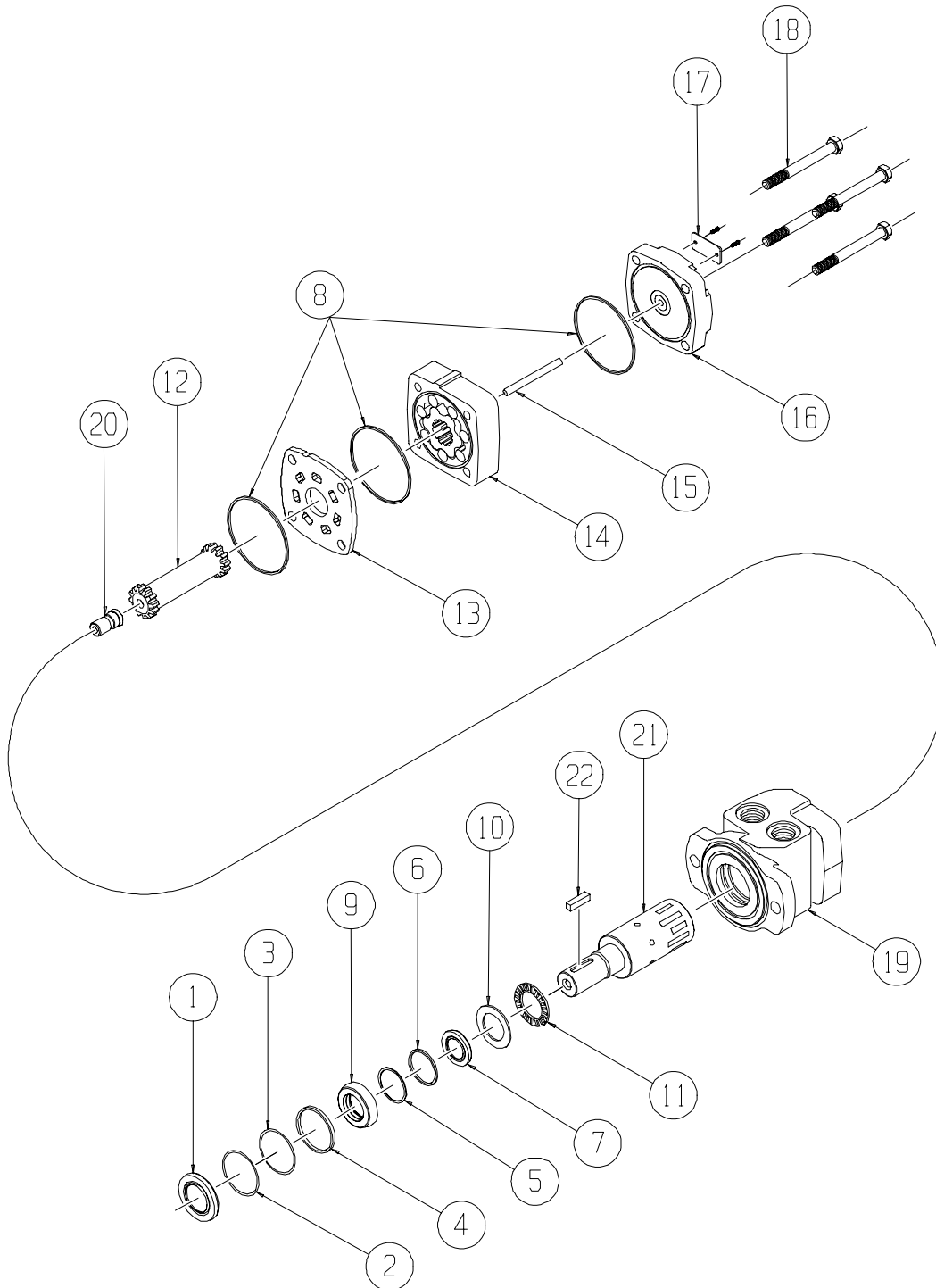


Manitowoc Boom Trucks



Hydraulic Motor Swing

Manitowoc Boom Trucks

Hydraulic Motor Swing 4000072-00X

ITEM	PART #	QTY	DESCRIPTION
	4000072-501 *		SEAL KIT, Motor (Tag dated before 090-8)
	4000072-503 *		SEAL KIT, Motor (Tag dated after 091-8)
1	*	1	SEAL, Dust
2	*	1	RING, Split Wire
3	*	1	BACK-UP, Metal Shim
4	*	1	SEAL, High Pressure
5	*	1	BACK-UP, Metal Shim
6	*	1	BACK-UP, Teflon Shim
7	*	1	SEAL, Shaft
8	*	3	SEAL, Body
9		1	SEAL CARRIER
10		1	THRUST WASHER
11		1	THRUST BEARING
12		1	DRIVE LINK
13		1	WEAR PLATE
14		1	ROTOR ASSEMBLY
15		1	DRIVE LINK PIN
16		1	END COVER
17		1	TAG
18		4	BOLT
19		1	HOUSING
20		1	COOLING PLUG
21		1	SHAFT
22		1	SHAFT KEY
	4000072-502		SEAL KIT, Manifold (Not used on -005) not shown
			4000072-001 For Models: 1100, 1400, 1003-1703
			4000072-002 For Models: 900 M900
			continued

Hydraulic Motor Swing

4000072-00X

Manitowoc Boom Trucks

Hydraulic Motor Swing 400072-00X			
ITEM	PART #	QTY	DESCRIPTION
			400072-003 For Models: 1200, 1500, 1501, 1700, 1800, 1900, 2200, & 2500 M1400 thru M2500 and S-Series 400072-004 For Models: 2800, 3000 M3000 400072-005 For Models: C3500

Hydraulic Motor Swing