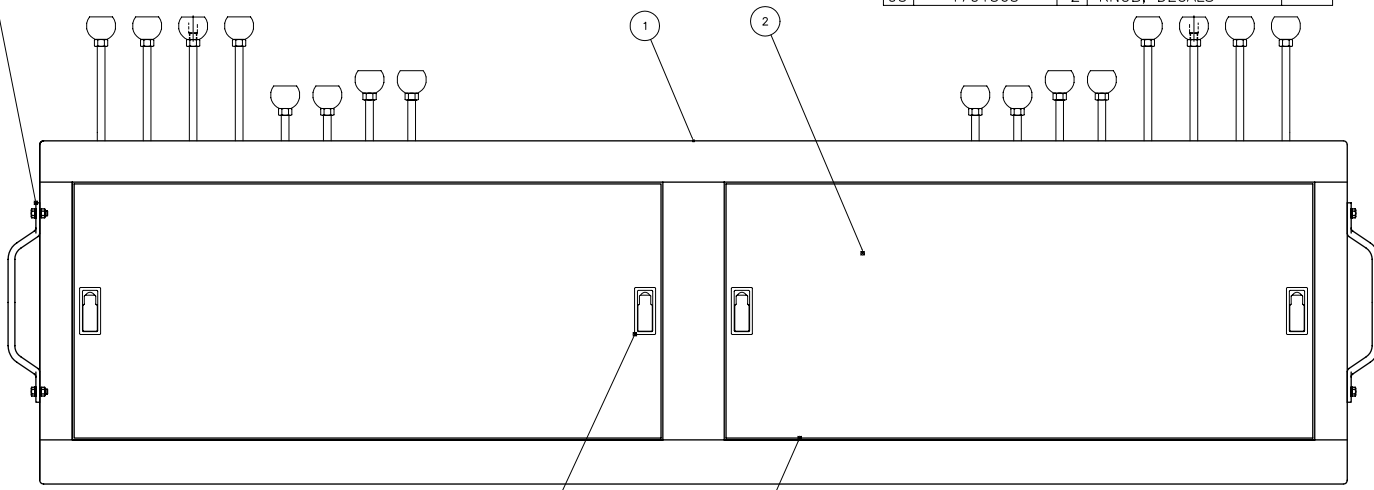


49
48
47
45
44



| | | | | |
|----|-------------|----|-------------------|---|
| 59 | 4760600 | 6 | LOCKWASHER #6 | - |
| 60 | 3310601 | 6 | HEX NUT | - |
| 61 | 3311402 | 14 | JAM NUT .25 | - |
| 62 | | 2 | JAM NUT | - |
| 63 | 2940091 | 4 | DOOR LATCH | - |
| 64 | 4220300 | 1 | SWING STOP ROD | - |
| 65 | | 1 | VINYL TRIM | - |
| 66 | 2220967 | 4 | ADAPTER, STRAIGHT | - |
| 67 | 2221291 | 2 | 90 O-RING BOSS | - |
| 68 | 2220960 | 8 | ADAPTER | - |
| 69 | 4900015-003 | 1 | SHUTTLE VALVE | - |
| 70 | 2220235 | 1 | ADP PLUG SAE | - |
| 71 | 2221163 | 2 | 90 ADAPTER | - |
| 72 | 2221164 | 1 | BOSS ADAPTER | - |
| 73 | 2220972 | 2 | 45 ADAPTER | - |
| 74 | 2220971 | 4 | 90 ADAPTER | - |
| 75 | 2221225 | 1 | REDUCER | - |
| 76 | 2221162 | 2 | ADAPTER | - |
| 77 | 2753423 | 1 | HOSE ASSY | - |
| 78 | 2753424 | 1 | HOSE ASSY | - |
| 79 | 2753425 | 1 | HOSE ASSY | - |
| 80 | 2753426 | 1 | HOSE ASSY | - |
| 81 | 2753427 | 1 | HOSE ASSY | - |
| 82 | 2753428 | 1 | HOSE ASSY | - |
| 83 | 30489-12-05 | 1 | CHECK VALVE | - |
| 84 | 4000269-003 | 2 | SNAP PLUG | - |
| 85 | 2221226 | 2 | REDUCER | - |
| 86 | 2220238 | 2 | PLUG | - |
| 87 | 2221266 | 1 | ADAPTER | - |
| 88 | 2221300 | 1 | ADAPTER | - |
| 89 | 2221302 | 1 | ADAPTER | - |
| 90 | 2220968 | 1 | ADAPTER | - |
| 91 | 2221304 | 1 | ADAPTER | - |
| 92 | 4000294-001 | 1 | PRESSURE, DECAL | - |
| 93 | 4000233-001 | 2 | HORN, DECAL | - |
| 94 | 4000232-003 | 2 | START/STOP DECAL | - |
| 95 | 1701565 | 2 | KNOB, DECALS | - |

| BILL OF MATERIAL | | | | | REVISIONS |
|------------------|-------------|-----|------------------------|-------------|---------------------|
| ITEM NO. | PART NUMBER | QTY | DESCRIPTION | UNIT WEIGHT | |
| 1 | 4845833 | 1 | CONSOLE WELDMENT | - | EN 302491 |
| 2 | 1780400 | 2 | CONSOLE DOOR | - | JW 10-4-00 |
| 3 | 4900058-008 | 1 | MAIN VALVE | - | NEW RELEASE |
| 4 | 4900057-003 | 1 | HOIST VALVE | - | EN 00-0011 07 |
| 5 | 0561044 | 8 | MOUNTING BLOCK | - | JW 12-20-00 |
| 6 | 0362143 | 4 | BAR SUPPORT | - | A1 |
| 7 | 0561043 | 4 | MOUNTING BLOCK | - | 67 WAS 30289.08.08 |
| 8 | 0362000 | 2 | BAR SUPPORT | - | 68 WAS 2221238 |
| 9 | 0630480 | 12 | CARRIAGE BOLT | - | 71 WAS 2220968 |
| 10 | 4761400 | 16 | LOCKWASHER .25 | - | 72 WAS 30205.04.06 |
| 11 | 3311401 | 16 | HEX NUT .25 | - | 73 WAS 30205.16.12 |
| 12 | 4845784 | 1 | CONTROL ROD | - | 74 WAS 2221161 |
| 13 | 4845785 | 1 | CONTROL ROD | - | 75 WAS 30210.16.16 |
| 14 | 4845786 | 1 | CONTROL ROD | - | 76 WAS 30212.16.16 |
| 15 | 4845787 | 1 | CONTROL ROD | - | 85 WAS 2753429 |
| 16 | 4845788 | 1 | CONTROL ROD | - | 86 WAS 2753430 |
| 17 | 4845789 | 1 | CONTROL ROD | - | 87 WAS 2753431 |
| 18 | 4845790 | 1 | CONTROL ROD | - | 88 WAS 2753432 |
| 19 | 4845791 | 1 | CONTROL ROD | - | 89 WAS 2753433 |
| 20 | 3841455 | 1 | CONNECTING ROD | - | 91 WAS 2753434 |
| 21 | 3841456 | 1 | CONNECTING ROD | - | 92 WAS 2753435 |
| 22 | 3841457 | 1 | CONNECTING ROD | - | DELETED 92 & 93 |
| 23 | 3841458 | 1 | CONNECTING ROD | - | EN 01-0001 07 |
| 24 | 3841459 | 1 | CONNECTING ROD | - | JW 01-25-01 |
| 25 | 3841460 | 1 | CONNECTING ROD | - | ITEM 85 WAS 2221301 |
| 26 | 3841461 | 1 | CONNECTING ROD | - | EN 01-0005 06 |
| 27 | 3841462 | 1 | CONNECTING ROD | - | JW 5-21-01 |
| 28 | 148085 | 8 | YOKE END ASSY. | - | FC1 |
| 29 | 1360126 | 2 | YOKE END ASSY. | - | ADDED ITEMS 92-95 |
| 30 | 3430306 | 8 | PIN | - | #28, 30 & 31 WAS |
| 31 | 3450203 | 8 | COTTER PIN | - | QTY. 7 |
| 32 | 2560108 | 14 | HANDLE KNOB | - | |
| 33 | 2560113 | 2 | HANDLE KNOB RWK | - | |
| 34 | 3311802 | 16 | HEX JAM NUT .50 | - | |
| 35 | 4360308 | 2 | SWITCH | - | |
| 36 | 4567515 | 2 | VALVE MTG. TUBE | - | |
| 37 | 0641620 | 6 | H.H.C.S. .38 X 2.5 LG. | - | |
| 38 | 4711600 | 13 | FLATWASHER .38 | - | |
| 39 | 4761600 | 13 | LOCKWASHER | - | |
| 40 | 3311601 | 13 | HEX NUT | - | |
| 41 | 5001754-001 | 1 | SWITCH BRACKET | - | |
| 42 | 5001756-001 | 1 | SWITCH BAR | - | |
| 43 | 0641508 | 6 | H.H.C.S. .31 X 1.0 LG | - | |
| 44 | 4761500 | 6 | LOCKWASHER | - | |
| 45 | 4711500 | 6 | FLATWASHER | - | |
| 46 | 0641612 | 7 | H.H.C.S. | - | |
| 47 | 4000105-001 | 2 | GRAB HANDLE | - | |
| 48 | 0641505 | 4 | H.H.C.S. .31 X .62 LG | - | |
| 49 | 0641512 | 4 | H.H.C.S. .31 X 1.5 LG. | - | |
| 50 | 4900132-004 | 1 | PRESSURE GAUGE | - | |
| 51 | 4420008 | 8 | TAPE | - | |
| 52 | 3571471 | 1 | MOUNTING BRACKET | - | |
| 53 | 0630661 | 4 | CARRIAGE BOLT | - | |
| 54 | 0901760 | 2 | GAUGE HOLDER | - | |
| 55 | 2420140 | 2 | LEVEL GAUGE | - | |
| 56 | 4160103 | 6 | 3-WAVE SPRING | - | |
| 57 | 0902556 | 2 | BRACKET SHIM | - | |
| 58 | 3910620 | 6 | RD. HD. S.#6 X 1.25 | - | |

DOCUMENT CONTROL STATUS:
ELECTRONIC FILE = CONTROLLED
HARDCOPY = UNCONTROLLED

Manitowoc Boom Trucks, Inc.
A MANITOWOC COMPANY

SCALE: 1/4
DRAWN: JW
CHECKED: []
APPROV./DATE: []

CONTROL CONSOLE ASSEMBLY

TOLERANCES (UNLESS SPECIFIED) 0257743

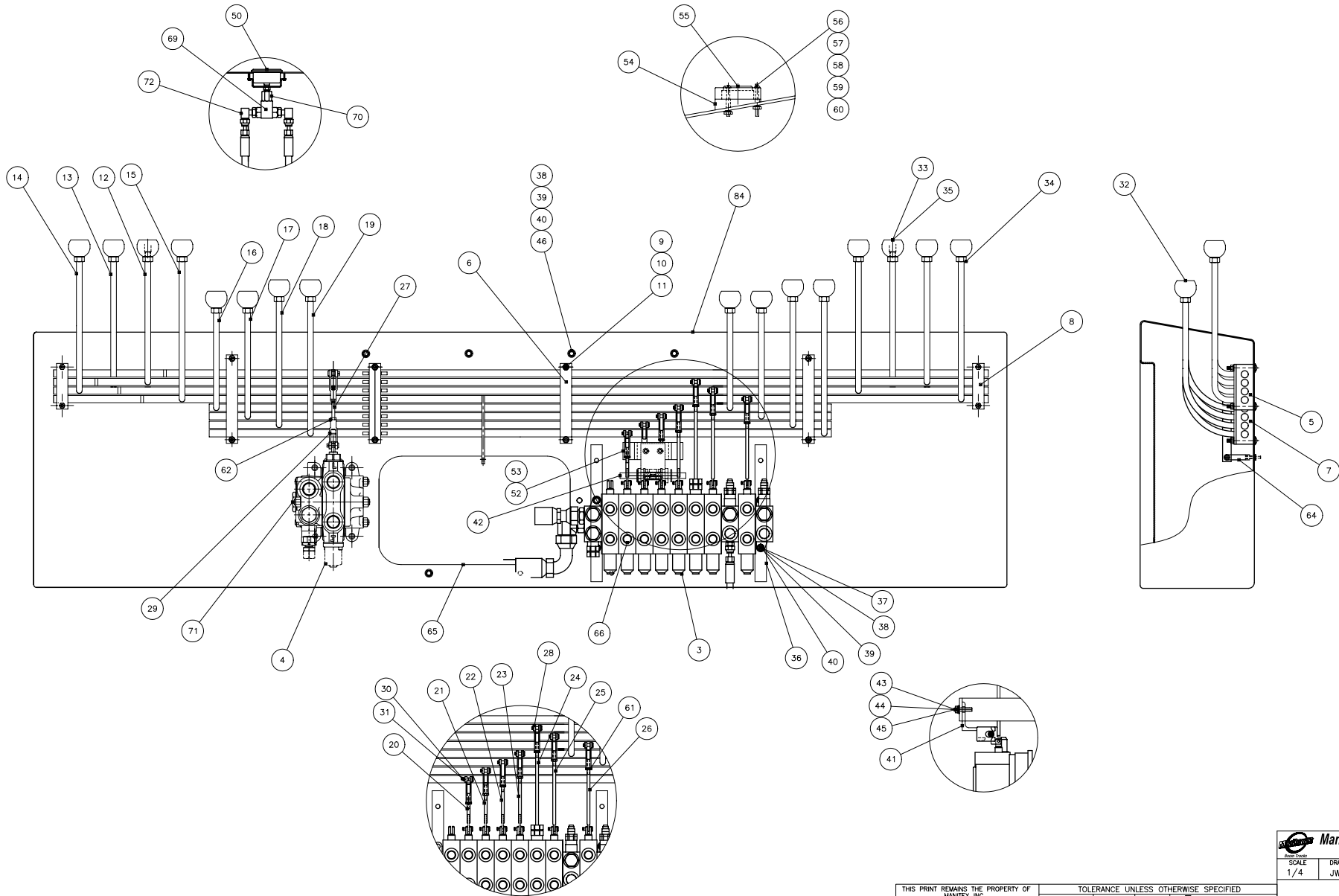
SHEET 1 OF 3

THIS PRINT REMAINS THE PROPERTY OF MANITEX INC.

ALL INFORMATION CONTAINED HEREON IS CONFIDENTIAL. IT IS LOANED, SUBJECT TO RETURN UPON AND ON EXPRESS CONDITION THAT IT IS NOT TO BE COPIED OR USED DIRECTLY OR INDIRECTLY IN ANY WAY WHATSOEVER DETRIMENTAL TO OUR INTERESTS.

| TOLERANCE UNLESS OTHERWISE SPECIFIED | | |
|--------------------------------------|-------------|-----------|
| DECIMAL PLACES | FABRICATION | MACHINING |
| (1) PLACE 0.0 | ± 0.120 | ± 0.030 |
| (2) PLACE 0.00 | ± 0.060 | ± 0.015 |
| (3) PLACE 0.000 | ± 0.030 | ± 0.005 |
| ANGLES | ± 1° 30' | ± 0° 30' |

1) √ = MACHINING TOLERANCE APPLIES TO THIS DIMENSION AND/OR SURFACE.
2) √ = INDICATES A TOLERANCE OTHER THAN INDICATED BY ORIGINAL DECIMAL DIMENSION.
EXAMPLE: .750 ± .005 USE ONE DECIMAL PLACE TOLERANCE.



DOCUMENT CONTROL STATUS:
ELECTRONIC FILE = CONTROLLED
HARDCOPY = UNCONTROLLED

Manitowoc Boom Trucks, Inc.
A **Manitowoc** Company

Part No. _____
SCALE 1/4" = 1" DRAWN JW CHECKED _____ APP'D./DATE _____

CONTROL CONSOLE ASSEMBLY

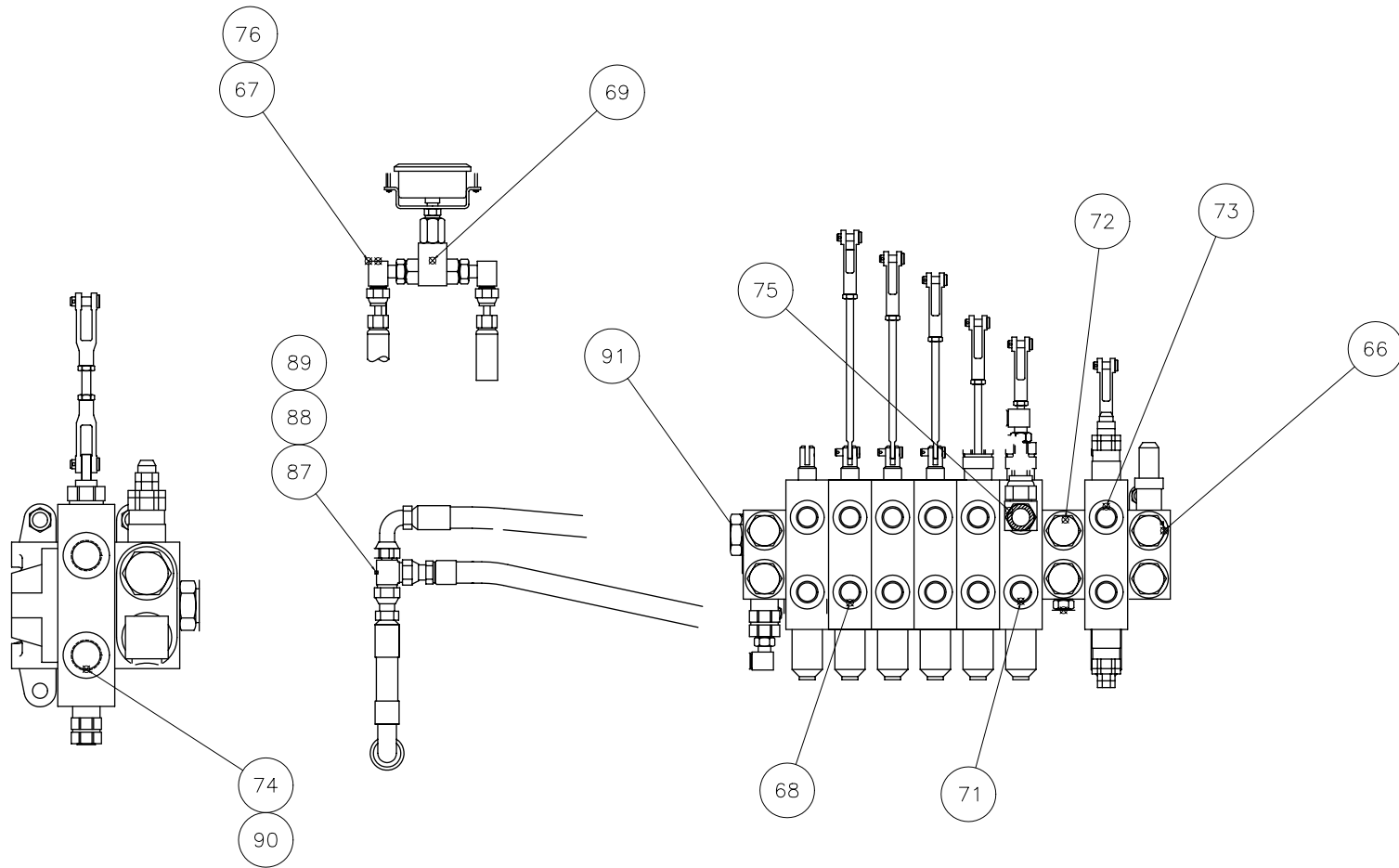
TOLERANCES (UNLESS SPECIFIED) **0257743**
SHEET 2 OF 3

THIS PRINT REMAINS THE PROPERTY OF
MANITEX INC.

ALL INFORMATION CONTAINED HEREON IS
CONFIDENTIAL. IT IS LOANED, SUBJECT TO
RETURN UPON AND ON EXPRESS CONDITION
THAT IT IS NOT TO BE COPIED OR USED
DIRECTLY OR INDIRECTLY IN ANY WAY WHAT-
SOEVER DETRIMENTAL TO OUR INTERESTS.

| TOLERANCE UNLESS OTHERWISE SPECIFIED | | |
|--------------------------------------|-------------|-----------|
| DECIMAL PLACES | FABRICATION | MACHINING |
| (1) PLACE 0.0 | ± 0.120 | ± 0.030 |
| (2) PLACE 0.00 | ± 0.060 | ± 0.015 |
| (3) PLACE 0.000 | ± 0.030 | ± 0.005 |
| ANGLES | ± 1° 30' | ± 0° 30' |

1) √ = MACHINING TOLERANCE APPLIES TO THIS DIMENSION AND/OR SURFACE.
2) √ = INDICATES A TOLERANCE OTHER THAN INDICATED BY ORIGINAL DECIMAL DIMENSION.
EXAMPLE: .375 ± .005 USE ONE DECIMAL PLACE TOLERANCE.



DOCUMENT CONTROL STATUS:
ELECTRONIC FILE = CONTROLLED
HARDCOPY = UNCONTROLLED

Manitowoc Boom Trucks, Inc.
A **MANITOWOC** COMPANY

| | | | | |
|----------|-------|-------|---------|-------------|
| Part No. | SCALE | DRAWN | CHECKED | APP'D./DATE |
| | 1/4 | JW | | |

THIS PRINT REMAINS THE PROPERTY OF MANITEX INC.
ALL INFORMATION CONTAINED THEREON IS CONFIDENTIAL. IT IS LOANED, SUBJECT TO RETURN UPON AND ON EXPRESS CONDITION THAT IT IS NOT TO BE COPIED OR USED DIRECTLY OR INDIRECTLY IN ANY WAY WHATSOEVER DETRIMENTAL TO OUR INTERESTS.

| TOLERANCE UNLESS OTHERWISE SPECIFIED | | | |
|--------------------------------------|-------------|-----------|--|
| DECIMAL PLACES | FABRICATION | MACHINING | 1) √ = MACHINING TOLERANCE APPLIES TO THIS DIMENSION AND/OR SURFACE. |
| (1) PLACE 0.0 | ± 0.120 | ± 0.030 | 2) √ INDICATES A TOLERANCE OTHER THAN INDICATED BY ORIGINAL DECIMAL DIMENSION EXAMPLE: .375 ± .001 USE ONE DECIMAL PLACE TOLERANCE. |
| (2) PLACE 0.00 | ± 0.060 | ± 0.015 | |
| (3) PLACE 0.000 | ± 0.030 | ± 0.005 | |
| ANGLES | ± 1' 30" | ± 0' 30" | |

| | |
|-------------------------------|---------|
| CONTROL CONSOLE ASSEMBLY | |
| TOLERANCES (UNLESS SPECIFIED) | 0257743 |
| SHEET | 3 OF 3 |