

BILL OF MATERIAL					REVISIONS
ITEM NO.	PART NUMBER	QTY	DESCRIPTION	UNIT WEIGHT	
1	SALES ORDER	1	SUBFRAME		EN 302464
2	5001944-001	4	CHANNEL	1.30	JW 6-28-00 NEW RELEASE
3	2753453	4	HOSE ASSY	-	AJ EN 00-0010 04 JW 10-26-00
4	0257730	1	PEDESTAL ASSEMBLY		ITEM 6 WAS QTY.12 ITEMS 7&8 WAS QTY. 24 ADDED ITEMS 25,31,32
5	5000334-001	4	CLAMPING BAR	23.0	B EN00-0011 07 JW12-16-00
6	5000342-001	4	THD./ROD .75 DIA	3.00	ADDED ITEM 33
7	3272205	8	NUT, ELASTIC .75 DIA	0.12	
8	4892200	8	WASHER, FLAT .75 DIA	0.05	
9	SALES ORDER	1	REAR STABILIZER ASSY		EN 01-0001-08 EV 1/1
10	5000994-001	2	SQUARE TUBE	39.48	CJ ADDED ITEM 34
11	2820070	4	VINYL TRIM		
12	1320130	2	CABLE CLAMP	.01	
13	33110001	6	NUT #10-24 UNC	.01	
14	4761000	6	LOCKWASHER #10	.01	
15	0751006	6	PAN HEAD #10	.01	
16	5001020-004	1	UNDERRIDE WELD.	86.21	
17	0682213	8	BOLT 0.75NC X 1.50	0.30	
18	4892200	8	FLATWASHER #0.75	0.05	
19	3272201	8	HEX NUT	0.12	
20	SALES ORDER	1	PUMP-TRIPLE		
21	4460035	2	BUTT SPLICE		
22	4460043	2	RING TERM		
23	4800116-003	1	CHASS/CAB HARNESS		
24	4460142	2	BUTT SPLICE		
25	5000342-003	16	THD. BAR 1"	5.5	
26	4000724-001	6	FRAME STIFFNER		
27	SALES ORDER	2	OUTRIGGER ASSEMBLY		
28	4300105	4	STUD		
29	3311801	4	NUT		
30	4761800	4	LOCKWASHER		
31	2011-161000	32	LOCKNUT 1"	.54	
32	2003-160000	32	FLATWASHER	.1	
33	2220983	4	STRAIGHT FITTING	.1	
34	4000724-001A	12	NUT	-	

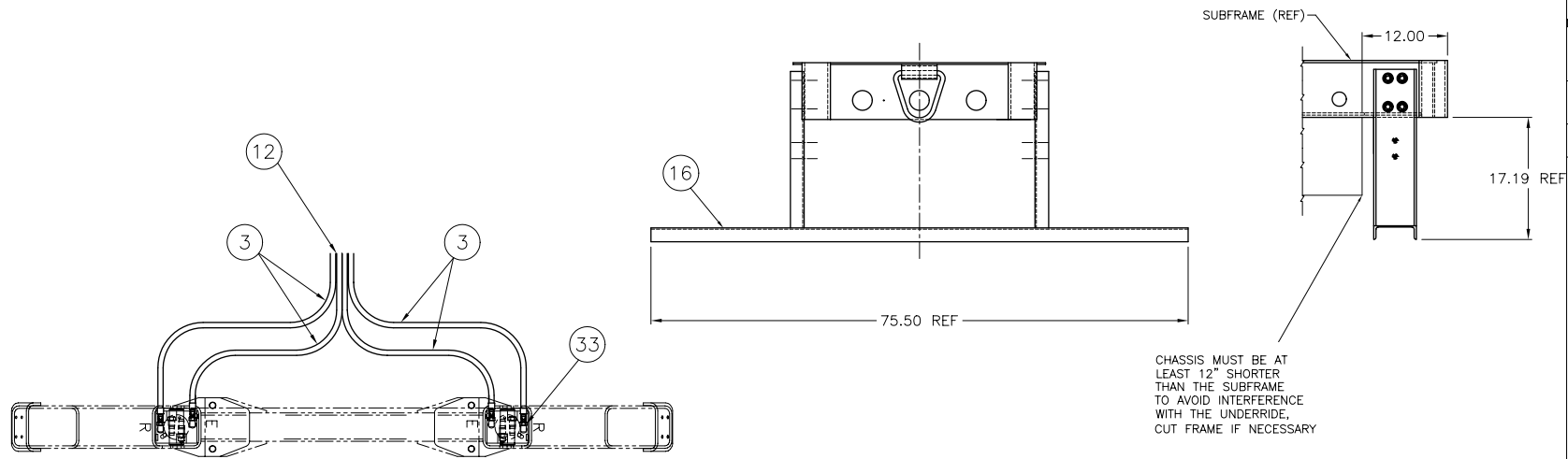
SUBFRAME INSTALLATION

SPECIFICATIONS		DIMENSIONAL TOLERANCES				
UNLESS OTHERWISE SPECIFIED		UNLESS OTHERWISE SPECIFIED				
1. TORQUE ALL ITEMS DESIGNATED WITHIN A PER USTC TORQUE SPECS SPECIFIED ON THE B.O.M.		DIMENSIONS	0 TO 24"	24" TO 32"	32" TO 300"	> 300"
2. ALL STRUCTURAL WELDING TO CONFORM TO APPLICABLE STRUCTURAL WELDING CODES.		FRACTIONAL	+/- 1/16"	+/- 1/16"	+/- 1/8"	+/- 1/4"
3. UNLESS OTHERWISE SPECIFIED, ALL DIMENSIONS ARE IN INCHES.		DECIMAL	+/- .010"	+/- .020"	+/- .125"	+/- .25"
		ANGLES	+/- 2 DEGREES			
		SURFACE FINISH SPECIFIED WITH $\sqrt{\quad}$ = 125 MICRO INCHES R _a MAX.				

THIS DOCUMENT IS STRICTLY CONFIDENTIAL AND THE SOLE PROPERTY OF			
USTC Incorporated A Raytheon Company			
76 BOWMAN ROAD - YORK, PA. 17404-9804			
DRAWN BY: J.WOOD	DATE: 6-28-00	ASSOC. DRAWING:	
SCALE:	WEIGHT:	PROJECT:	
MATERIAL:		THIRD ANGLE PROJECTION	REV. C SHEET 4 OF 4
TITLE: TRUCK PREP			EN. NO. 302464 REV. C SHEET 4 OF 4 DATE: 0257731

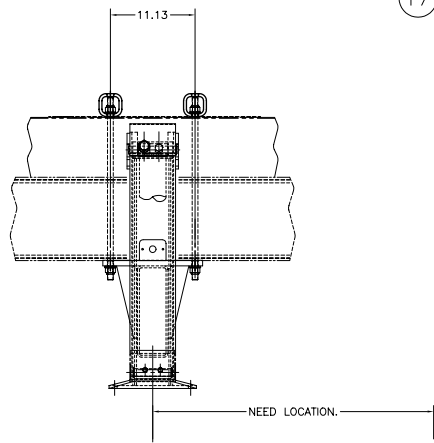
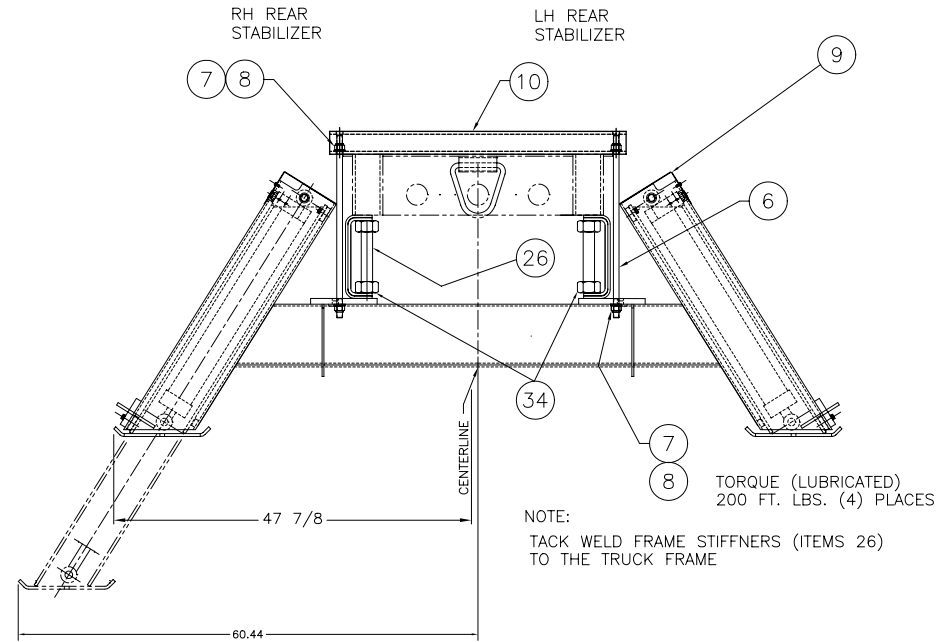
REVISIONS

EN 302464
 JW 6-28-00
 NEW RELEASE
 A
 EN 00-0010 04
 JW 10-26-00
 ITEM 6 WAS QTY. 12
 ITEMS 7&8 WAS QTY. 24
 ADDED ITEMS 25,31,32
 B
 EN00-0011 07
 JW12-16-00
 ADDED ITEM 33
 EN 01-0001-08
 EV 1/1
 C SEE SHIT 1



CHASSIS MUST BE AT LEAST 12" SHORTER THAN THE SUBFRAME TO AVOID INTERFERENCE WITH THE UNDERRIDE, CUT FRAME IF NECESSARY

TORQUE TO 280 FT-LBS



SPECIFICATIONS

- TORQUE ALL ITEMS DESIGNATED WITHIN A PER USTC TORQUE SPECS SPECIFIED ON THE B.O.M.
- ALL STRUCTURAL WELDING TO CONFORM TO APPLICABLE STRUCTURAL WELDING CODES.
- UNLESS OTHERWISE SPECIFIED, ALL DIMENSIONS ARE IN INCHES.

DIMENSIONAL TOLERANCES
 UNLESS OTHERWISE SPECIFIED

DIMENSIONS	0 TO 24"	>24" TO 72"	72" TO 300"	> 300"
FRACTIONAL	+/- 1/16"	+/- 1/16"	+/- 1/8"	+/- 1/4"
DECIMAL	+/- .010"	+/- .020"	+/- .125"	+/- .25"
ANGLES	+/- 2 DEGREES			

SURFACE FINISH SPECIFIED WITH $\sqrt{\quad}$ = 125 MICRO INCHES Ra MAX.

THIS DOCUMENT IS STRICTLY CONFIDENTIAL AND THE SOLE PROPERTY OF

USTC *unsubstantiated* A **Raytheon** Company
 76 BOWMAN ROAD - YORK, PA. 17404-9804

DRAWN BY: J. WOOD	DATE: 6-28-00	ASSOC. DRAWING
SCALE:	WEIGHT:	PROJECT:
MATERIAL:	THIRD ANGLE PROJECTION APPLIES U. S. S.	SR. NO. 302464 REV. C SHIT 4 DRAWING NUMBER 0257731
TITLE: TRUCK PREP		

REVISIONS

EN 302464
 JW 6-28-00
 NEW RELEASE
 EN 00-0010 04
 JW 10-26-00
 ITEM 6 WAS QTY:12
 ITEMS 7&8 WAS QTY: 24
 ADDED ITEMS 25,31,32
 EN00-0011 07
 JW12-16-00
 ADDED ITEM 33
 EN 01-6001-08
 BY 1/1
 C) SEE SHT 1

NOTES:

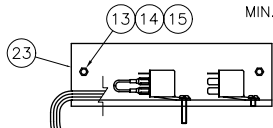
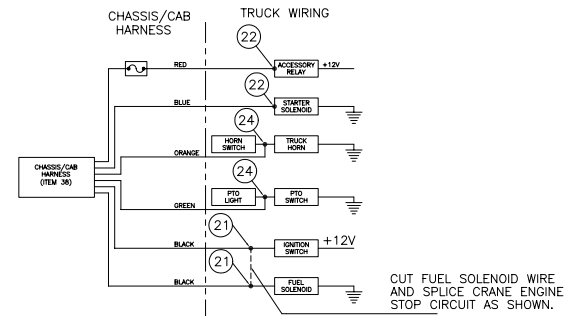
1. ROUTE THE CABLE TO THE ENGINE IN A MANNER IN WHICH IT CANNOT GET ENTANGLED IN MOVING PARTS OF THE TRUCK.

2. WIRE MUST RUN STRAIGHT BETWEEN END OF CASTING AND ATTACHMENT ENGINE THROTTLE LINKAGE. IDEALLY, THE MOTION OF THE LINKAGE BRACKET SHOULD NOT CAUSE THIS WIRE TO BEND IN ANY DIRECTION.

DO NOT LET THE CABLE SAG BELOW THE TRUCK FRAME. IT COULD GET TANGLED WITH OBJECTS BEING DRIVEN OVER.

DO NOT LET THE CABLE COME IN CONTACT WITH HOT ENGINE OR EXHAUST COMPONENTS.

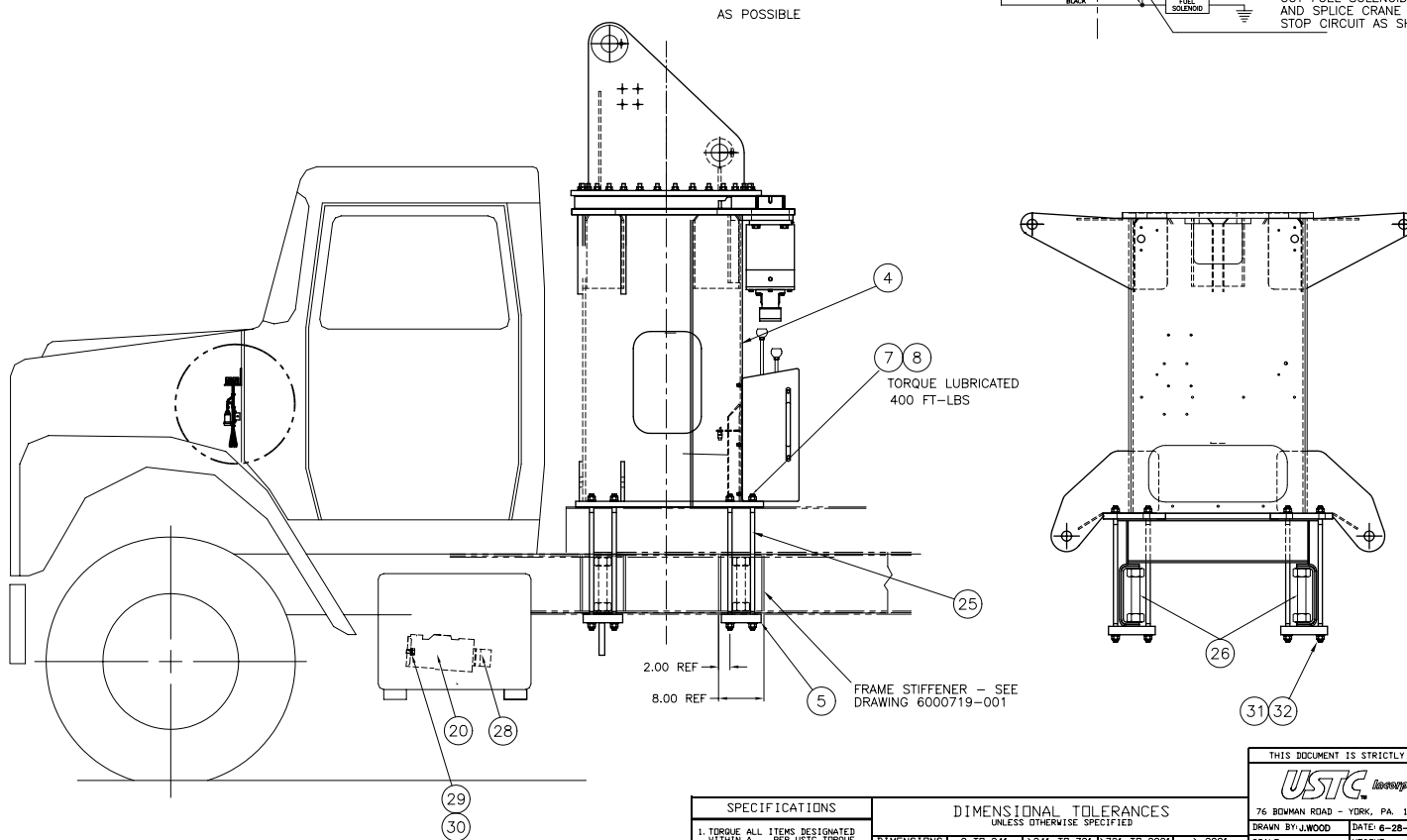
MIN. BEND RADIUS FOR CABLE IS 6.00 IN.



15 AMP ATC FUSE (REF.)

CONNECT CHASSIS/CAB HARNESS ACCORDING TO SCHEMATIC

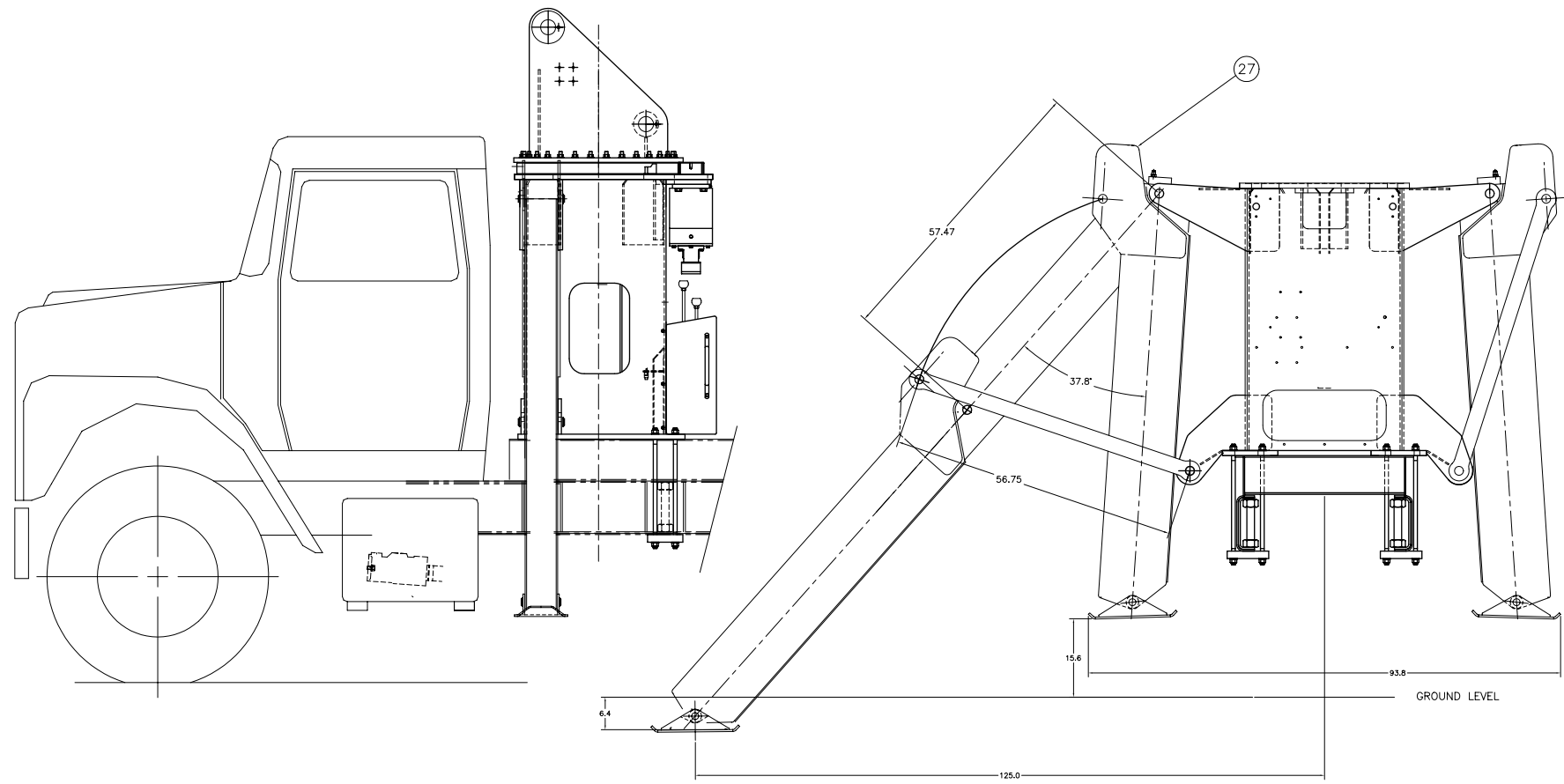
NOTE: THIS ASSEMBLY SHOWS PUMP MOUNTED ON THE TRUCK RIGHT SIDE. POSITION OF THE PUMP, PUMP ROTATION AND OUTLET WILL VARY WITH THE TRUCK MODEL, TRANSMISSION TYPE AND POWER TAKEOFF UNIT USED. SEE OWNER'S MANUAL.



SPECIFICATIONS		DIMENSIONAL TOLERANCES UNLESS OTHERWISE SPECIFIED				THIS DOCUMENT IS STRICTLY CONFIDENTIAL AND THE SOLE PROPERTY OF USTC 76 BOWMAN ROAD - YORK, PA. 17404-9804 A Amtron Company	
1. TORQUE ALL ITEMS DESIGNATED WITHIN A PER USTC TORQUE SPECS SPECIFIED ON THE B.O.M.		DIMENSIONS	0 TO 24"	>24" TO 72"	72" TO 300"	> 300"	DRAWN BY: J.WOOD
2. ALL STRUCTURAL WELDING TO CONFORM TO APPLICABLE STRUCTURAL WELDING CODES.		FRACTIONAL	+/- 1/16"	+/- 1/16"	+/- 1/8"	+/- 1/4"	DATE: 6-28-00
3. UNLESS OTHERWISE SPECIFIED, ALL DIMENSIONS ARE IN INCHES.		DECIMAL	+/- .010"	+/- .020"	+/- .125"	+/- .25"	WEIGHT:
		ANGLES	+/- 2 DEGREES				PROJECT:
		SURFACE FINISH SPECIFIED WITH $\sqrt{\quad}$ = 125 MICRO INCHES Ra MAX.				MATERIAL:	
						THIRD ANGLE PROJECTION APPLIES U. S.	
						SER. NO. 302464	
						REV. C SHT. 4 OF 4	
						DATE: 0257731	
						TITLE: TRUCK PREP	

REVISIONS

EN 302464
 JW 6-28-00
 NEW RELEASE
 EN 00-0010 04
 JW 10-26-00
 ITEM 6 WAS QTY: 12
 ITEMS 7&8 WAS QTY: 24
 ADDED ITEMS 25,31,32
 EN00-0011 07
 JW12-16-00
 ADDED ITEM 33
 EN 01-0001-08
 EV 1/1
 C) SEE SHT 1



THIS DOCUMENT IS STRICTLY CONFIDENTIAL AND THE SOLE PROPERTY OF

USTC *transport* A *Raytheon* Company
 76 BOWMAN ROAD - YORK, PA. 17404-9804

DRAWN BY: J.WOOD DATE: 6-28-00 ASSOC. DRAWING
 SCALE: WEIGHT: PROJECT:
 MATERIAL: THIRD ANGLE PROJECTION
 APPLIES U. S. S. REV. C | SHT. 4
 0257731

TITLE: TRUCK PREP

SPECIFICATIONS	DIMENSIONAL TOLERANCES				
	UNLESS OTHERWISE SPECIFIED				
1. TORQUE ALL ITEMS DESIGNATED WITHIN A PER USTC TORQUE SPECS SPECIFIED ON THE B. I. M.	DIMENSIONS	0 TO 24"	>24" TO 72"	72" TO 300"	> 300"
2. ALL STRUCTURAL WELDING TO CONFORM TO APPLICABLE STRUCTURAL WELDING CODES.	FRACTIONAL	+/- 1/16"	+/- 1/16"	+/- 1/8"	+/- 1/4"
3. UNLESS OTHERWISE SPECIFIED, ALL DIMENSIONS ARE IN INCHES.	DECIMAL	+/- .010"	+/- .020"	+/- .125"	+/- .25"
	ANGLES	+/- 2 DEGREES			
	SURFACE FINISH SPECIFIED WITH $\sqrt{\quad}$ = 125 MICRO INCHES R _a MAX.				