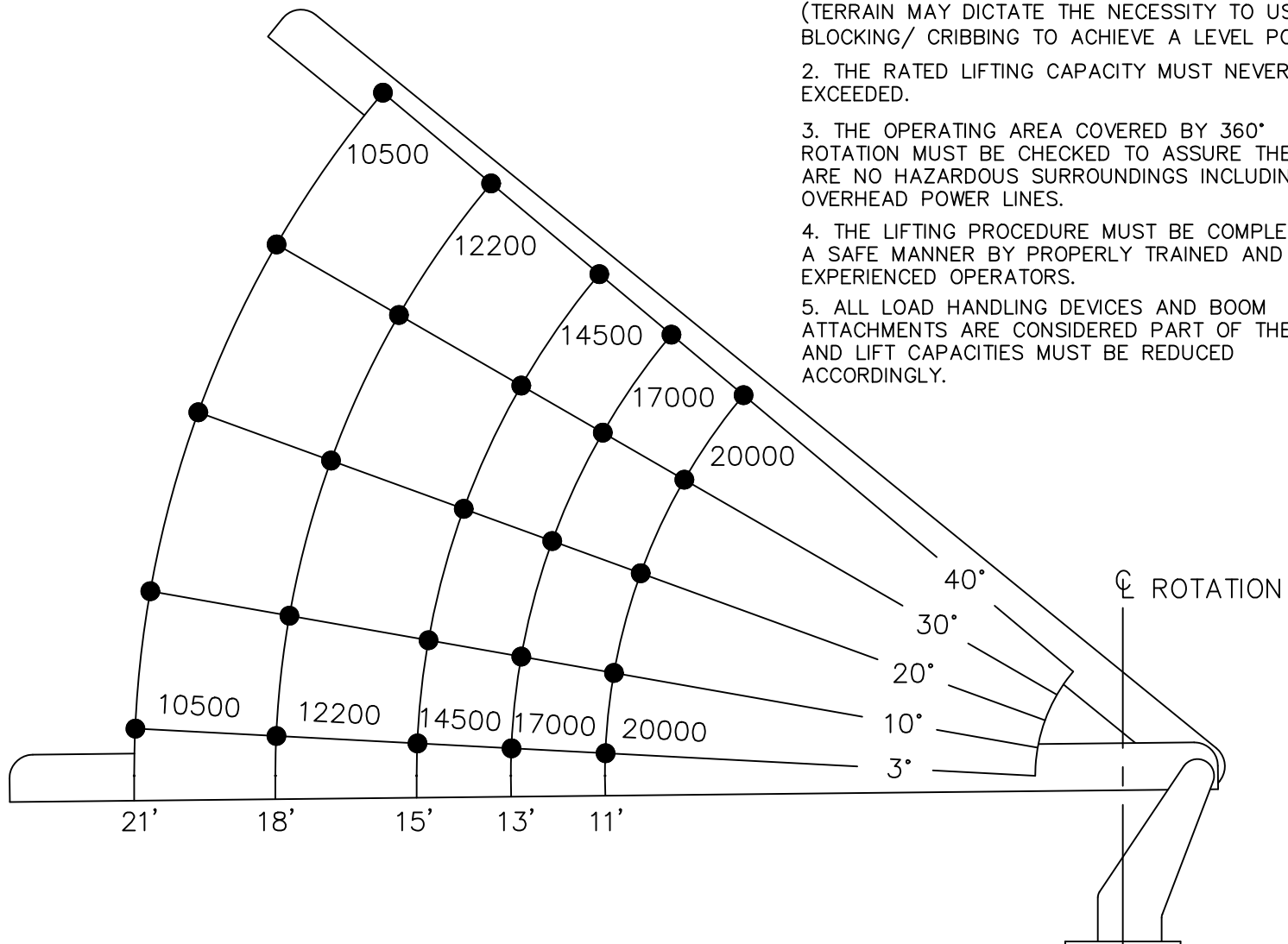


CAPACITY CHART AND RANGE DIAGRAM USTC MODEL PC-20 GEORGETOWN, TX 78626

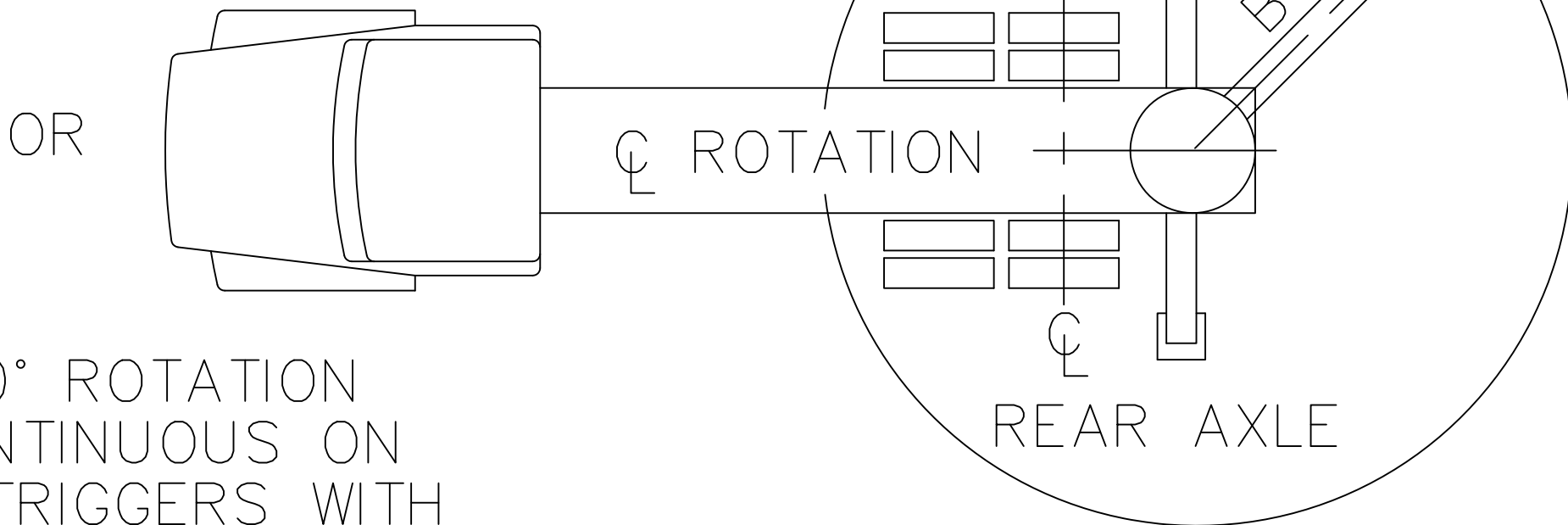
CAPACITY CHART NOTES

1. THE MACHINE MUST BE LEVEL WITH OUTRIGGERS OR STABILIZERS FULLY EXTENDED AND THE PADS PROPERLY SET ON A FIRM SURFACE.
(TERRAIN MAY DICTATE THE NECESSITY TO USE BLOCKING/ CRIBBING TO ACHIEVE A LEVEL POSITION)
2. THE RATED LIFTING CAPACITY MUST NEVER BE EXCEEDED.
3. THE OPERATING AREA COVERED BY 360° ROTATION MUST BE CHECKED TO ASSURE THERE ARE NO HAZARDOUS SURROUNDINGS INCLUDING OVERHEAD POWER LINES.
4. THE LIFTING PROCEDURE MUST BE COMPLETED IN A SAFE MANNER BY PROPERLY TRAINED AND EXPERIENCED OPERATORS.
5. ALL LOAD HANDLING DEVICES AND BOOM ATTACHMENTS ARE CONSIDERED PART OF THE LOAD AND LIFT CAPACITIES MUST BE REDUCED ACCORDINGLY.



SWING IS APPROX.
375° ROTATION
NON-CONTINUOUS
ON OUTRIGGERS WITH
ROTATION LIMITER

AREAS OF OPERATION



360° ROTATION
CONTINUOUS ON
OUTRIGGERS WITH
SWIVEL COUPLING